



PARTS LIST FOR

***CAW-2004-OME1***

***CAW-2004-OME3***

***CAW-3004-OME1***

***CAW-3004-OME3***

COLD WATER WALL MOUNT PRESSURE WASHER

Motor Horsepower:

CAW-2004: 6.0 H.P.

CAW-3004: 8.0 H.P.

Pump Oil Grade: SAE30W Non-Detergent

Pump Oil Capacity: 15 oz.

Nozzle Size:

CAW-2004: 5.5

CAW-3004: 4.5

This Parts Listing has been compiled for your benefit. You can be assured your new Cold Water Pressure Washer was constructed and designed with quality and performance in mind using over 25 years experience in the pressure washer business. Each component has been rigorously tested to insure the highest level of acceptance.

The contents of this Parts Listing are based on the latest product information available at the time of publication. The manufacturer reserves the right to make changes in price, color, materials, equipment, specifications or models at any time without notice.

### **WARNING**

THIS IS A PROFESSIONAL HIGH PRESSURE, COLD WATER PRESSURE WASHER. CAUTION SHOULD BE OBSERVED WHEN USING OR REPAIRING THIS UNIT! READ AND FOLLOW THE SAFETY WARNINGS LISTED BELOW BEFORE ATTEMPTING ANY REPAIRS ON THIS PRESSURE WASHER!

### **SAFETY WARNINGS**

1. NEVER alter or modify the equipment. Be sure any accessory items and system components being used will withstand the pressure developed. Use only genuine manufactured parts for repair of your pressure washer. Failure to do so can cause hazardous operating conditions and will VOID warranty.
2. Know how to stop and bleed pressures quickly. Be thoroughly familiar with controls.
3. Before servicing the unit, turn unit off, relieve the water pressure and allow the unit to cool down. Do not make repairs while the unit is running. Service in a clean, dry, flat area. Block the wheels to prevent the unit from moving. Be especially careful to properly dispose of any flammable materials.
4. After testing the machine, DO NOT leave the pressurized unit unattended. Shut off the unit and release trapped pressure before leaving.

## Table of Contents

SPECIFICATIONS.....	3
FRAME ASSEMBLY FOR 2004 AND 3004 SINGLE PHASE .....	4
FRAME ASSEMBLY FOR 2004 AND 3004 THREE PHASE .....	6
ELECTRIC BOX ASSEMBLY .....	8
PUMP ASSEMBLY (3-0440) .....	10
UNLOADER ASSEMBLY (8-0633) .....	12
WIRING SCHEMATIC SINGLE PHASE .....	14
WIRING DIAGRAM SINGLE PHASE .....	15
WIRING SCHEMATIC THREE PHASE .....	16
WIRING DIAGRAM THREE PHASE .....	17
WIRING SCHEMATIC SINGLE PHASE - AUTO - START/STOP .....	18
WIRING DIAGRAM SINGLE PHASE - AUTO - START/STOP .....	19
WIRING SCHEMATIC THREE PHASE - AUTO - START/STOP.....	20
WIRING DIAGRAM THREE PHASE - AUTO - START/STOP.....	21
WIRING SCHEMATIC SINGLE PHASE - REMOTE BOX.....	22
WIRING DIAGRAM SINGLE PHASE - REMOTE BOX.....	23
WIRING SCHEMATIC THREE PHASE - REMOTE BOX.....	24
WIRING DIAGRAM THREE PHASE - REMOTE BOX.....	25
WIRING SCHEMATIC SINGLE PHASE - MULTI REMOTE BOX.....	26
WIRING DIAGRAM SINGLE PHASE - MULTI REMOTE BOX.....	27
WIRING SCHEMATIC THREE PHASE - MULTI REMOTE BOX .....	28
WIRING DIAGRAM THREE PHASE - MULTI REMOTE BOX .....	29
WIRING SCHEMATIC SINGLE PHASE - AUTO START/STOP, REMOTE BOX.....	30
WIRING DIAGRAM SINGLE PHASE - AUTO START/STOP, REMOTE BOX.....	31
WIRING SCHEMATIC THREE PHASE - AUTO START/STOP, REMOTE BOX.....	32
WIRING DIAGRAM THREE PHASE - AUTO START/STOP, REMOTE BOX.....	33
WIRING SCHEMATIC SINGLE PHASE - AUTO START/STOP, MULTI REMOTE BOX.....	34
WIRING DIAGRAM SINGLE PHASE - AUTO START/STOP, MULTI REMOTE BOX.....	35
WIRING SCHEMATIC THREE PHASE - AUTO START/STOP, MULTI REMOTE BOX .....	36
WIRING DIAGRAM THREE PHASE - AUTO START/STOP, MULTI REMOTE BOX .....	37

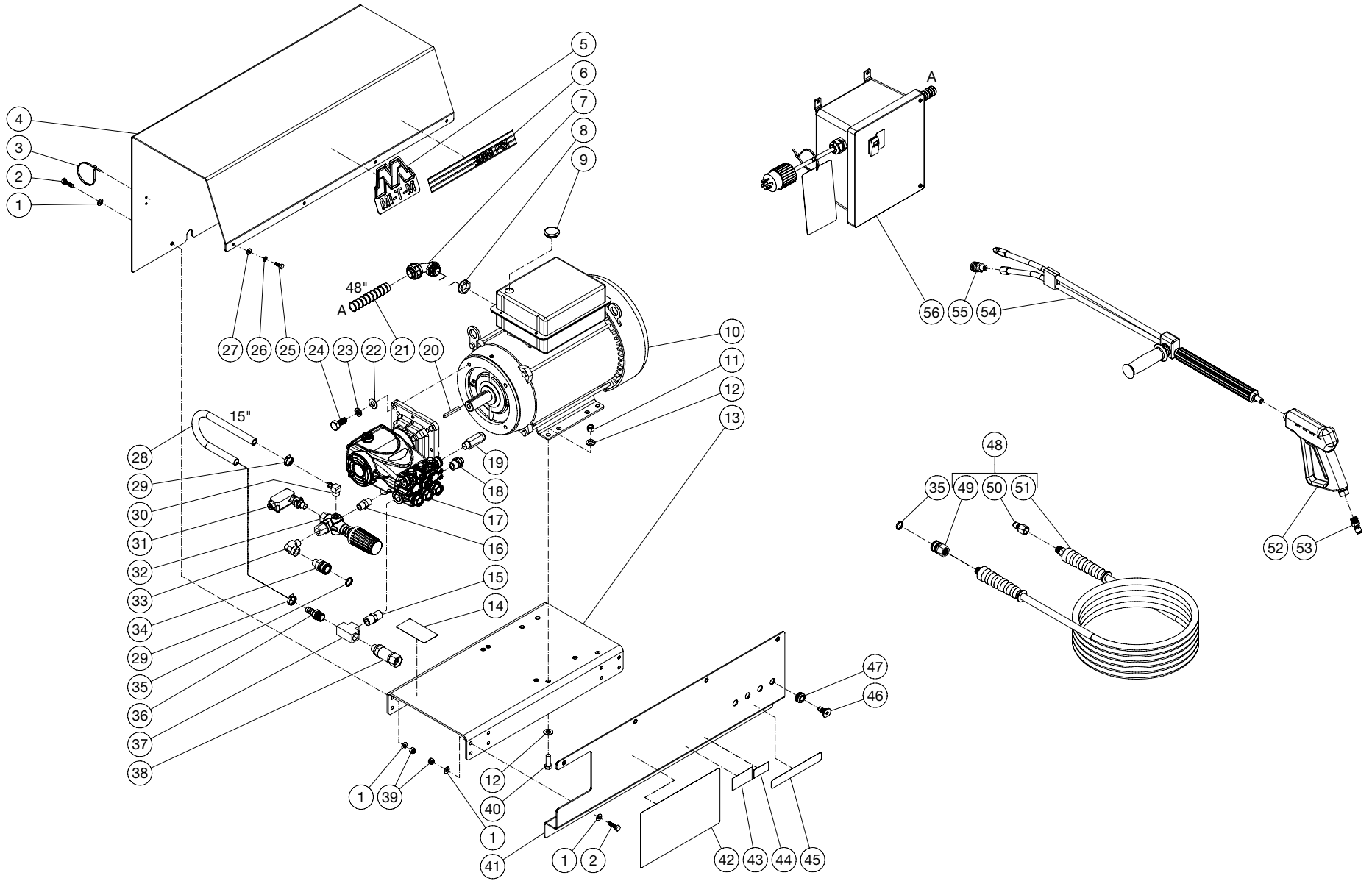
## SPECIFICATIONS

MODEL	CAW-2004-0ME1	CAW-2004-0ME3	CAW-3004-0ME1	CAW-3004-0ME3
Operating Pressure (PSI/Bar):	2000/137.9		3000/206.9	
High Pressure Nozzle:	5.5		4.5	
Water Volume (GPM/lpm):	3.9/14.8			
Motor:	Totally enclosed fan cooled, circuit breaker thermal overload protection, 4ft. power supply cord with Ground Fault Circuit Interrupter (GFCI)			
Horsepower	6.0		8.0	
Voltage	230			
Phase	Single	Three	Single	Three
Amps	24.5	16.4	34.5	22.8
Pump:	Direct Driven, Oil Bath, Triplex Piston			
Oil Type	SAE30W Non-Detergent			
Oil Capacity (oz./liters)	15.0/0.44			
Plungers	Ceramic			
Manifold	Forged Brass			
Valves	Stainless Steel			
Unloader	Adjustable			
Thermal Relief Valve	Relieves heated water during unloader bypass stage			
Detergent Injector	Adjustable low pressure down stream from pump			
Unit Net Weight (lbs/Kg)	190/86.2	165/74.8	210/95.3	195/88.5
Unit Shipping Weight (lbs/Kg)	245 / 111.2	225/102.1	270/122.5	255/115.7
Unit Net Dimension (in/cm)	31.0L X 17.25W X 18.0H/78.74L X 43.82W X 45.72H			
Unit Shipping Dimension (in/cm)	40.50L X 26.0W X 36.0H/102.87L X 66.04W X 91.44H			

---

**NOTES**

# FRAME ASSEMBLY FOR 2004 AND 3004 SINGLE PHASE



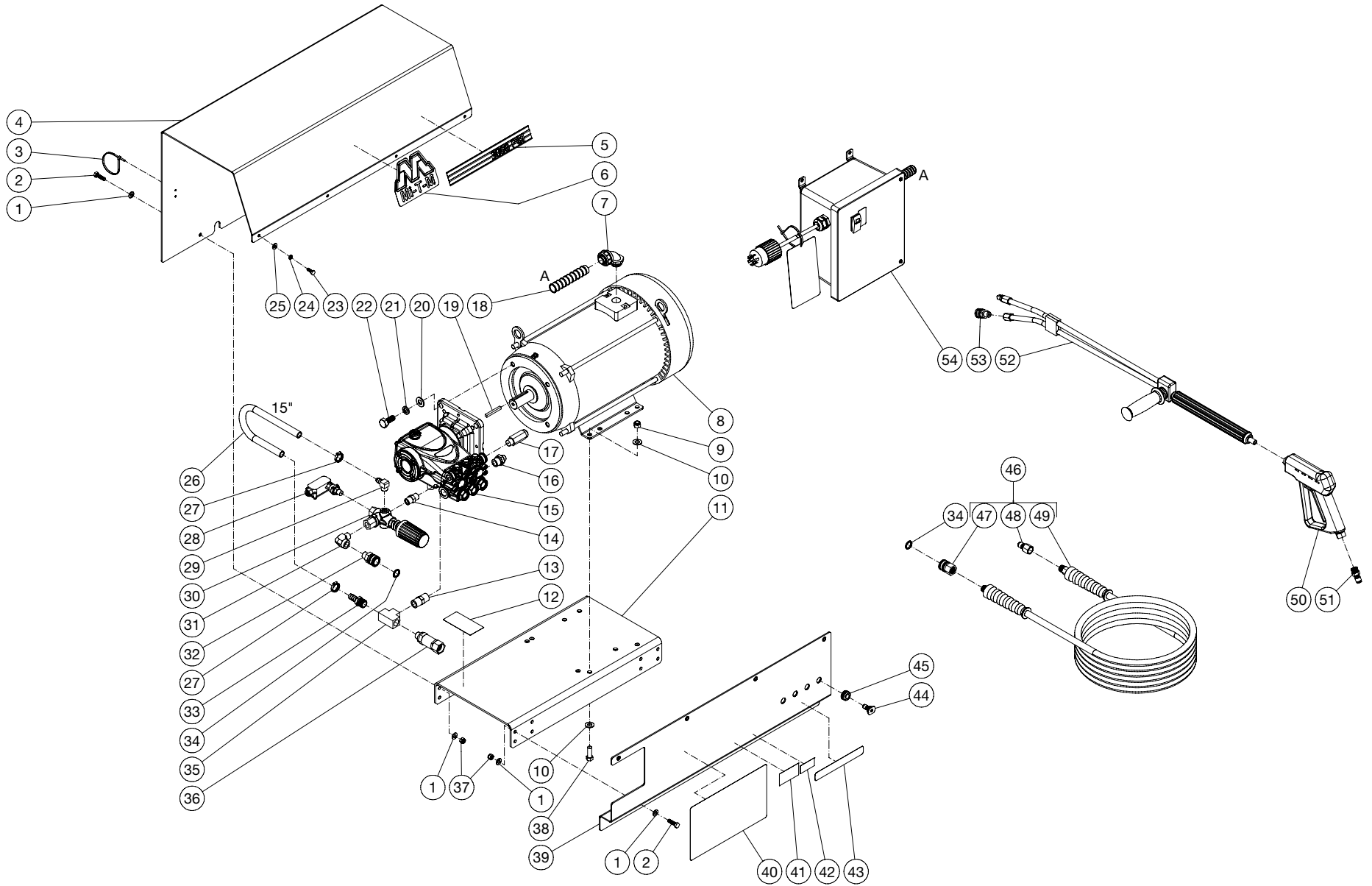
CAW-2004\_3004-0ME1 101719 JJR

## FRAME ASSEMBLY

ITEM	TITLE	PART#	QTY	ITEM	TITLE	PART#	QTY
1	WASHER	28-0003	12	32	UNLOADER	8-0633	1
2	BOLT	27-0068	6	33	ELBOW	24-0105	1
3	CABLE TIE	33-0022	3	34	QUICK CONNECT SOCKET	17-0007	1
4	HOOD	56-0097	1	35	O-RING	25-0123	2
5	DECAL - Mi-T-M (SEE 71-1069)	N/A	1	36	BARB	23-0045	1
6	DECAL - 12" STRIPE (3004) (SEE 71-1069)	N/A	1	37	TEE	23-0043	1
-	DECAL - 12" STRIPE (2004) (SEE 71-1069)	N/A	1	38	FILTER	19-0206	1
7	CONDUIT ELBOW	32-0487	1	39	LOCKNUT	30-0157	6
8	ELECTRICAL LOCKNUT	32-0292	1	40	BOLT	27-0167	4
9	HOLE SEAL	32-0815	1	41	PANEL	56-0089	1
10	MOTOR (3004)	2-0115	1	42	DECAL - WARNING (SEE 71-1069)	N/A	1
-	MOTOR (2004)	2-0114	1	43	DECAL- MOBILE PRO	34-3850	1
11	LOCKNUT	30-0161	4	44	DECAL - MADE IN USA	34-3553	1
12	WASHER	28-0005	8	45	DECAL - NOZZLE (SEE 71-1069)	N/A	1
13	BASEPLATE	5-0382	1	46	NOZZLE (3004)	18-0405	1
14	DECAL- SILVER STICKER	N/A	1	-	NOZZLE (3004)	18-0402	1
15	NIPPLE	23-0012	1	-	NOZZLE (3004)	18-0403	1
16	NIPPLE	24-0010	1	-	NOZZLE (3004)	18-0404	1
17	PUMP	3-0440	1	-	NOZZLE (2004)	18-0410	1
18	RELIEF VALVE	22-0371	1	-	NOZZLE (2004)	18-0413	1
19	SAFETY VALVE	22-0376	1	-	NOZZLE (2004)	18-0412	1
20	KEY	43-0078	1	-	NOZZLE (2004)	18-0411	1
21	CONDUIT FLEX *(FOUR FEET REQUIRED)	32-0486	1	47	GROMMET	33-0001	4
22	WASHER	28-0006	4	48	HOSE ASSEMBLY	851-0338	1
23	LOCKWASHER	29-0010	4	49	QC SOCKET	17-0004	1
24	BOLT	27-0217	4	50	QUICK CONNECT	17-0006	1
25	BOLT	27-0015	4	51	HOSE	15-0209	1
26	LOCKWASHER	29-0006	4	52	GUN	16-0001	1
27	WASHER	28-0002	4	53	QUICK CONNECT	17-0074	1
28	HOSE *(TWO FEET REQUIRED)	15-0007	1	54	DUAL LANCE	16-0416	1
29	HOSE CLAMP	42-0011	2	55	QC SOCKET	17-0028	1
30	ELBOW	23-0050	1	56	ELECT BOX ASSY	N/A	1
31	PRESSURE SWITCH	22-0171	1	-	DECAL SET	71-1069	1

\*MUST ORDER IN ONE FOOT LENGTHS

# FRAME ASSEMBLY FOR 2004 AND 3004 THREE PHASE



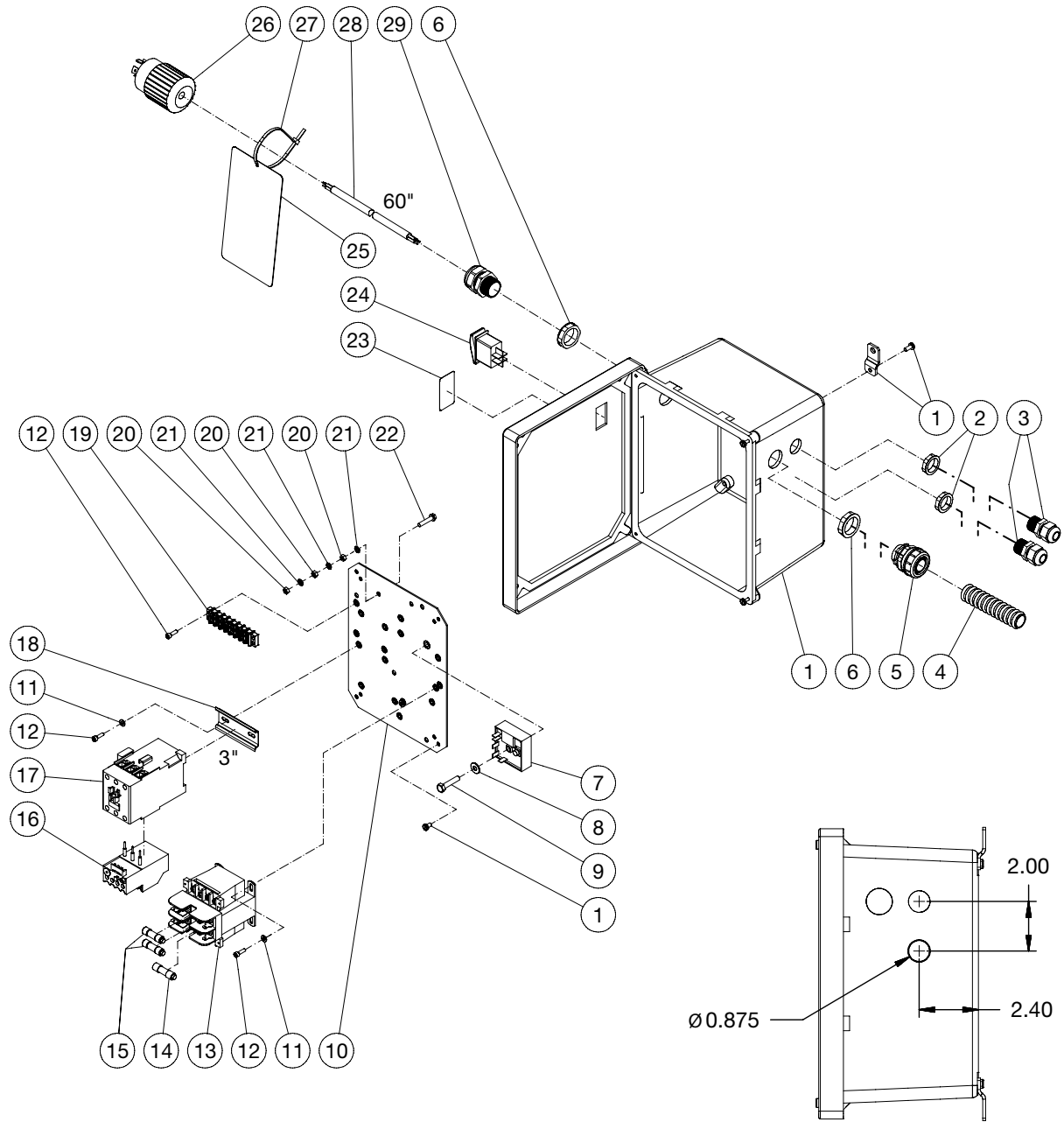
CAW-2004\_3004-0ME3 101719 JJR



FRAME ASSEMBLY							
ITEM	TITLE	PART#	QTY	ITEM	TITLE	PART#	QTY
1	WASHER	28-0003	12	31	ELBOW	24-0105	1
2	BOLT	27-0068	6	32	QUICK CONNECT SOCKET	17-0007	1
3	CABLE TIE	33-0022	3	33	BARB	23-0045	1
4	HOOD	56-0097	1	34	O-RING	25-0123	2
5	DECAL - 12" STRIPE (SEE 71-1069)	N/A	1	35	TEE	23-0043	1
6	DECAL - Mi-T-M (SEE 71-1069)	N/A	1	36	FILTER	19-0206	1
7	CONDUIT ELBOW	32-0487	1	37	LOCKNUT	30-0157	6
8	MOTOR (3004)	2-0117	1	38	BOLT	27-0167	4
-	MOTOR (2004)	2-0116	1	39	PANEL	56-0089	1
9	LOCKNUT	30-0161	4	40	DECAL - WARNING (SEE 71-1069)	N/A	1
10	WASHER	28-0005	8	41	DECAL - MOBILE PRO	34-3850	1
11	BASEPLATE	5-0382	1	42	DECAL - MADE IN USA	34-3553	1
12	DECAL - SILVER STICKER	N/A	1	43	DECAL - NOZZLE (SEE 71-1069)	N/A	1
13	NIPPLE	23-0012	1	44	NOZZLE (3004)	18-0402	1
14	NIPPLE	24-0010	1	-	NOZZLE (3004)	18-0403	1
15	PUMP	3-0440	1	-	NOZZLE (3004)	18-0404	1
16	RELIEF VALVE	22-0371	1	-	NOZZLE (3004)	18-0405	1
17	SAFETY VALVE	22-0376	1	-	NOZZLE (2004)	18-0410	1
18	CONDUIT FLEX *(SIX FEET REQUIRED) (3004)	32-0486	1	-	NOZZLE (2004)	18-0411	1
-	CONDUIT FLEX *(FIVE FEET REQUIRED) (2004)	32-0486	1	-	NOZZLE (2004)	18-0412	1
19	KEY	43-0078	1	-	NOZZLE (2004)	18-0413	1
20	WASHER	28-0006	4	45	GROMMET	33-0001	4
21	LOCKWASHER	29-0010	4	46	HOSE ASSEMBLY	851-0338	1
22	BOLT	27-0217	4	47	QC SOCKET	17-0004	1
23	BOLT	27-0015	4	48	QUICK CONNECT	17-0006	1
24	LOCKWASHER	29-0006	4	49	HOSE	15-0209	1
25	WASHER	28-0002	4	50	GUN	16-0001	1
26	HOSE *(TWO FEET REQUIRED)	15-0007	1	51	QUICK CONNECT	17-0074	1
27	HOSE CLAMP	42-0011	2	52	DUAL LANCE	16-0416	1
28	PRESSURE SWITCH	22-0171	1	53	QC SOCKET	17-0028	1
29	ELBOW	23-0050	1	54	ELECT BOX ASSY	N/A	1
30	UNLOADER	8-0633	1	-	DECAL SET	71-1069	1

\*MUST ORDER IN ONE FOOT LENGTHS

# ELECTRIC BOX ASSEMBLY



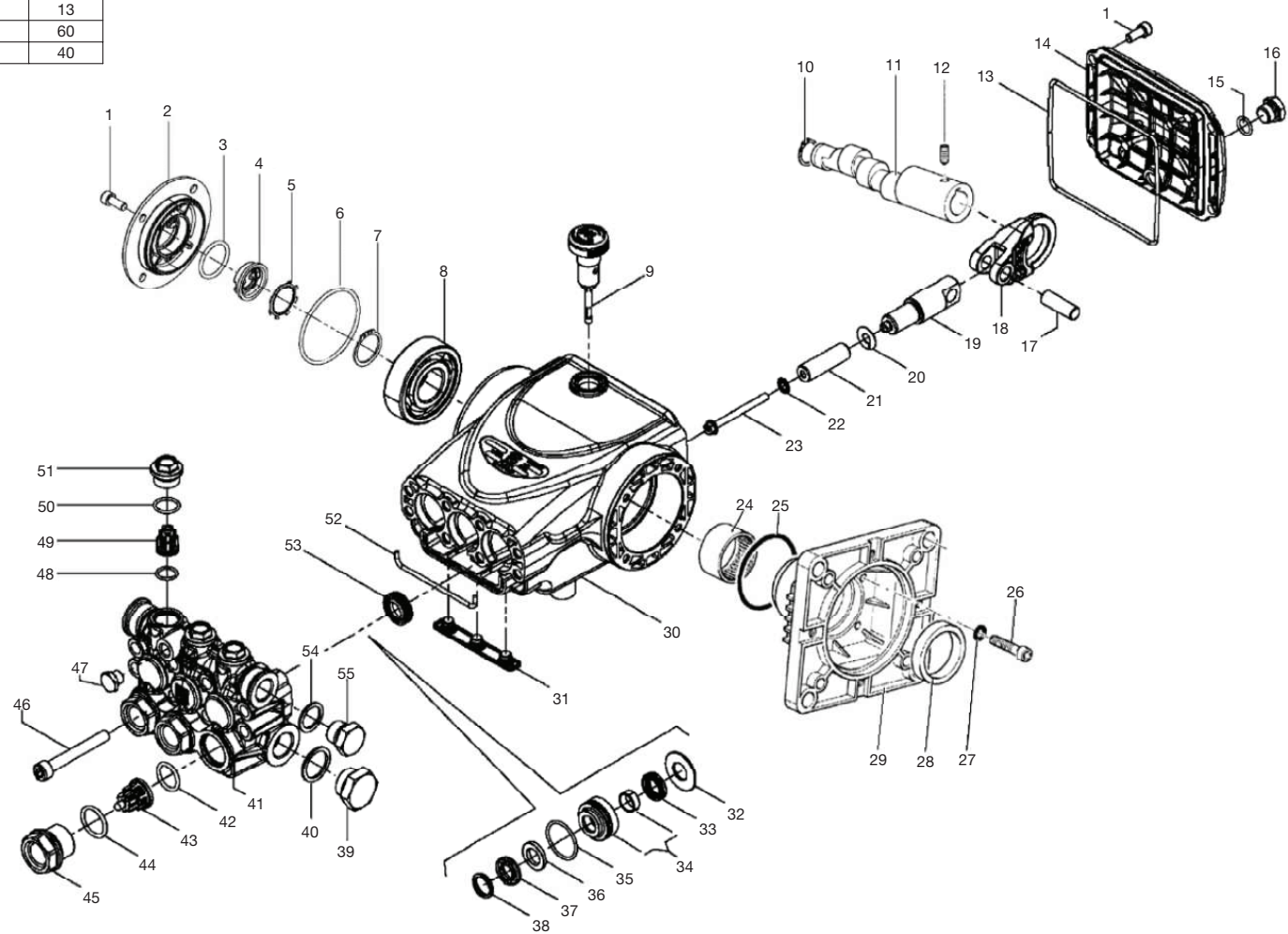
GC 1PH\_3PH E-BOX ASSY 6\_8 HP 102819 JJR

FRAME ASSEMBLY			
ITEM	DESCRIPTION	PART #	QTY
1	ELECTRIC BOX	32-1266	1
2	ELECTRICAL LOCKNUT	32-0108	2
3	STRAIN RELIEF	32-0437	2
4	CONDUIT *(SIX FEET REQUIRED) (3004-0MEW3R)	32-0486	1
5	CONDUIT STRAIGHT	32-0488	1
6	ELECTRICAL LOCKNUT	32-0292	2
7	TIMER SWITCH	32-0800	1
8	WASHER	28-0002	1
9	BOLT	27-0017	1
10	CONTROL PANEL	20-0723A06	1
11	WASHER	28-0010	4
12	SCREW	27-8835	6
13	TRANSFORMER	32-0313	1
14	FUSE	32-1084	1
15	FUSE	32-0467	2
16	OVERLOAD RELAY (3004-0MEW3R)	32-1076	1
-	OVERLOAD RELAY (2004-0MEW3R)	32-1159	1
17	CONTACTOR - 30AMP (3004-0MEW3R)	32-0597	1
-	CONTACTOR - 40AMP (3004-0MEW1R)	32-0811	1
-	CONTACTOR - 24AMP (2004-0MEW3R)	32-0329	1
-	CONTACTOR - (2004-0MEW1R)	32-0563	1
18	DIN RAIL *(ONE FOOT REQUIRED)	32-0316	1
19	TERMINAL STRIP	32-0436	1
20	NUT	30-6001	3
21	STAR WASHER	28-1009	3
22	BOLT	27-8807	1
23	DECAL - ON/OFF (SEE 71-1069)	N/A	1
24	ROCKER SWITCH	32-0731	1
25	TAG - WARNING RISK OF ELECTROCUTION	34-1035	1
26	PLUG (3004-0MEW3R) (3004-0MEW3R)	32-0037	1
-	PLUG (2004-0MEW3R) (2004-0MEW3R)	32-0118	1
27	CABLE TIE	33-0022	1
28	CORD *(FIVE FEET REQUIRED) (3004-0MEW3R)	32-0023	1
-	CORD (3004-0MEW1R)	32-1223	1
-	CORD *(FIVE FEET REQUIRED) (2004-0MEW3R)	32-0025	1
-	CORD (2004-0MEW1R)	32-0334	1
29	CORD RELIEF	9-0046	1
-	CORD RELIEF *(FIVE FEET REQUIRED) (2004-0MEW3R)	32-0486	1
-	CORD RELIEF *(FOUR FEET REQUIRED) (3004-0MEW1R)	32-0486	1
-	CORD RELIEF *(FOUR FEET REQUIRED) 2004-0MEW1R	32-0486	1

\*MUST ORDER IN ONE FOOT LENGTHS

# PUMP ASSEMBLY (3-0440)

TORQUE SPEC.		
POSITION	FT-LBS	NM
1	7.4	10
16	14.8	20
23	4.5	6
26	7.4	10
39	30	40
45	96	130
46	14.8	20
47	9.6	13
51	44.3	60
55	30	40



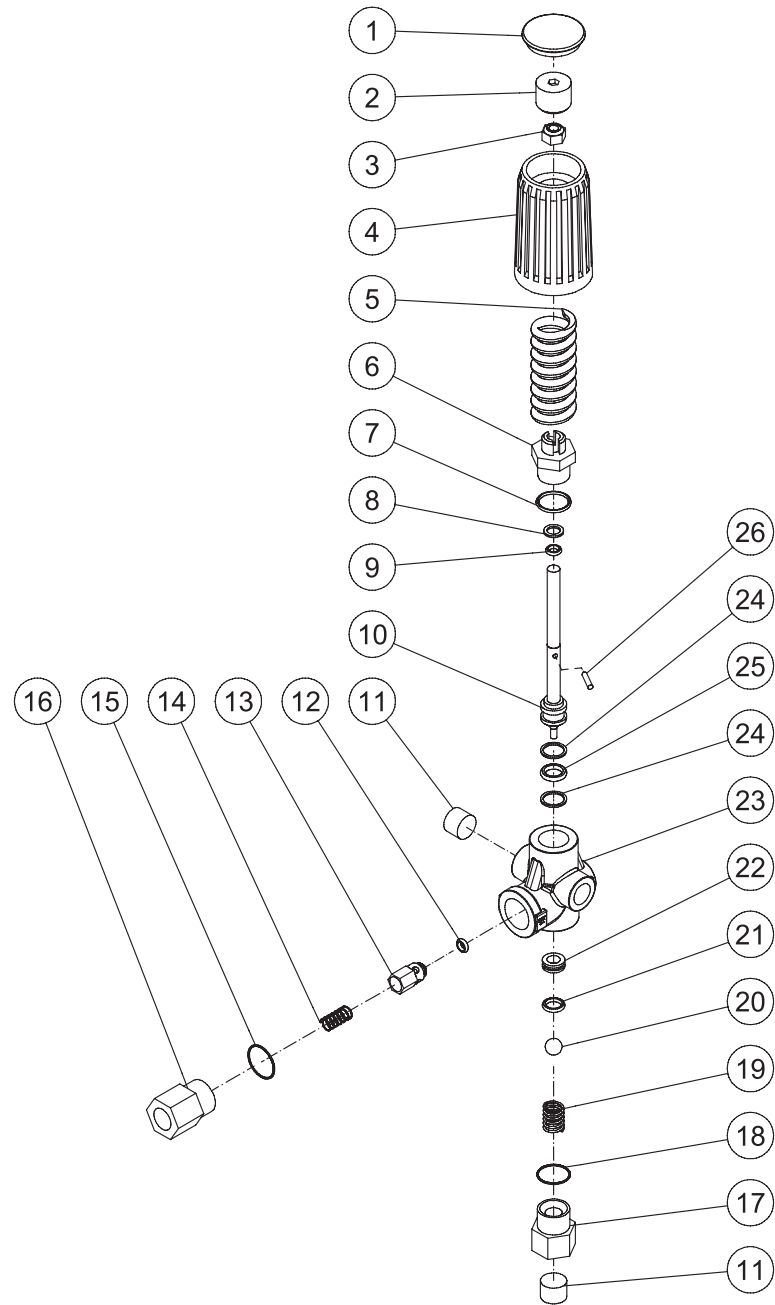
## PUMP ASSEMBLY

ITEM	DESCRIPTION	PART #	QTY	ITEM	DESCRIPTION	PART #	QTY
1	BOLT	27-8401	12	29	FLANGE	N/A	1
2	CRANKCASE COVER	46-1724	1	30	CRANKCASE	46-1733	1
3	O-RING	25-0400	1	31	DRIP COVER	46-1734	1
4	OIL LEVEL INDICATOR	46-1725	1	32	BUSHING (SEE KIT 70-0697)	SEE KIT	3
5	STOP RING	46-1726	1	33	OIL SEAL (SEE KIT 70-0697 AND 70-0696)	SEE KIT	3
6	O-RING	25-0158	1	34	PRESSURE SEAL (SEE KIT 70-0697)	SEE KIT	3
7	SNAP RING	46-0104	1	35	O-RING (SEE KIT 70-0697 AND 70-0696)	SEE KIT	3
8	BEARING	48-0093	1	36	HEAD RING (SEE KIT 70-0697 AND 70-0696)	SEE KIT	3
9	OIL DIP STICK	46-1727	1	37	V-PACKING SUPPORT (SEE KIT 70-0697 AND 70-0696)	SEE KIT	3
10	CIRCLIP	46-0104	1	38	HEAD RING (SEE KIT 70-0697 AND 70-0696)	SEE KIT	3
11	CRANKSHAFT	46-1728	1	39	PLUG	39-0019	1
12	BOLT	27-8886	1	40	WASHER	28-1038	1
13	O-RING	25-0713	1	41	MANIFOLD	N/A	1
14	CRANKCASE COVER	46-1729	1	42	O-RING (SEE KIT 70-0693)	SEE KIT	3
15	O-RING	25-0210	1	43	VALVE (SEE KIT 70-0693)	SEE KIT	3
16	PLUG	39-0017	1	44	O-RING (SEE KIT 70-0694)	SEE KIT	3
17	CONNECTING ROD PIN	43-0079	3	45	VALVE PLUG (SEE KIT 70-0694)	SEE KIT	3
18	CONNECTING ROD	46-1730	3	46	BOLT	27-8439	8
19	PISTON GUIDE	46-1731	3	47	PLUG	39-0032	1
20	WASHER	28-0070	3	48	O-RING (SEE KIT 70-0693)	SEE KIT	3
21	PLUNGER	46-1732	3	49	VALVE (SEE KIT 70-0693)	SEE KIT	1
22	WASHER	28-0071	3	50	O-RING (SEE KIT 70-0694)	SEE KIT	3
23	BOLT	27-0907	3	51	VALVE PLUG (SEE KIT 70-0694)	SEE KIT	3
24	BEARING	48-0040	1	52	GASKET	26-0416	1
25	O-RING	25-0060	1	53	OIL SEAL (SEE KIT 70-0695)	SEE KIT	3
26	BOLT	27-8404	4	54	WASHER	28-1002	1
27	WASHER	28-0072	4	55	PLUG	39-0018	1
28	OIL SEAL	26-0415	1				

## REPLACEMENT KITS

KIT#	DESCRIPTION	ITEMS	# OF ASSEMBLIES	# OF CYLINDERS
70-0693	VALVES	42, 43, 48, 49	6	3
70-0694	VALVE PLUG	44, 45, 50, 51	3	3
70-0695	OIL SEALS	53	3	3
70-0696	PACKING SEALS	33, 35, 36, 37, 38	3	3
70-0697	PACKING WITH BRASS SEALS	32, 33, 34, 35, 36, 37, 38	1	1

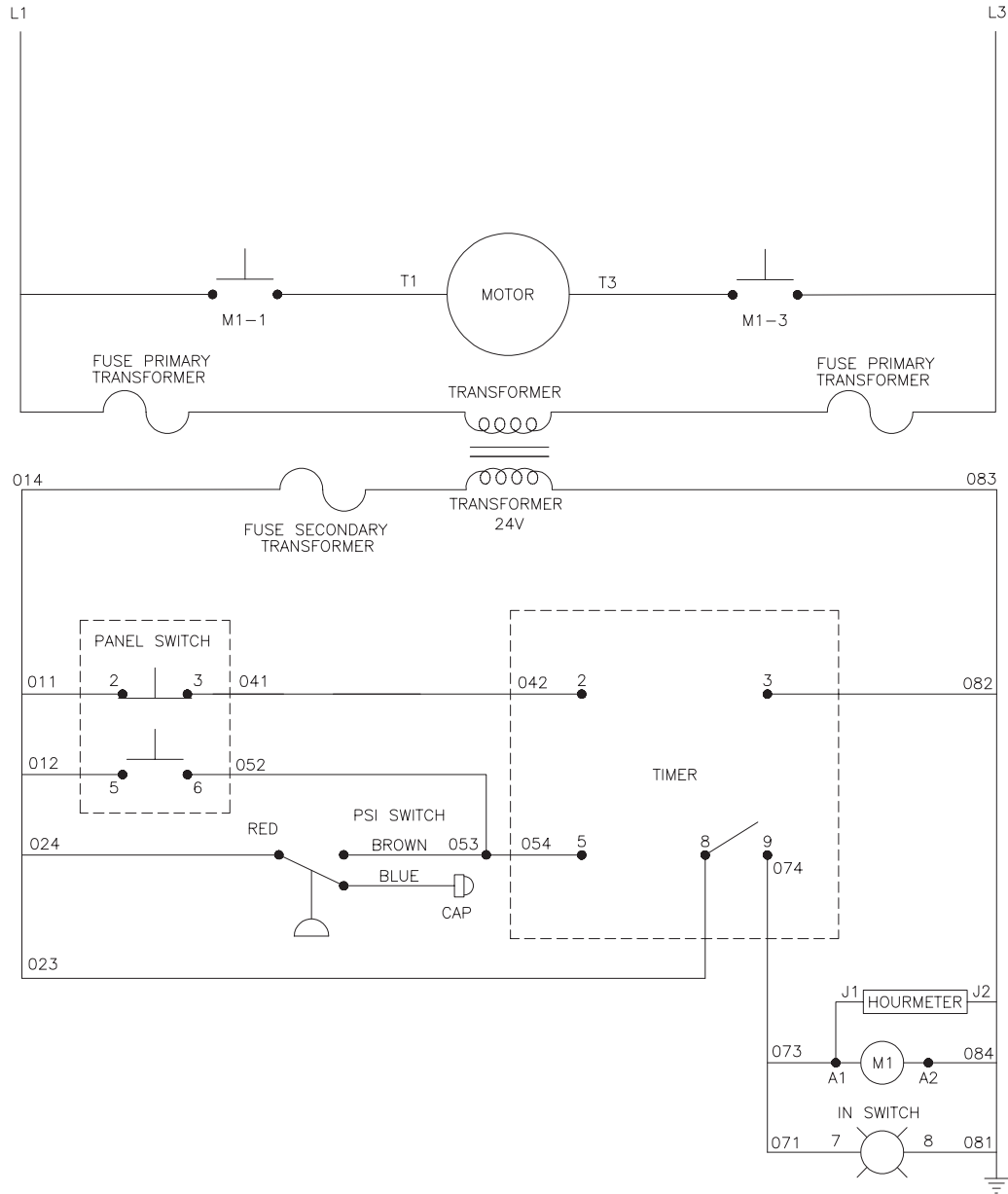
# UNLOADER ASSEMBLY (8-0633)



UNLOADER			
ITEM	DESCRIPTION	PART #	QTY
1	CAP	39-0252	1
2	NUT	46-1528	1
3	LOCKNUT	30-3156	1
4	KNOB	7-0242	1
5	SPRING	49-0171	1
6	FITTING	46-1529	1
7	O-RING (SEE KIT 70-0625)	SEE KIT	1
8	O-RING (SEE KIT 70-0625)	SEE KIT	1
9	O-RING (SEE KIT 70-0625)	SEE KIT	1
10	STEM	46-1530	1
11	PLUG	23-0244	2
12	O-RING (SEE KIT 70-0624)	SEE KIT	1
13	POPPET (SEE KIT 70-0624)	SEE KIT	1
14	SPRING (SEE KIT 70-0624)	SEE KIT	1
15	O-RING	25-0672	1
16	OUTLET FITTING	46-1531	1
17	INLET FITTING (SEE KIT 70-0625)	SEE KIT	1
18	O-RING (SEE KIT 70-0625)	SEE KIT	1
19	SPRING	49-0172	1
20	BALL (SEE KIT 70-0625)	SEE KIT	1
21	O-RING (SEE KIT 70-0625)	SEE KIT	1
22	SEAT	46-1532	1
23	FORGING	46-1533	1
24	BACKUP RING (SEE KIT 70-0625)	SEE KIT	2
25	O-RING (SEE KIT 70-0625)	SEE KIT	1
26	PIN (SEE KIT 70-0625)	SEE KIT	1

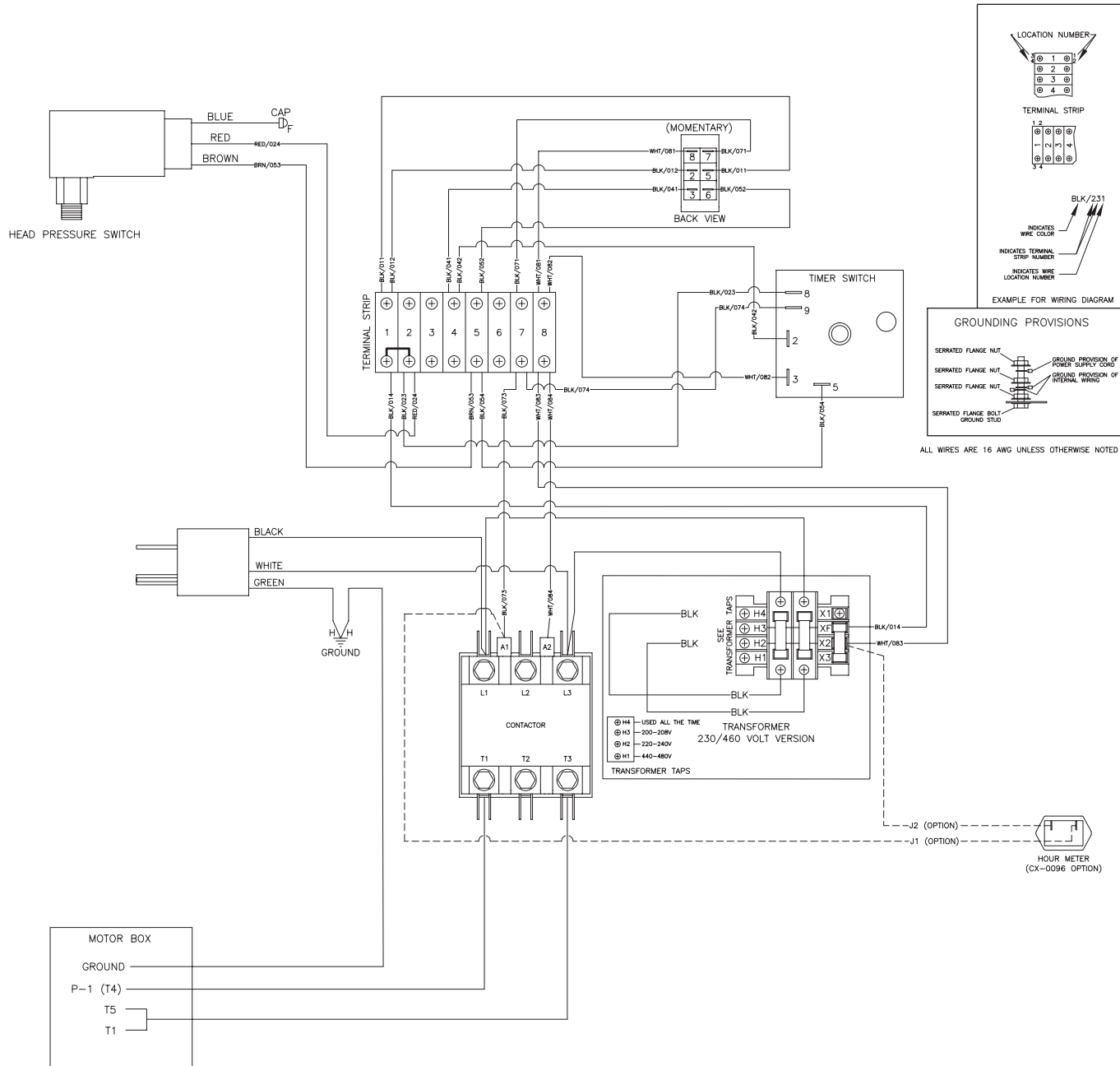
REPLACEMENT KITS			
KIT #	DESCRIPTION	ITEMS	QTY
70-0624	KIT - CHECK VALVE	12-14	1, 1, 1
70-0625	KIT - UNLOADER REBUILD	7-9, 17, 18, 20, 21, 24-26	1, 1, 1, 1, 1, 1, 1, 2, 1, 1

# WIRING SCHEMATIC SINGLE PHASE



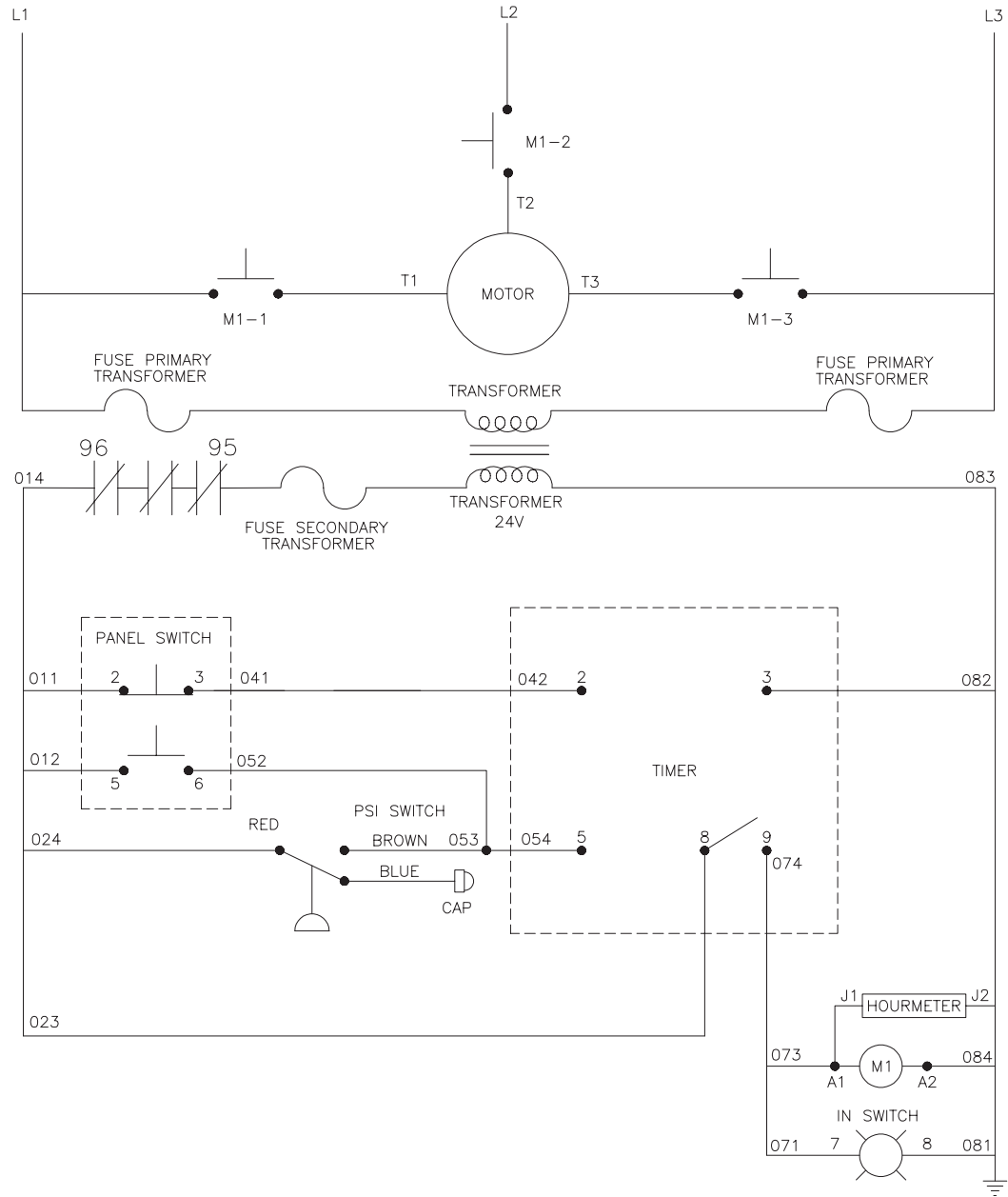


# WIRING DIAGRAM SINGLE PHASE



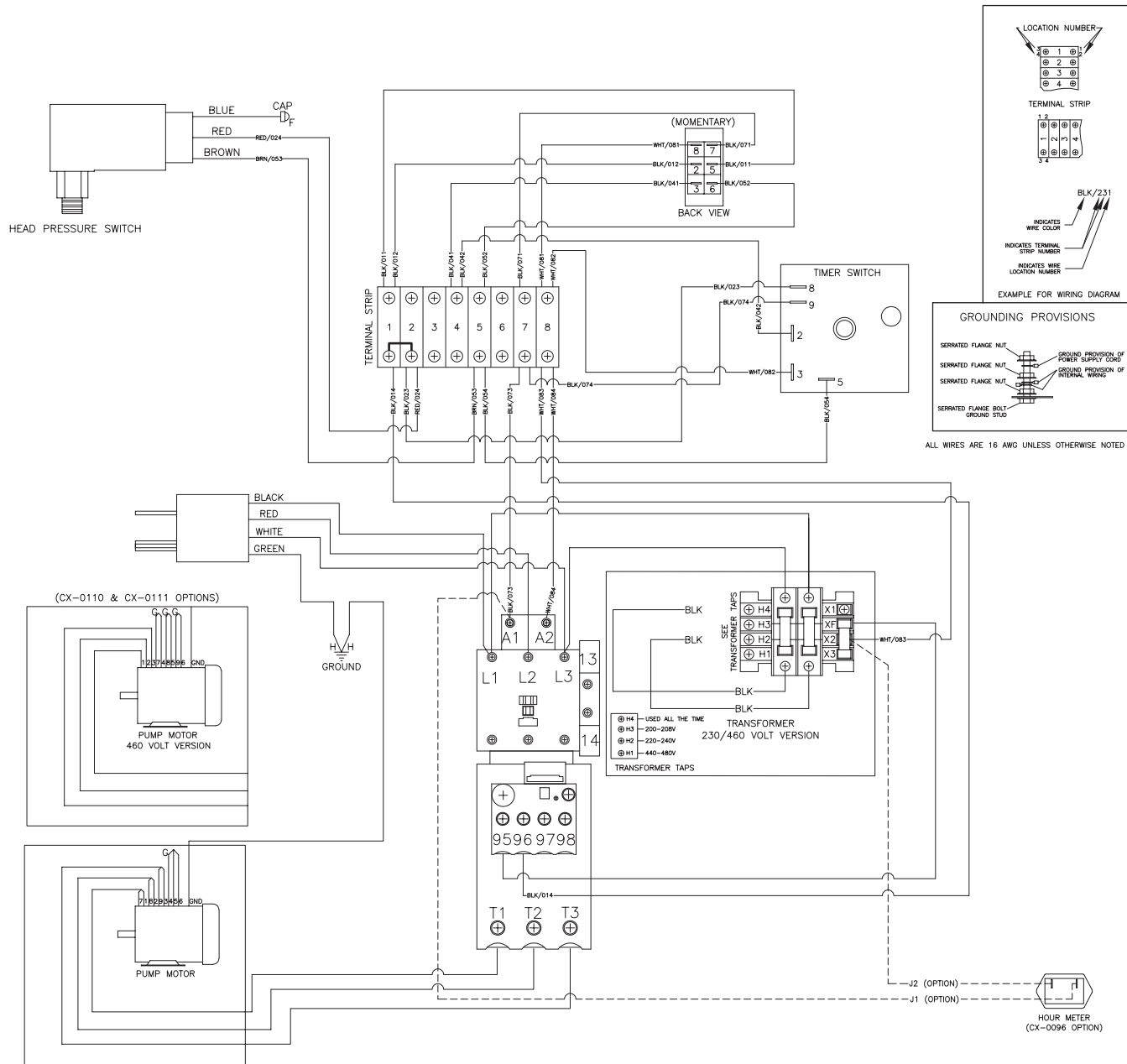
WD - CAW 6\_8HP 1PH (CX-0096) 102819 JJR

# WIRING SCHEMATIC THREE PHASE



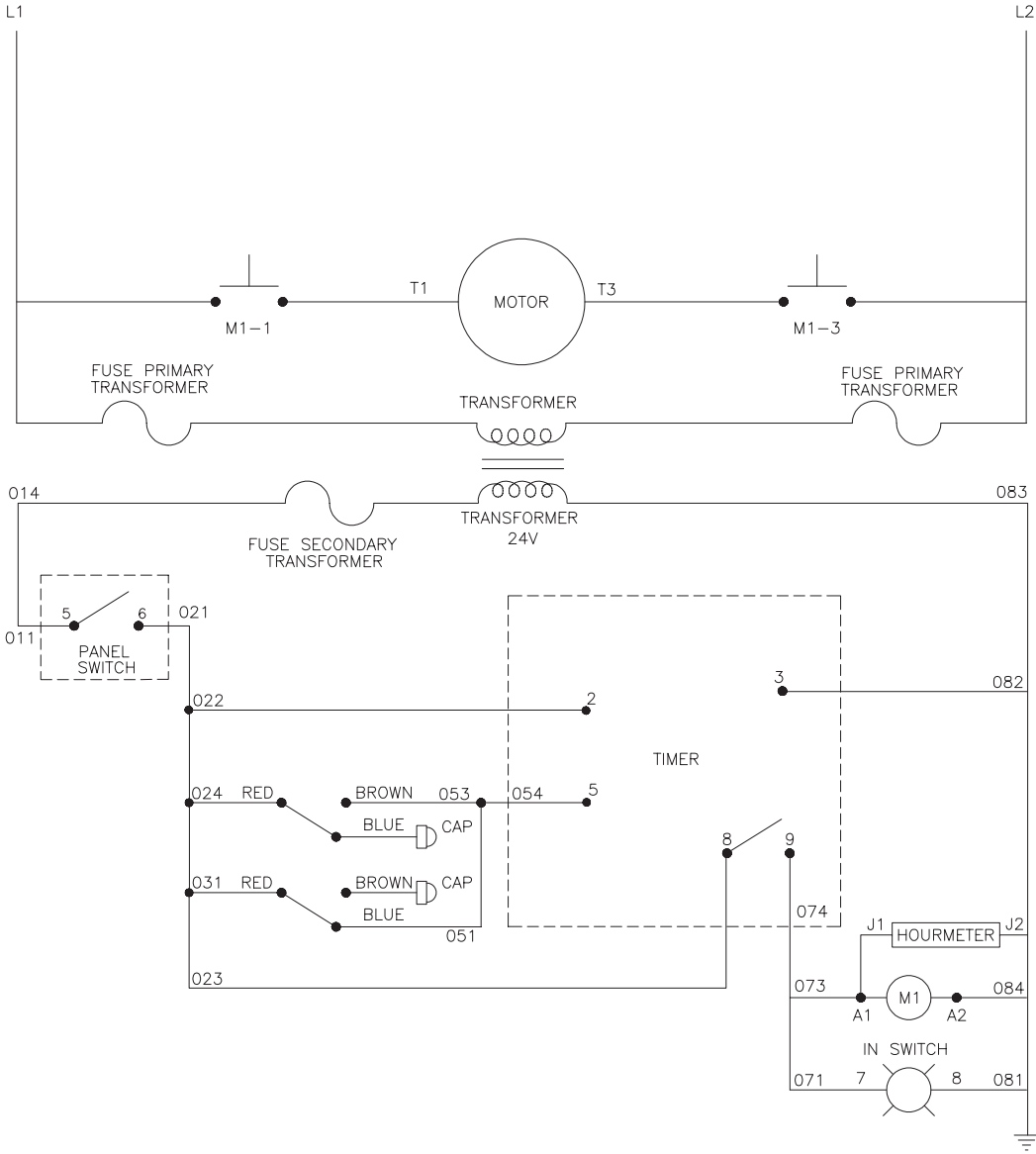
WS - CAW 6\_8HP 3PH (CX-0096\_110\_111) 102819 JJR

# WIRING DIAGRAM THREE PHASE



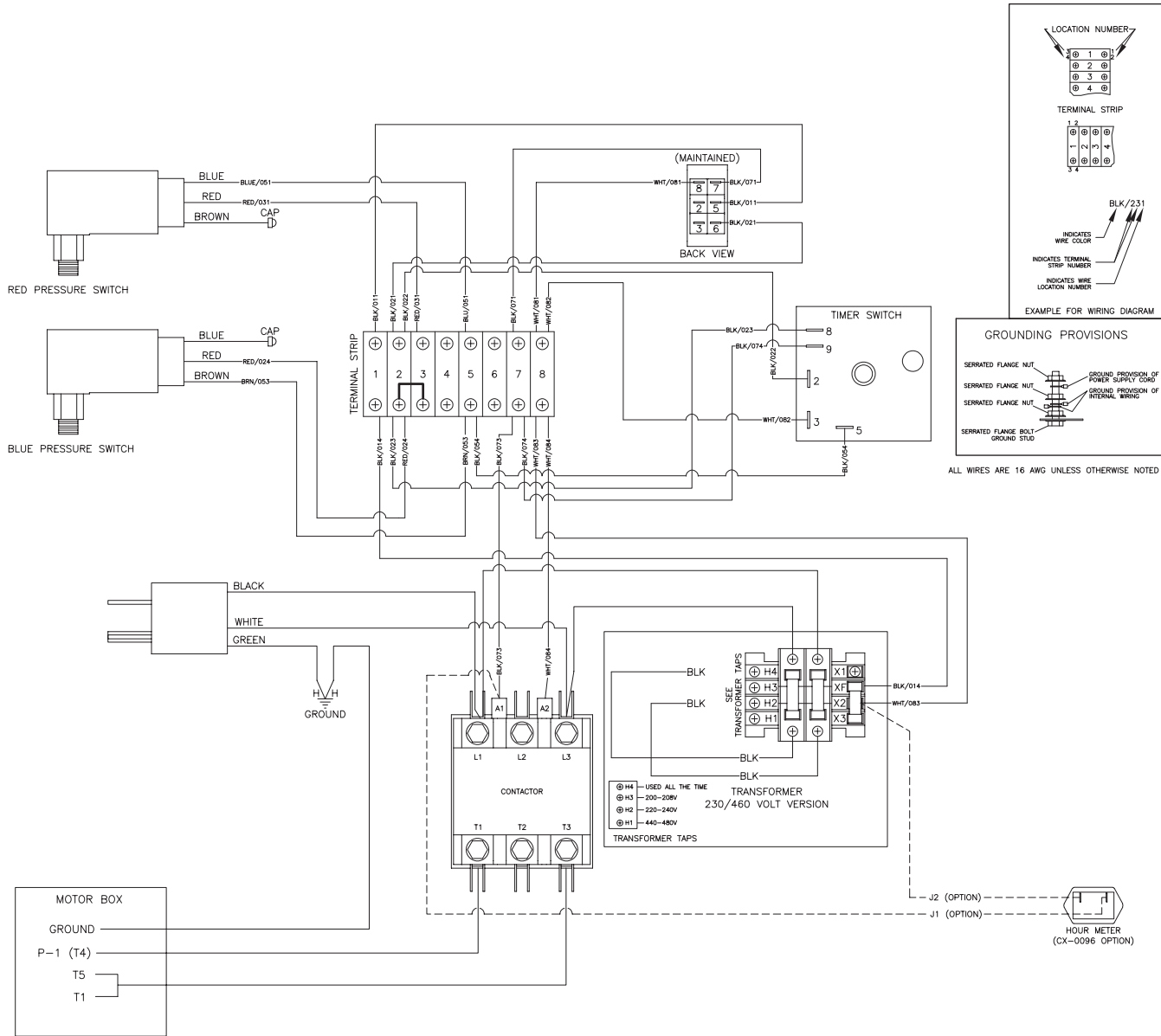
WD - CAW 6\_8HP 3PH (CX-0096\_110\_111) 102819 JJR

# WIRING SCHEMATIC SINGLE PHASE - AUTO - START/STOP



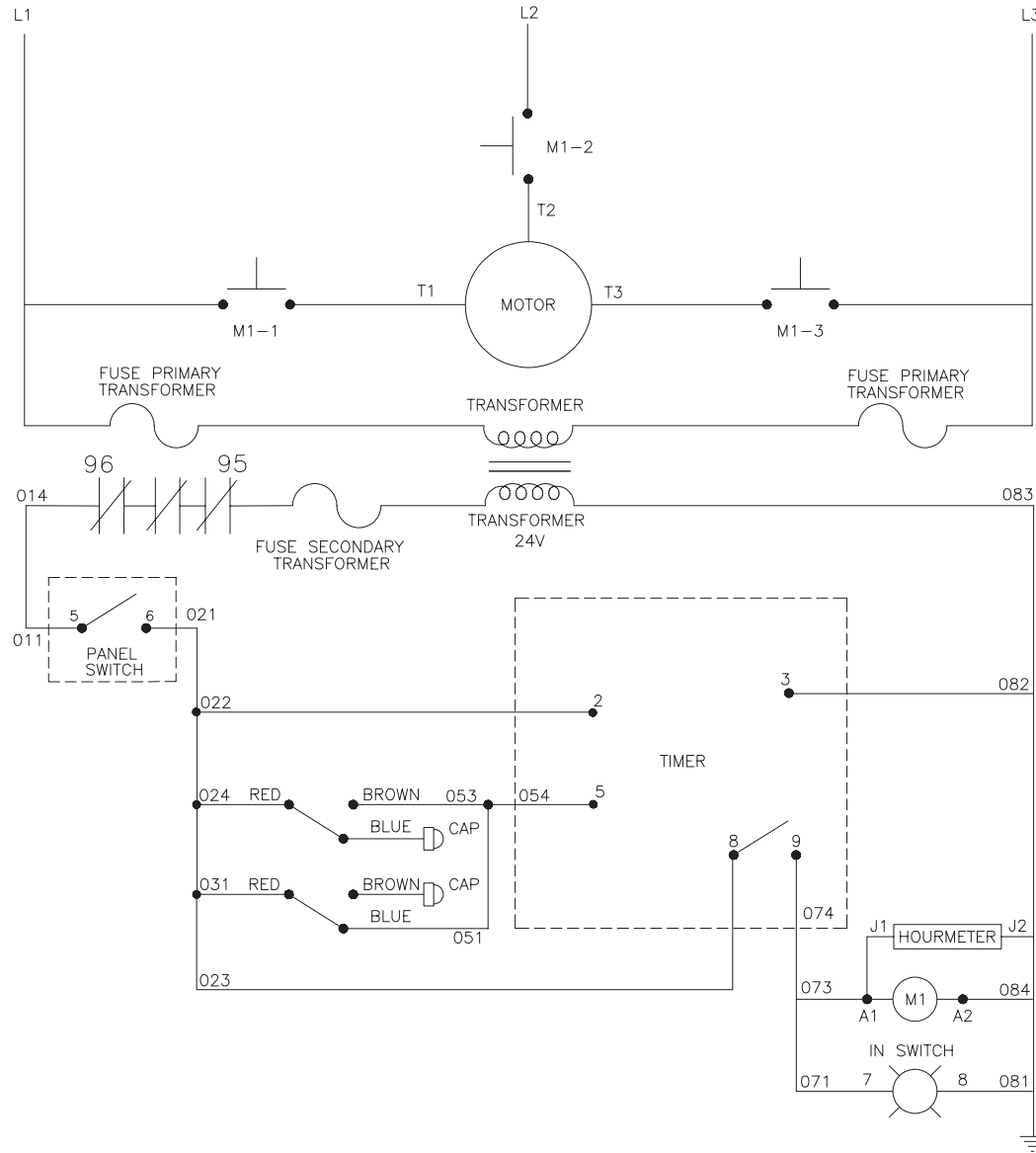
WS - CX-0112 AUTO SS CAW 6\_8HP 1PH (CX-0096) 102819 JJR

# WIRING DIAGRAM SINGLE PHASE - AUTO - START/STOP



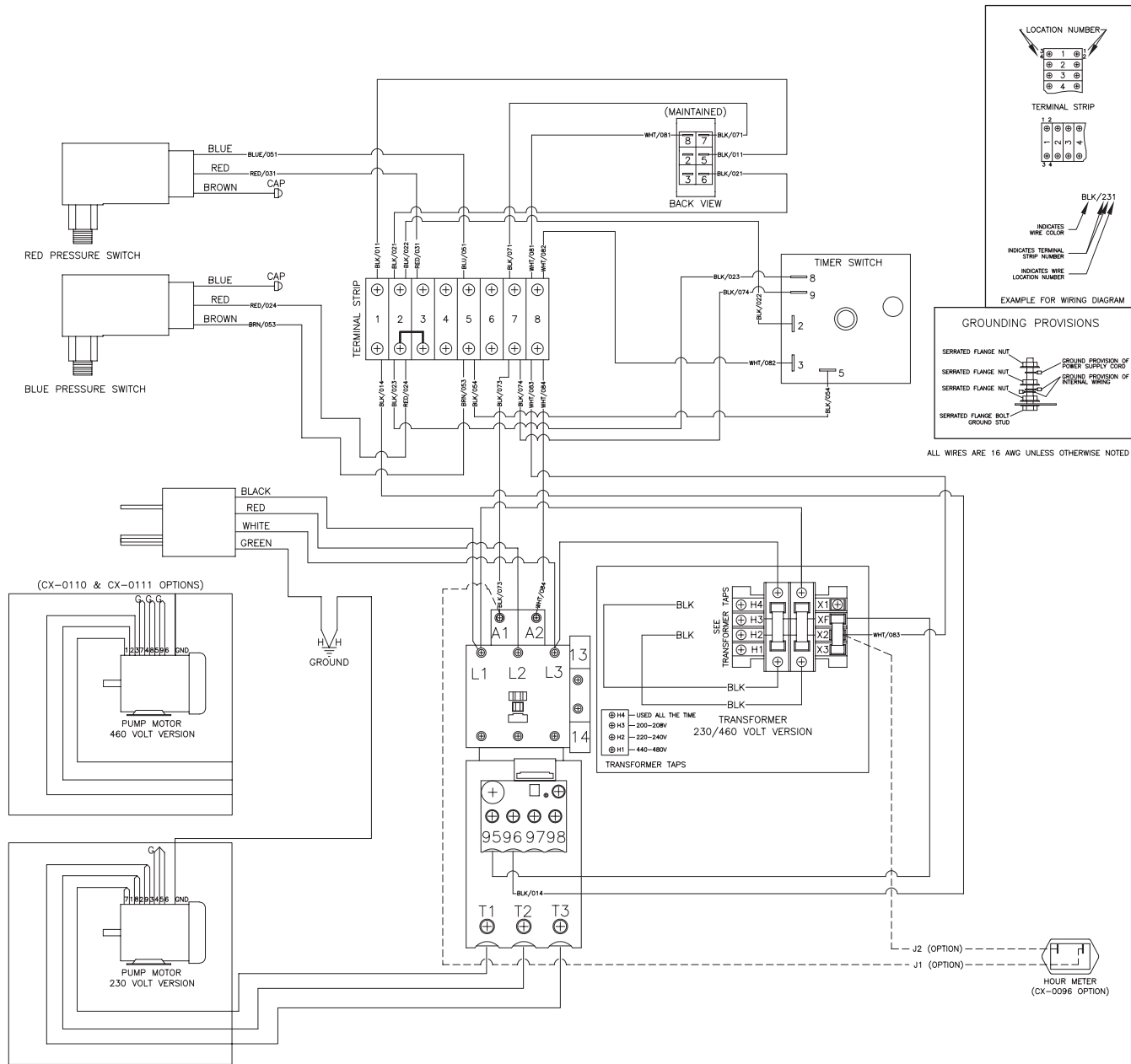
WD - CX-0112 AUTO SS CAW 6\_8HP 1PH (CX-0096) 102819 JJR

# WIRING SCHEMATIC THREE PHASE - AUTO - START/STOP



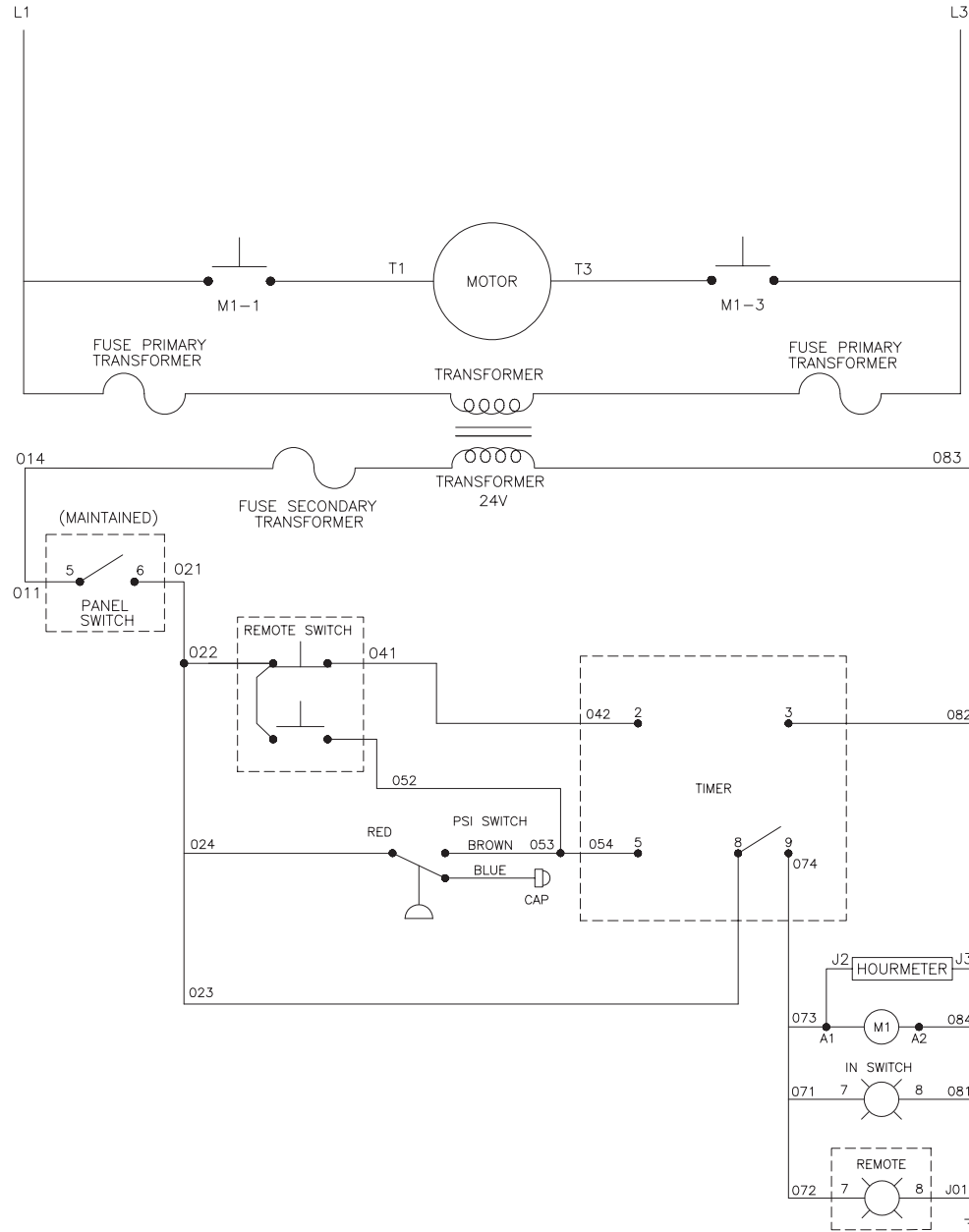
WS - CX-0112 AUTO SS CAW 6\_8HP 3PH (CX-0096\_110\_111) 102819 JJR

# WIRING DIAGRAM THREE PHASE - AUTO - START/STOP



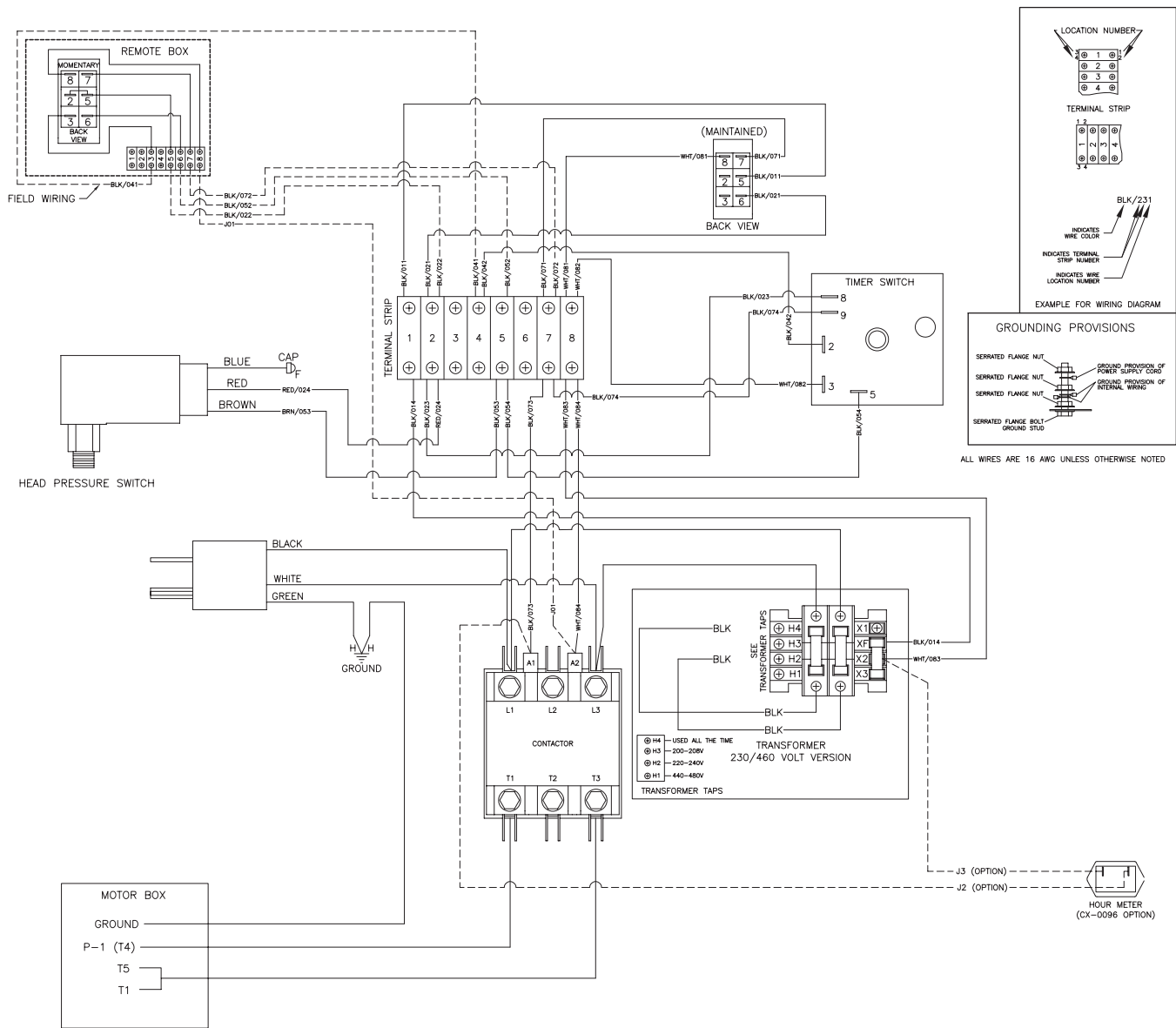
WD - CX-0112 AUTO SS CAW 6\_8HP 3PH (CX-0096\_110\_111) 102819 JJR

# WIRING SCHEMATIC SINGLE PHASE - REMOTE BOX

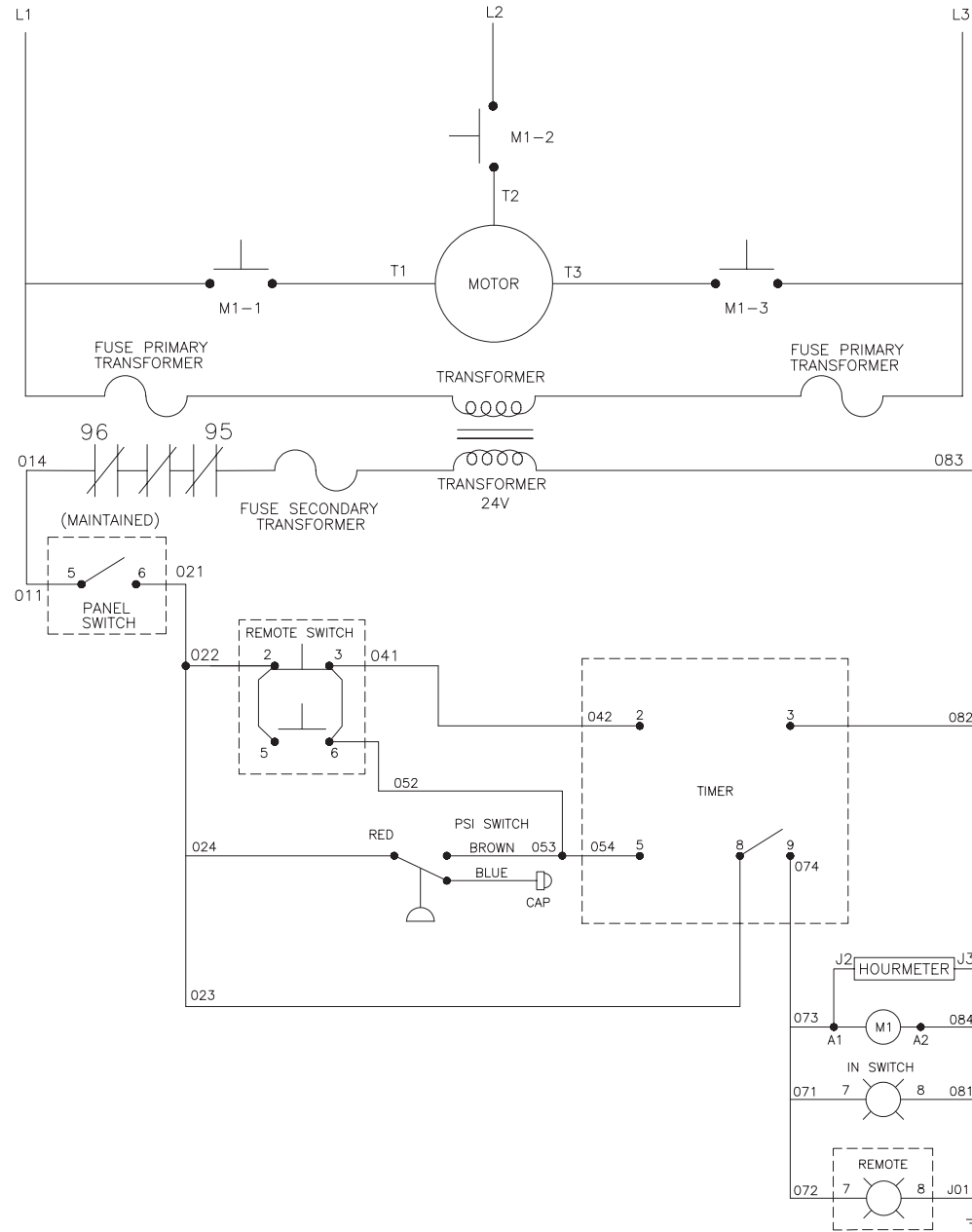




# WIRING DIAGRAM SINGLE PHASE - REMOTE BOX

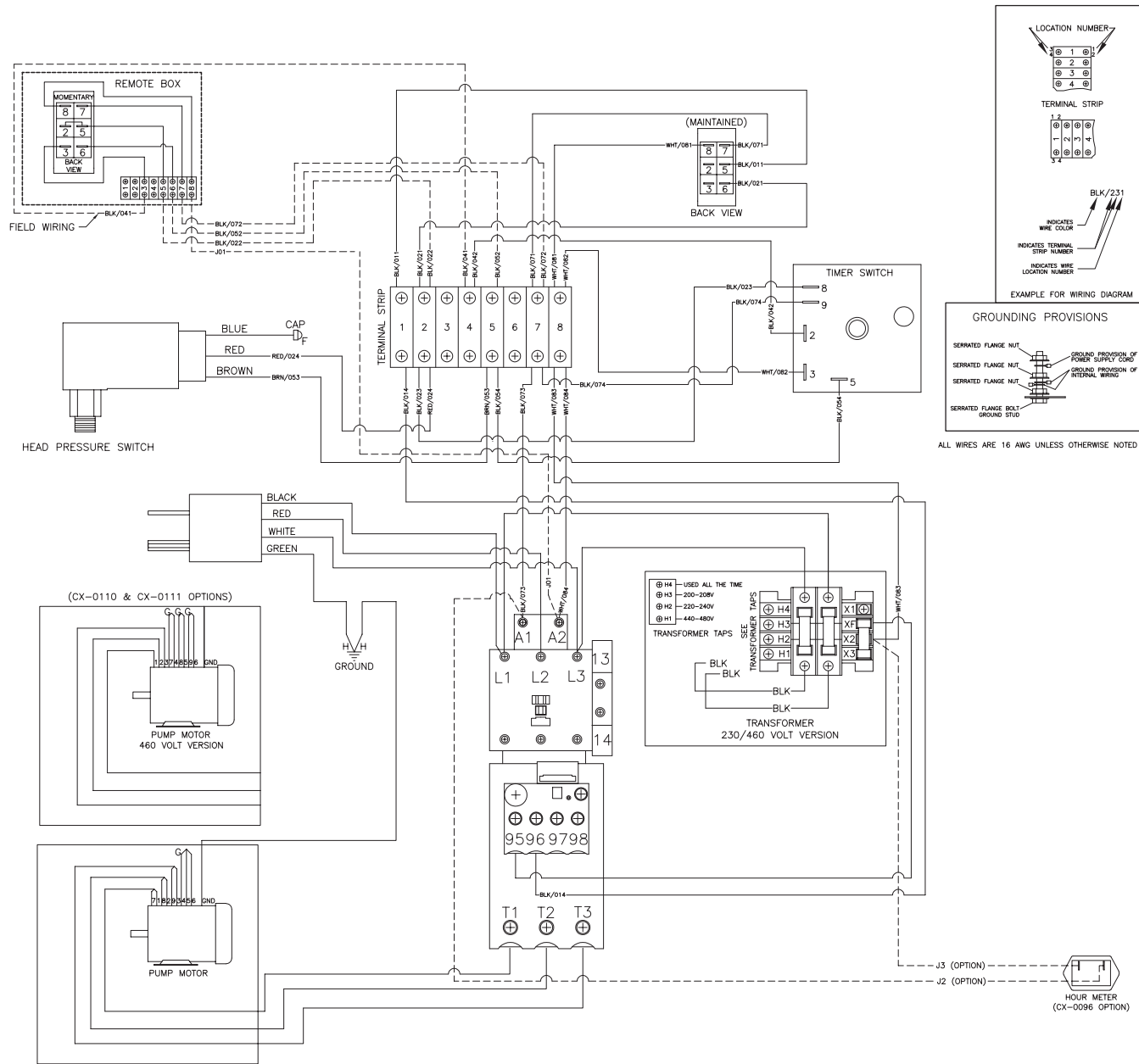


# WIRING SCHEMATIC THREE PHASE - REMOTE BOX

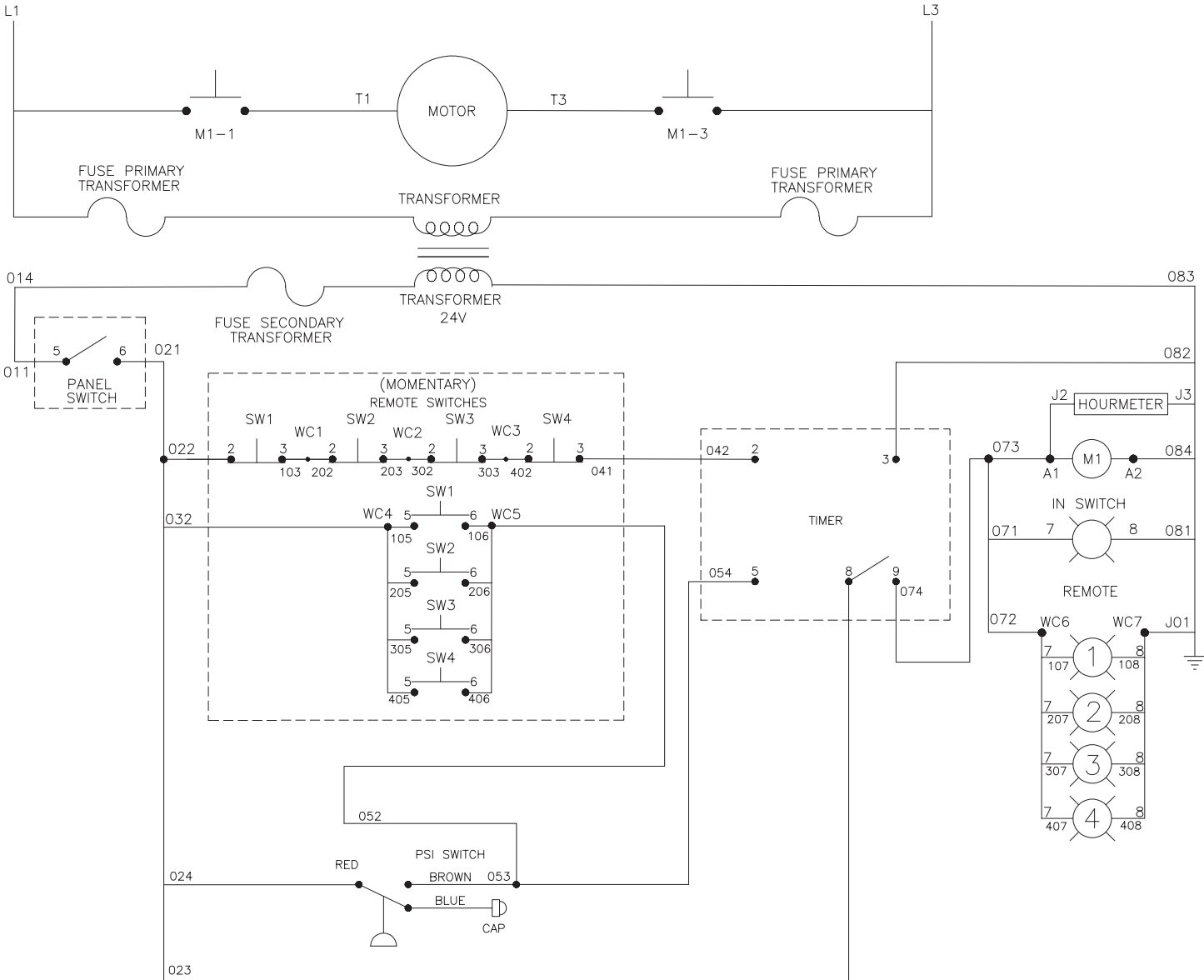


WS - CX-0078 RB CAW 6\_8HP 3PH (CX-0096\_110\_111) 102819 JJR

# WIRING DIAGRAM THREE PHASE - REMOTE BOX

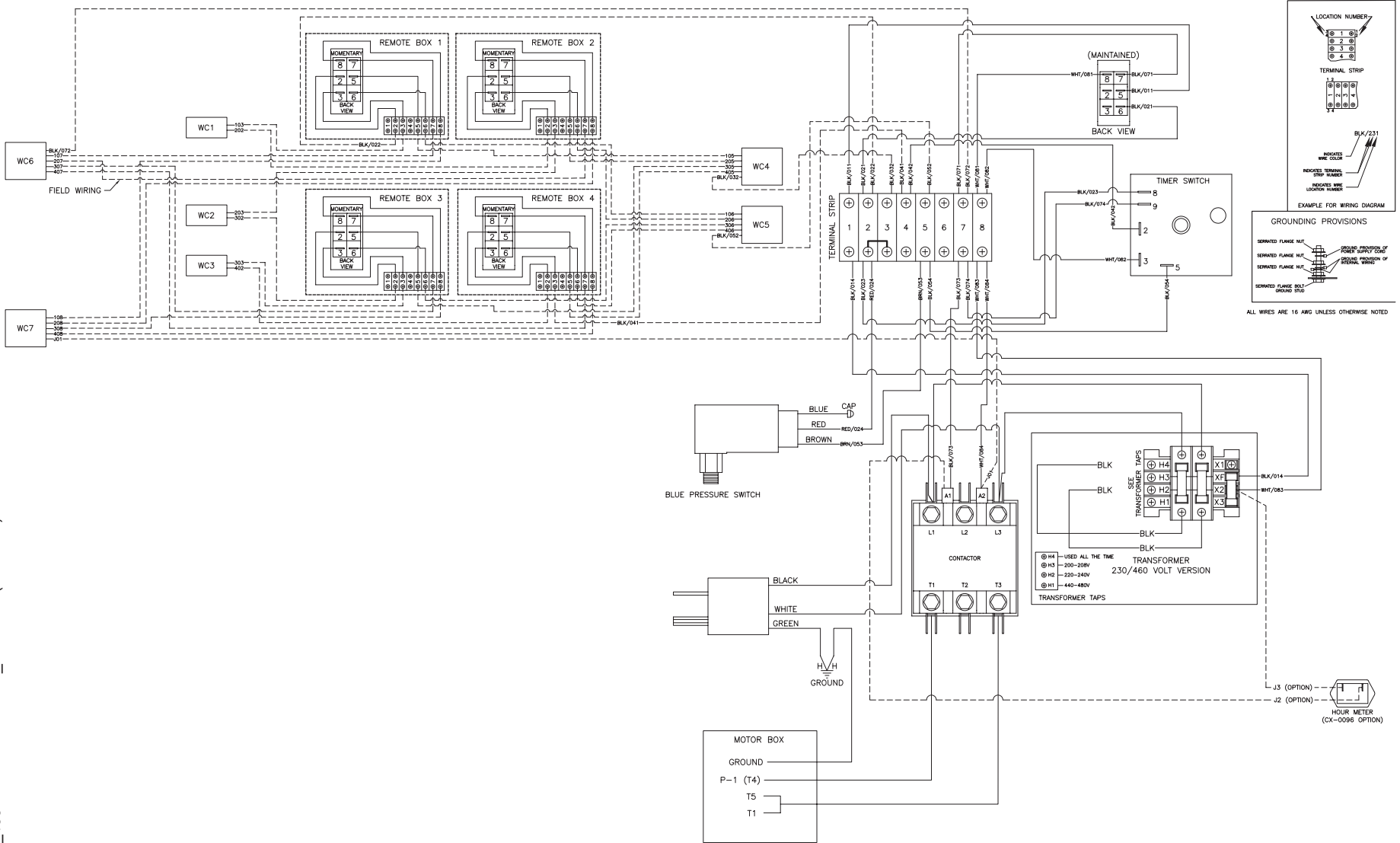


# WIRING SCHEMATIC SINGLE PHASE - MULTI REMOTE BOX



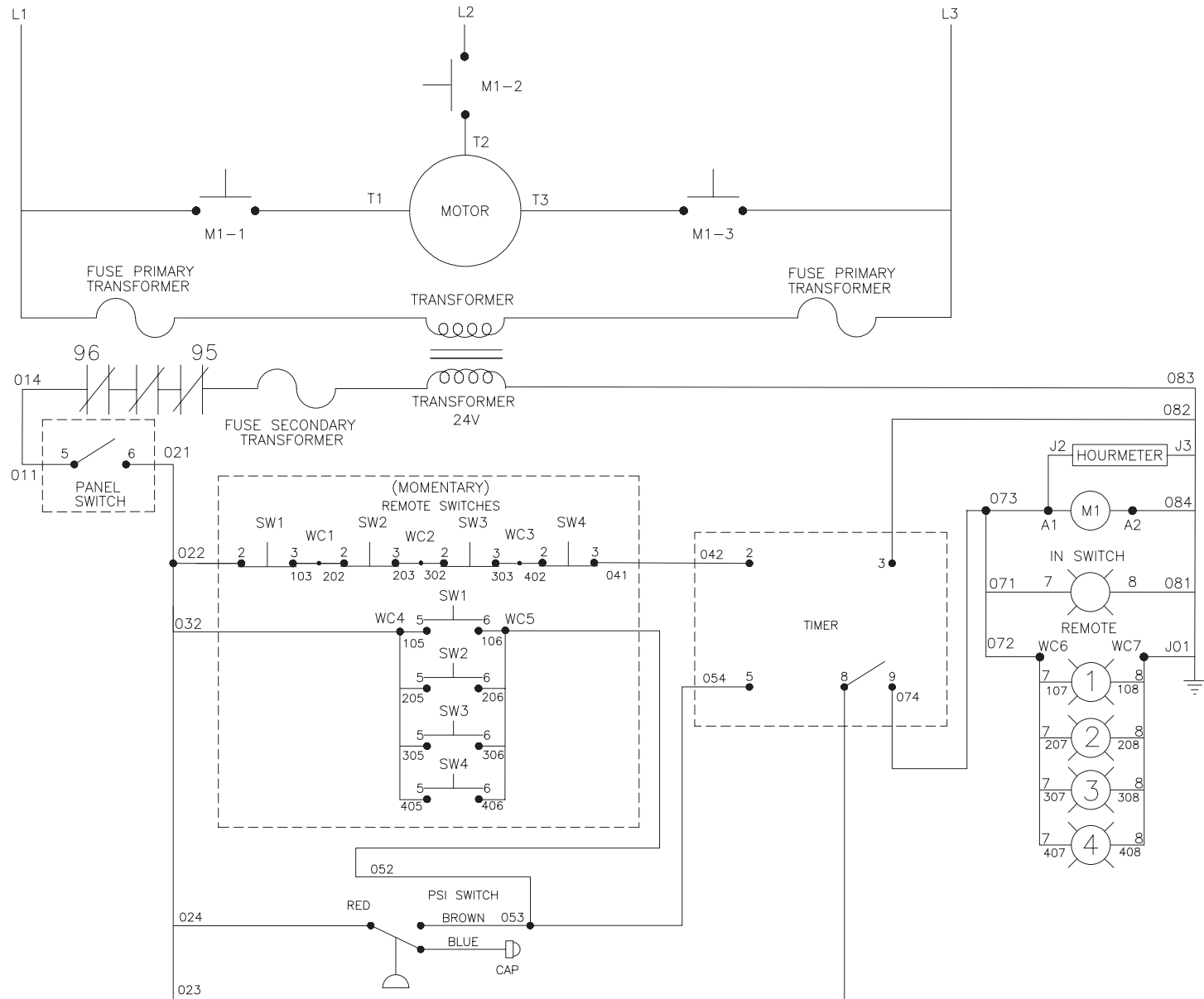
WS - CX-0078\_109 MULTI RB CAW 6\_8HP 1PH (CX-0096) 102819 JJR

# WIRING DIAGRAM SINGLE PHASE - MULTI REMOTE BOX



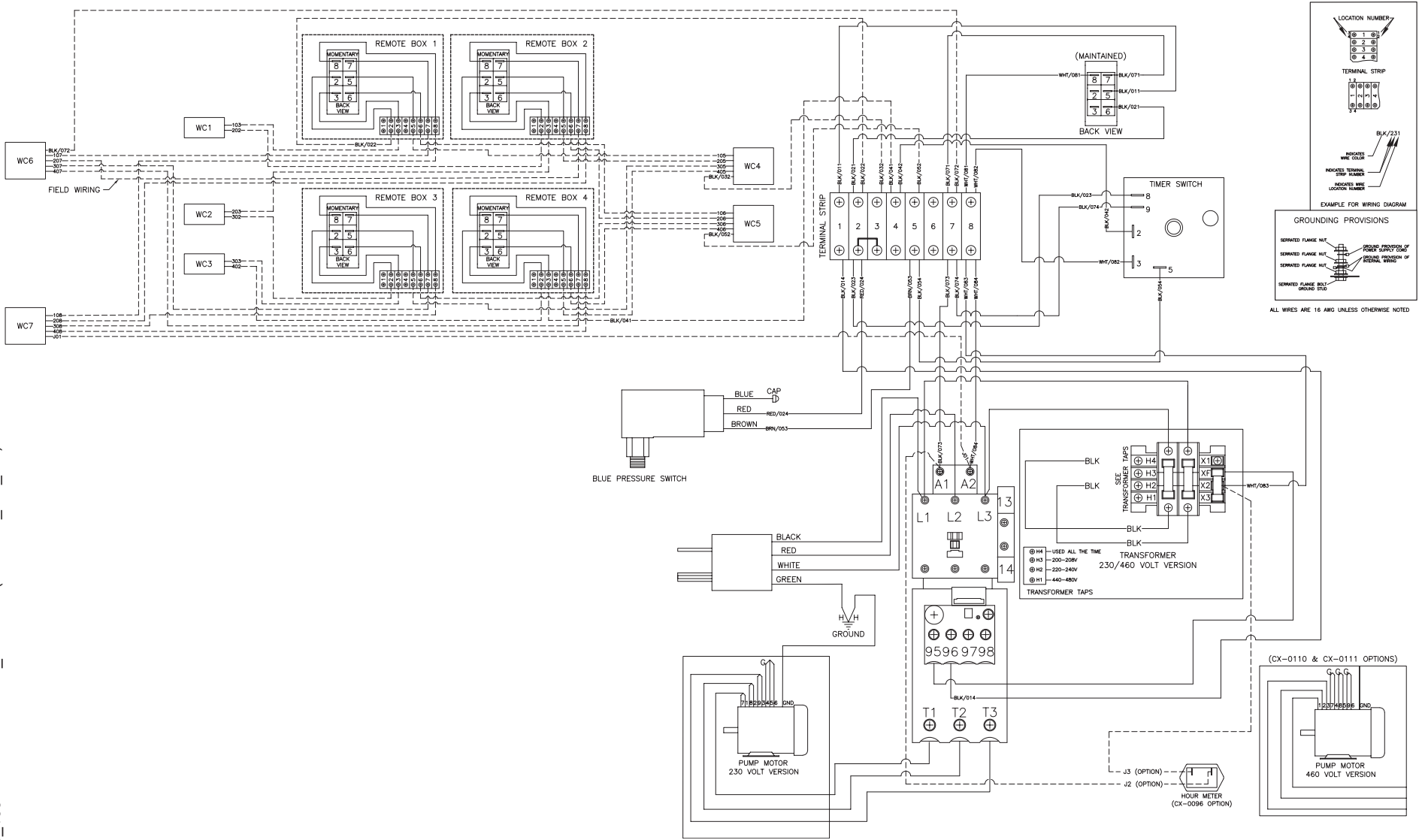
WD - CX-0078\_109 MULTIRB CAW 6\_8HP 1PH (CX-0096) 102819 JJR

# WIRING SCHEMATIC THREE PHASE - MULTI REMOTE BOX



WS - CX-0078\_109 MULTI RB CAW 6\_8HP 3PH (CX-0096\_110\_111) 102819 JJR

# WIRING DIAGRAM THREE PHASE - MULTI REMOTE BOX



**LOCATION NUMBER**

1 2 3 4

**TERMINAL STRIP**

1 2 3 4

INDICATES WIRE COLOR

INDICATES TERMINAL STRIP NUMBER

INDICATES WIRE LOCATION NUMBER

EXAMPLE FOR WIRING DIAGRAM

**GROUNDING PROVISIONS**

SEPARATED FLANGE NUT

SEPARATED FLANGE NUT

SEPARATED FLANGE NUT

GROUND PROVISION OF FIRST SUPPORT CABLE

GROUND PROVISION OF SECOND WIRE

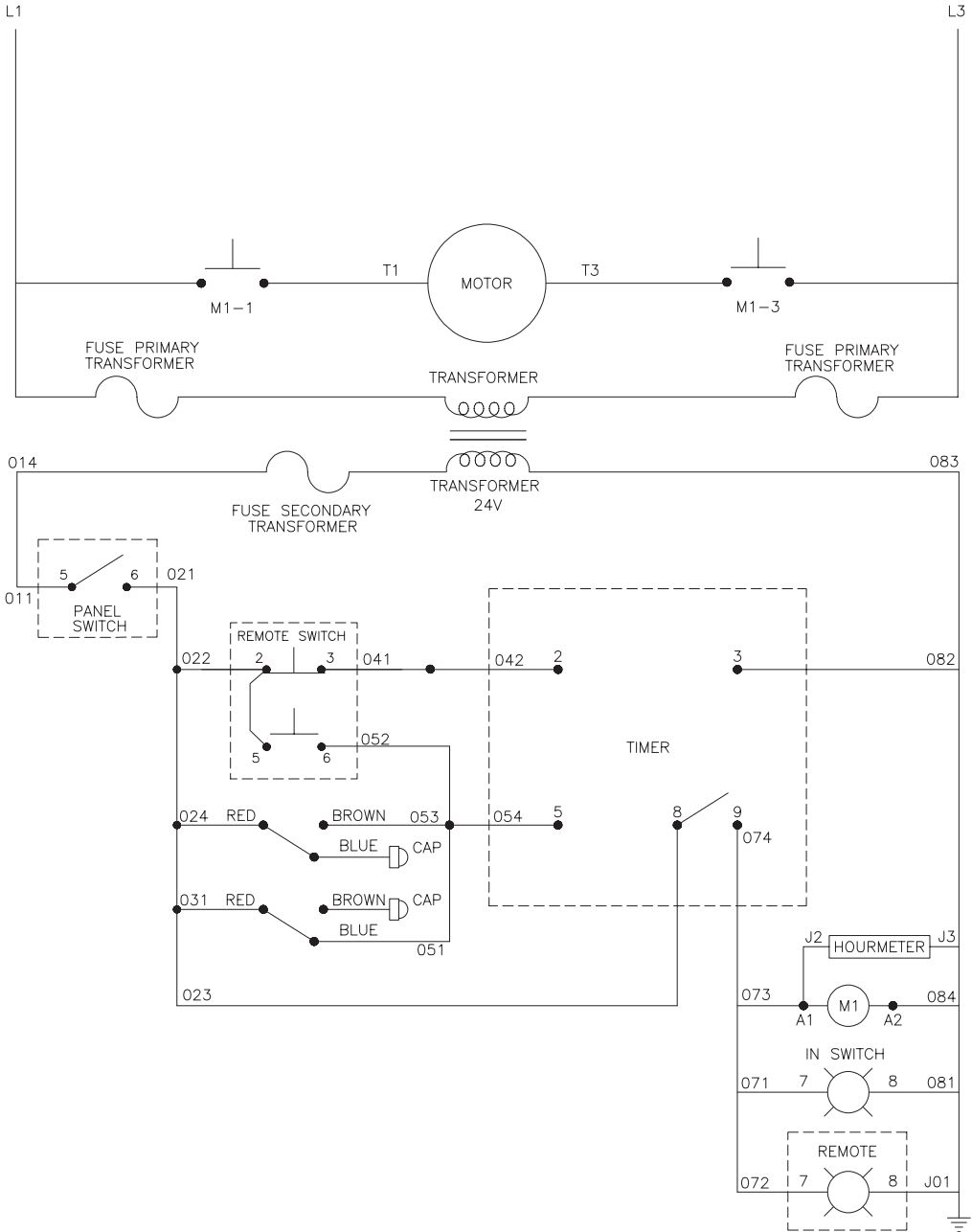
GROUND PROVISION OF THIRD WIRE

GROUND PROVISION OF GROUND BOND

ALL WIRES ARE 16 AWG UNLESS OTHERWISE NOTED

WD - CX-0078\_109 MULTI RB CAW 6\_8HP 3PH (CX-0096\_110\_111) 102819 JJR

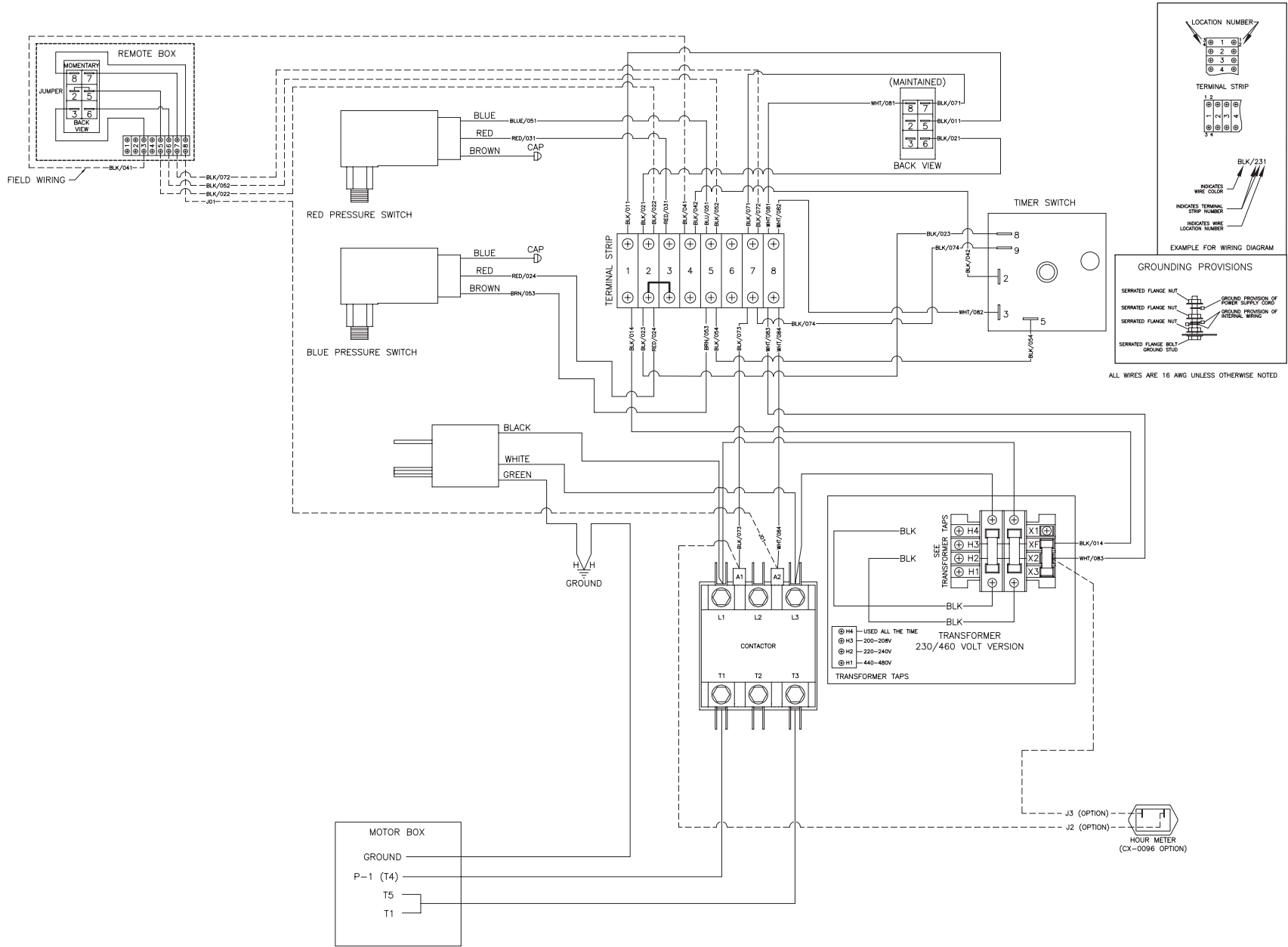
# WIRING SCHEMATIC SINGLE PHASE - AUTO START/STOP, REMOTE BOX



WS - CX-0078\_112 AUTO SS, RB CAW 6\_8HP 1PH (CX-0096) 102819 JJR

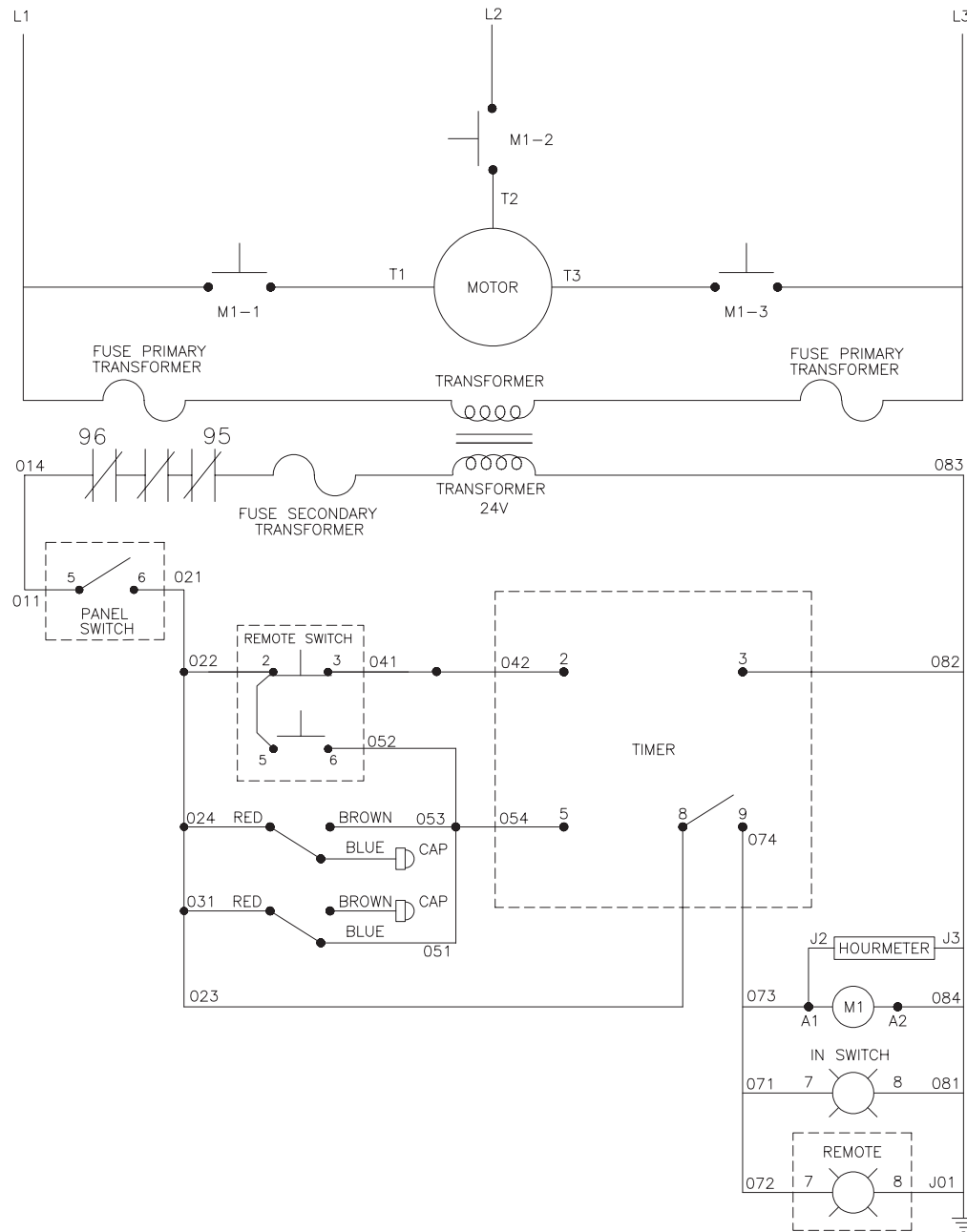


# WIRING DIAGRAM SINGLE PHASE - AUTO START/STOP, REMOTE BOX



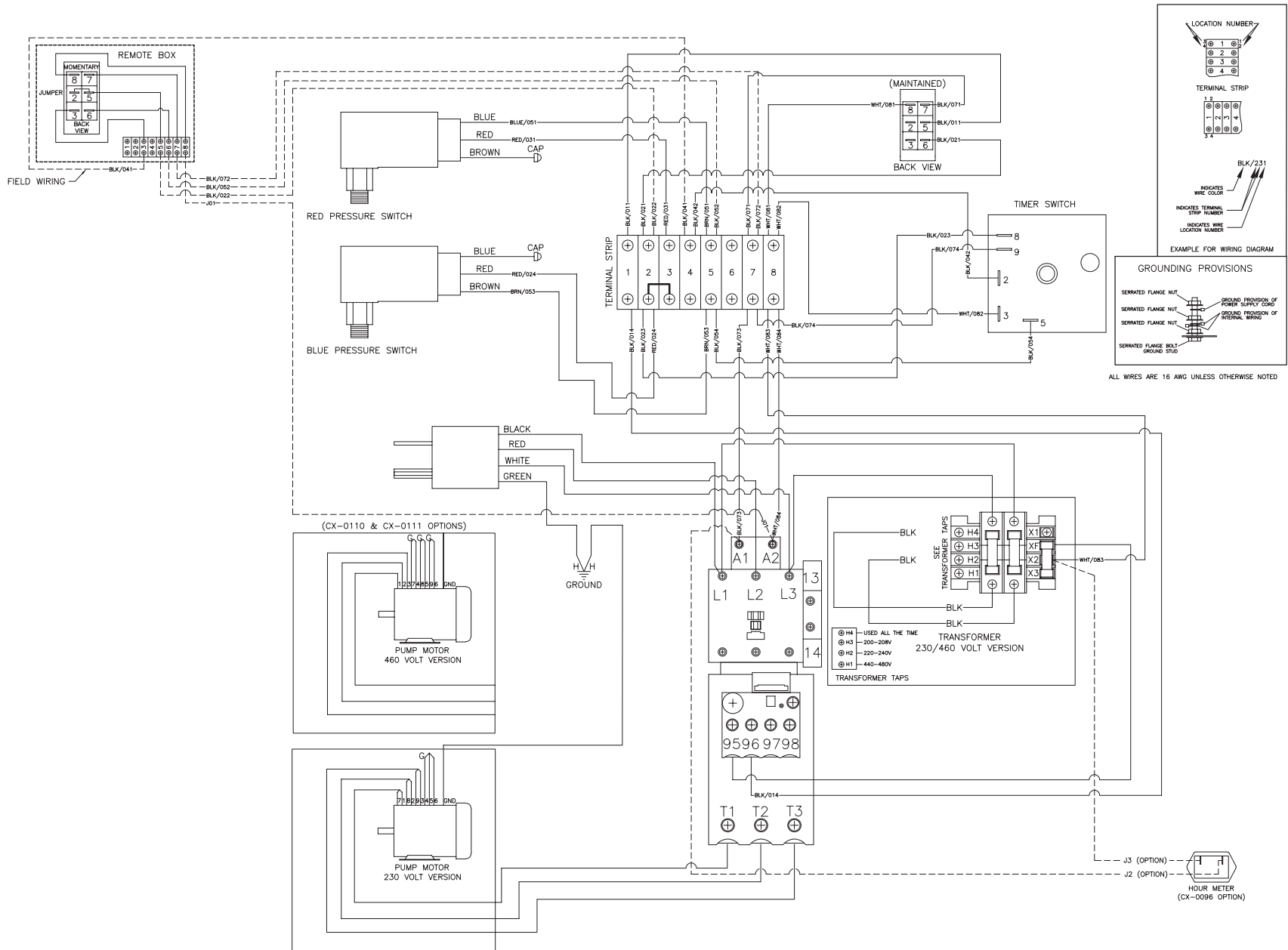
WD - CX-0078\_112 AUTO SS, RB CAW 6\_8HP 1PH (CX-0096) 102819 JJR

# WIRING SCHEMATIC THREE PHASE - AUTO START/STOP, REMOTE BOX



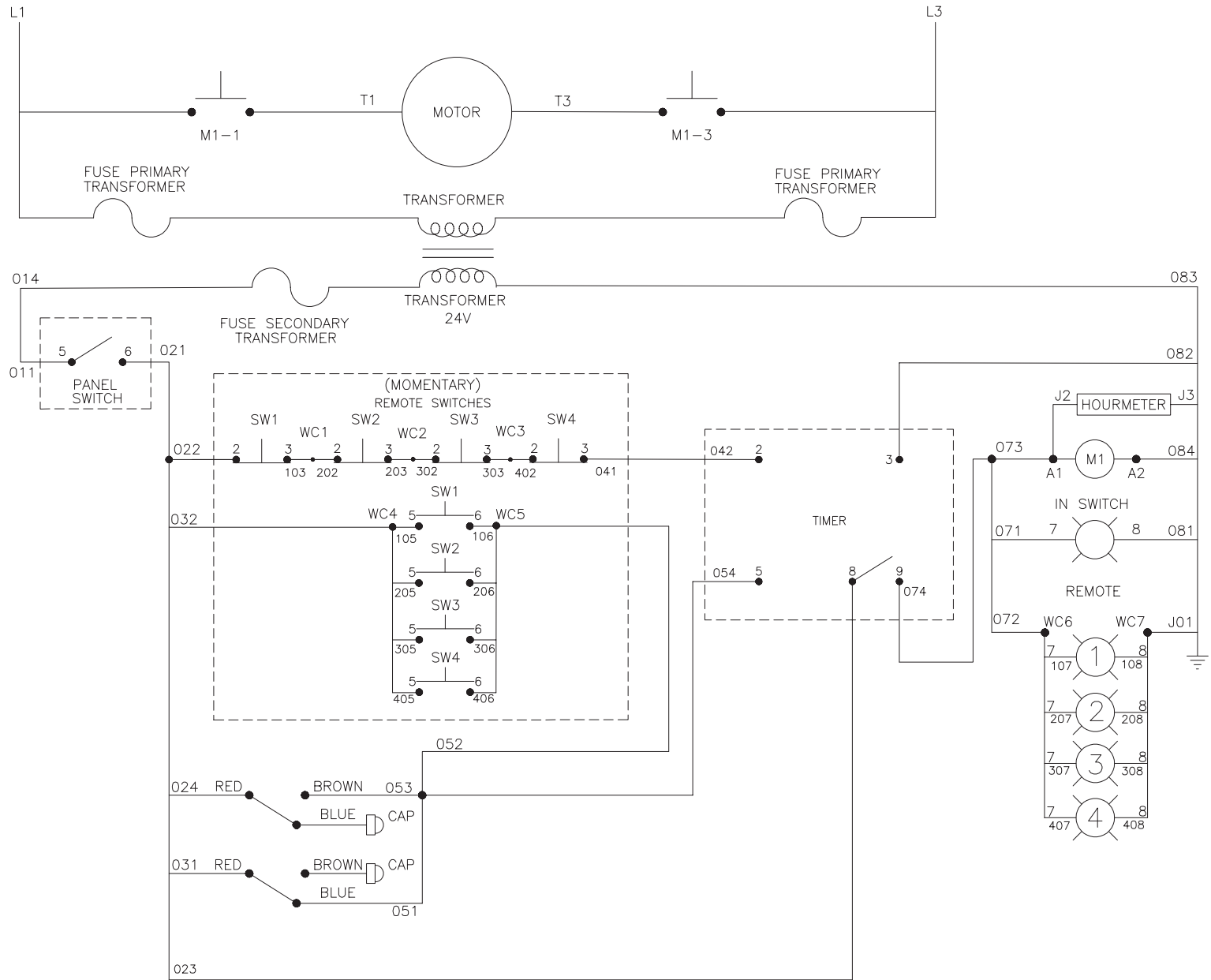
WS - CX-0078\_112 AUTO SS, RB CAW 6\_8HP 3PH (CX-0096\_110\_111) 102819 JJR

# WIRING DIAGRAM THREE PHASE - AUTO START/STOP, REMOTE BOX



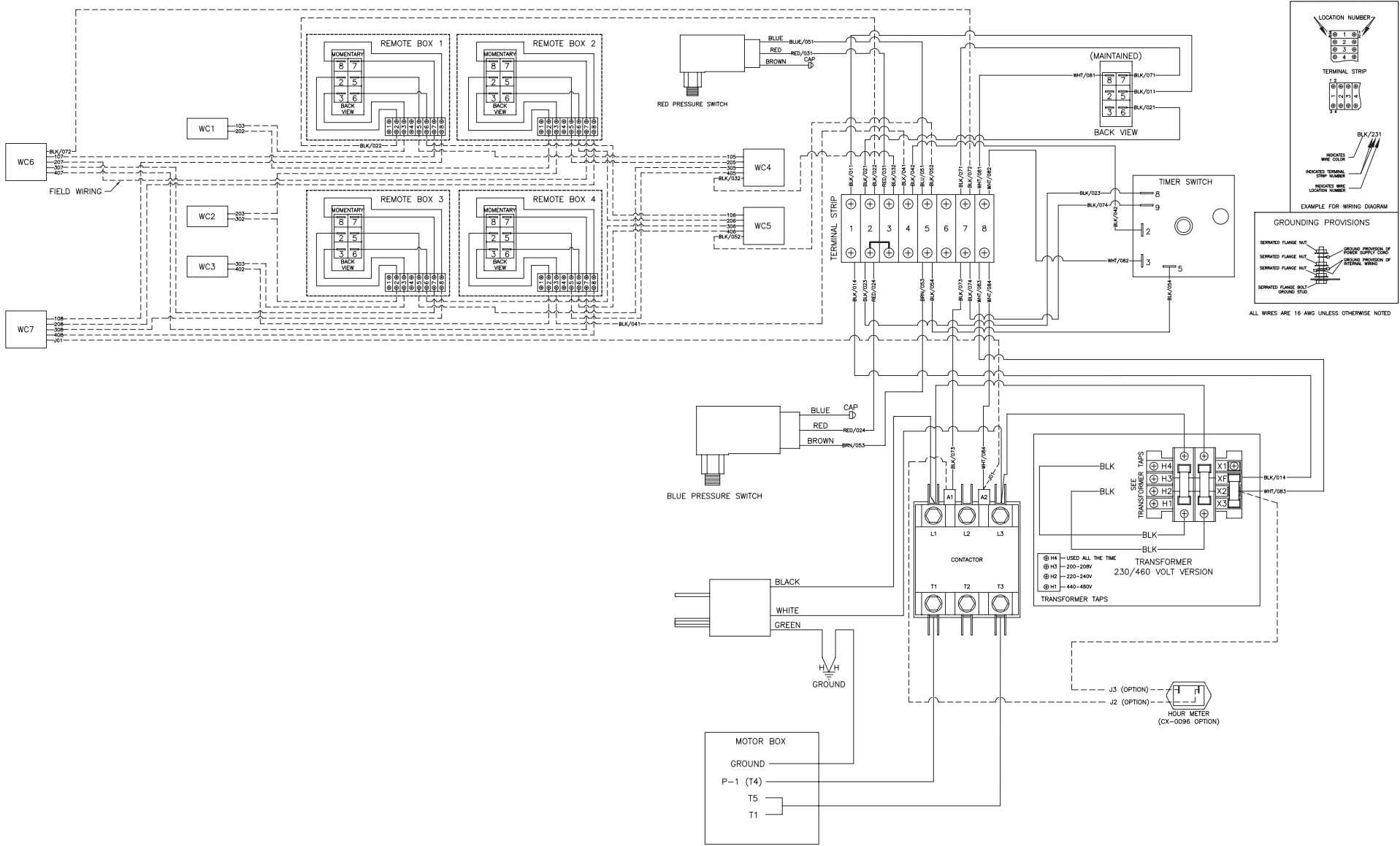
WD - CX-0078\_112 AUTO SS, RB CAW 6\_8HP 3PH (CX-0096\_110\_111) 102819 JJR

# WIRING SCHEMATIC SINGLE PHASE - AUTO START/STOP, MULTI REMOTE BOX



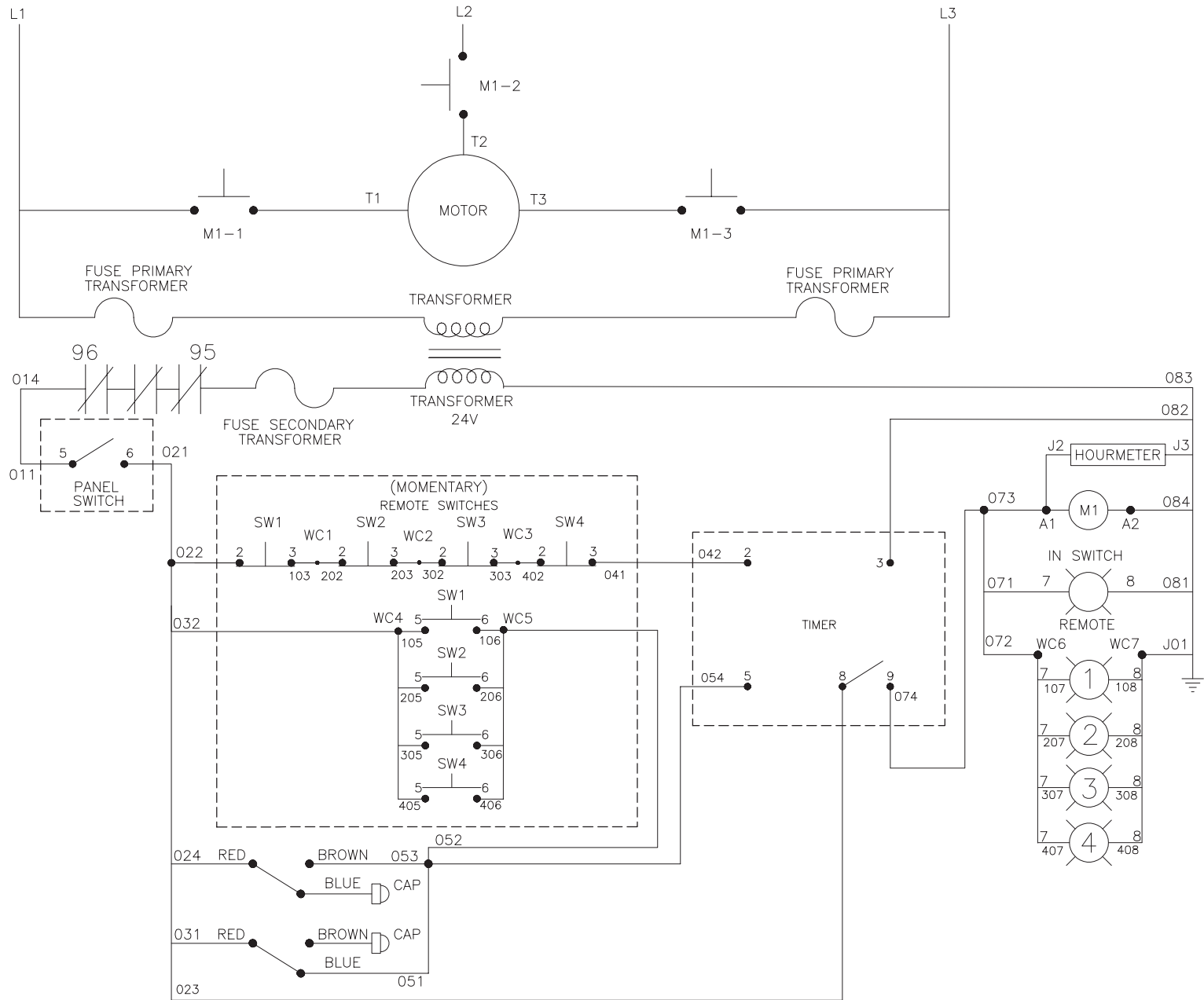
WS - CX-0078\_109\_112 AUTO SS, MULTI RB CAW 6\_8HP 1PH (CX-0096) 102819 JJR

# WIRING DIAGRAM SINGLE PHASE - AUTO START/STOP, MULTI REMOTE BOX



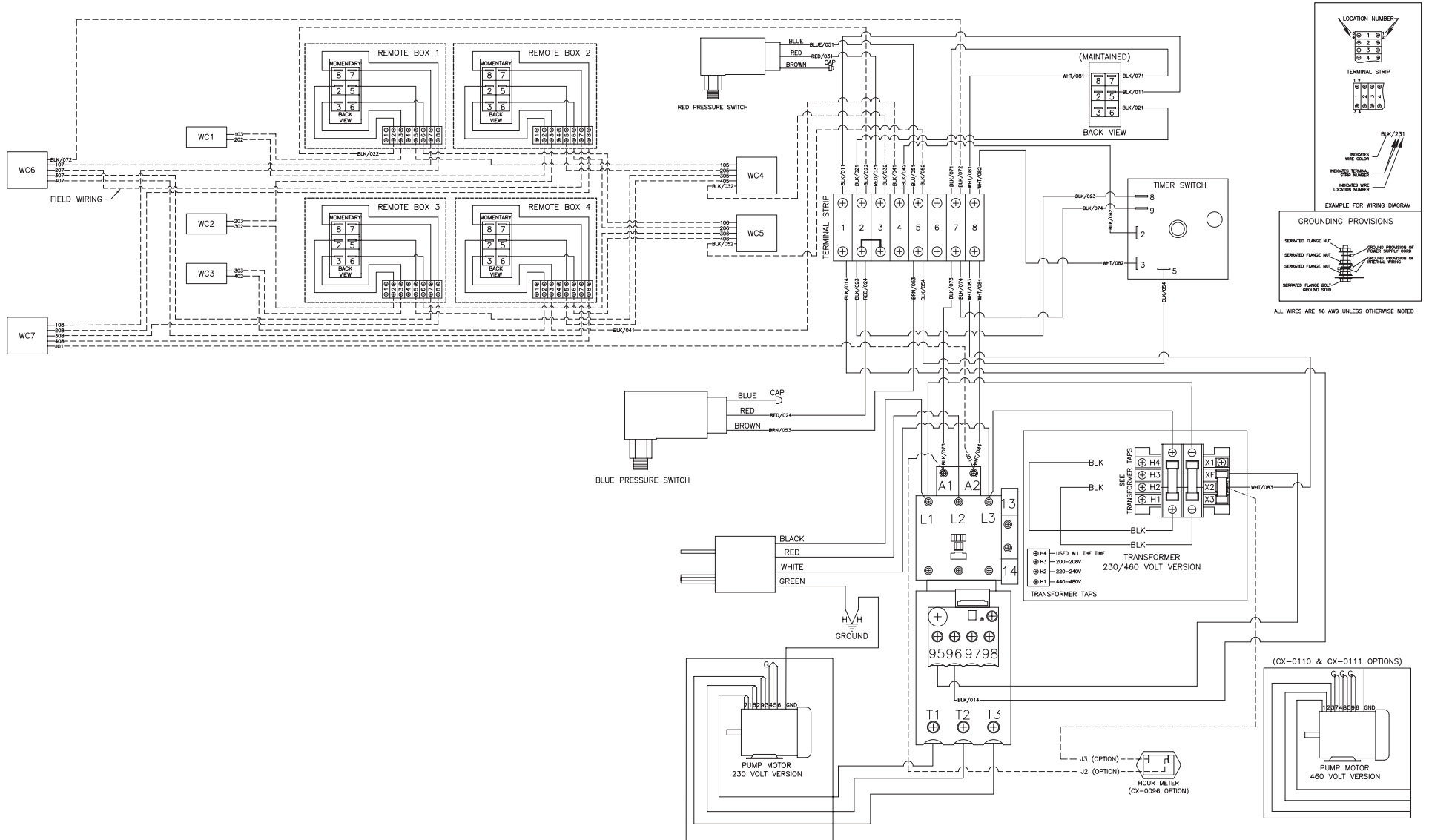
WD - CX-0078\_109\_112 AUTO SS, MULTI RB CAW 6\_8HP 1PH (CX-0096) 102819 JJR

# WIRING SCHEMATIC THREE PHASE - AUTO START/STOP, MULTI REMOTE BOX



WS - CX-0078\_109\_112 AUTO SS, MULTI RB CAW 6\_8HP 3PH (CX-0096\_110\_111) 102819 JJR

# WIRING DIAGRAM THREE PHASE - AUTO START/STOP, MULTI REMOTE BOX



WD - CX-0078\_109\_112 AUTO SS, MULTI RB CAW 6\_8HP 3PH (CX-0096\_110\_111) 102819 JJR

