

PARTS LIST FOR
1003/2004/3004 SERIES
STATIONARY/STAINLESS
ELECTRIC DRIVEN/BELT DRIVE
COLD WATER PRESSURE WASHER
(AFTER SERIAL #10495457)

Motor Horsepower:

1003: 2.0 H.P.

2004: 6.0 H.P.

3004: 8.0 H.P.

Pump Oil Grade: Pump Oil #AW-4085-0016

Pump Oil Capacity: 41 oz.

Nozzle Size:

1003: 5.0

2004: 5.5

3004: 4.0

This Parts Listing has been compiled for your benefit. You can be assured your new Cold Water Pressure Washer was constructed and designed with quality and performance in mind using over 25 years experience in the pressure washer business. Each component has been rigorously tested to insure the highest level of acceptance.

The contents of this Parts Listing are based on the latest product information available at the time of publication. The manufacturer reserves the right to make changes in price, color, materials, equipment, specifications or models at any time without notice.

WARNING
 THIS IS A PROFESSIONAL HIGH PRESSURE, COLD WATER PRESSURE WASHER. CAUTION SHOULD BE OBSERVED WHEN USING OR REPAIRING THIS UNIT! READ AND FOLLOW THE SAFETY WARNINGS LISTED BELOW BEFORE ATTEMPTING ANY REPAIRS ON THIS PRESSURE WASHER!

SAFETY WARNINGS

1. NEVER alter or modify the equipment. Be sure any accessory items and system components being used will withstand the pressure developed. Use only genuine manufactured parts for repair of your pressure washer. Failure to do so can cause hazardous operating conditions and will VOID warranty.
2. NEVER make adjustments on machinery while the unit is connected to the engine without first removing the ignition cable from the spark plug. Turning over the machinery by hand during adjustment or cleaning might start the engine and machinery with it, causing serious injury to the operator.
3. Know how to stop and bleed pressures quickly. Be thoroughly familiar with controls.
4. Before servicing the unit, turn unit off, relieve the water pressure and allow the unit to cool down. Do not make repairs while the unit is running. Service in a clean, dry, flat area. Block the wheels to prevent the unit from moving. Be especially careful to properly dispose of any flammable materials.
5. After testing the machine, DO NOT leave the pressurized unit unattended. Shut off the unit and release trapped pressure before leaving.

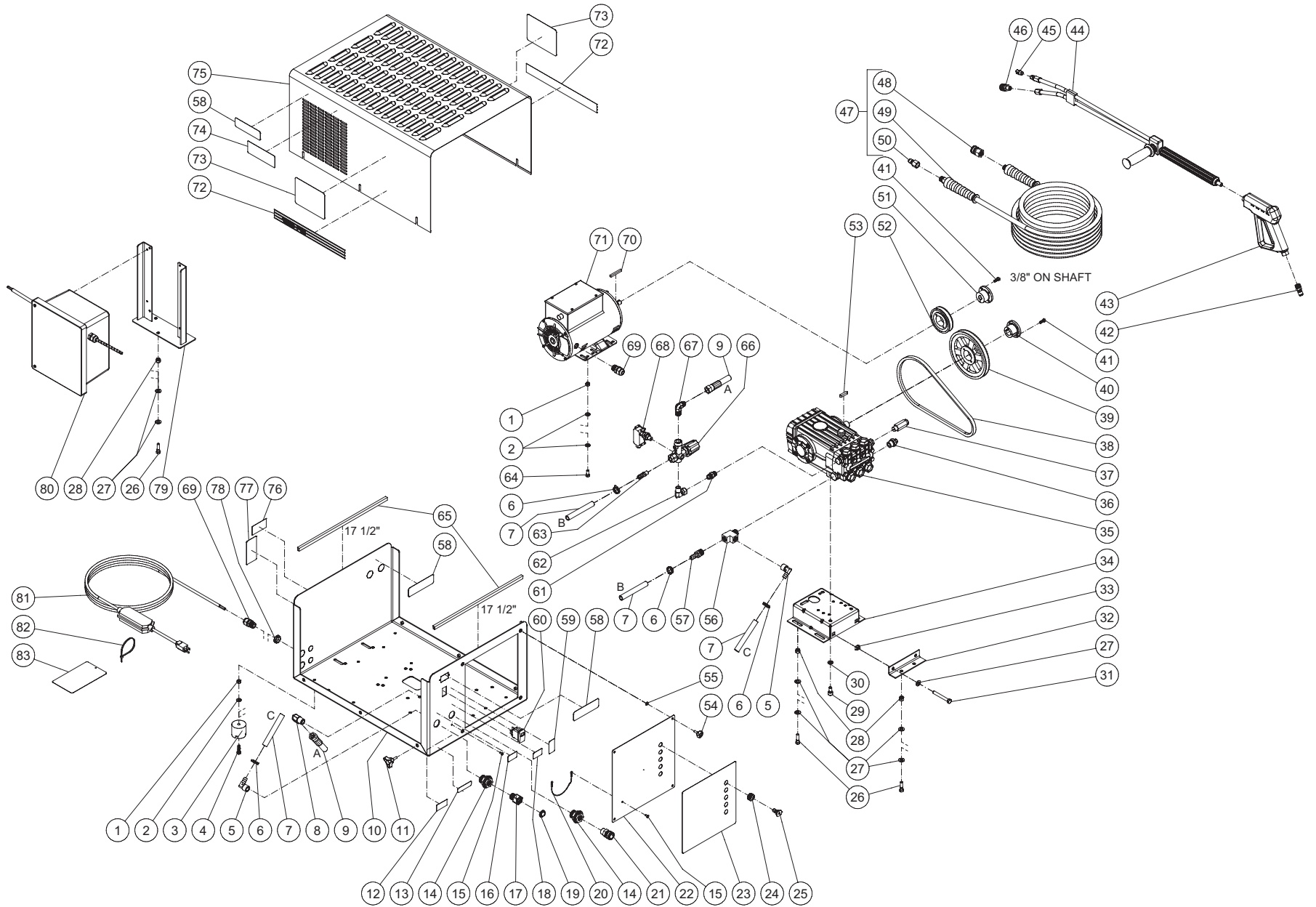
TABLE OF CONTENTS

SPECIFICATIONS.....	3
FRAME ASSEMBLY FOR 1003 (AFTER SERIAL #10165216).....	4
FRAME ASSEMBLY FOR 2004 AND 3004 (AFTER SERIAL #10165216).....	6
ELECTRIC BOX ASSEMBLY.....	8
ELECTRIC BOX ASSEMBLY.....	10
ELECTRIC BOX ASSEMBLY.....	12
PUMP ASSEMBLY (3-0202 AND 3-0203).....	14
DUAL LANCE ASSEMBLY (16-0416).....	16
DETERGENT INJECTOR (AW-8400-0021).....	18
1003_2004 115V-230V WIRING SCHEMATIC (AFTER SERIAL #10495457).....	20
1003_2004 115V-230V WIRING DIAGRAM (AFTER SERIAL #10495457).....	21
2004 WIRING SCHEMATIC (AFTER SERIAL #10495457).....	22
2004 WIRING DIAGRAM (AFTER SERIAL #10495457).....	23
WIRING SCHEMATIC - AUTO START/STOP, 1 PHASE (CX-0069) (AFTER SERIAL #10495457).....	24
WIRING DIAGRAM - AUTO START/STOP, 1 PHASE (CX-0069) (AFTER SERIAL #10495457).....	25
WIRING SCHEMATIC - AUTO START/STOP, 3 PHASE (CX-0069 AND CX-0076) (AFTER SERIAL #10495457).....	26
WIRING DIAGRAM - AUTO START/STOP, 3 PHASE (CX-0069 AND CX-0076) (AFTER SERIAL #10495457).....	27
WIRING SCHEMATIC - REMOTE BOX, 1 PHASE (CX-0078) (AFTER SERIAL #10495457).....	28
WIRING DIAGRAM - REMOTE BOX, 1 PHASE (CX-0078) (AFTER SERIAL #10495457).....	29
WIRE SCHEMATIC - REMOTE BOX 3 PHASE (CX-0078 AND CX-0076) (AFTER SERIAL #10495457).....	30
WIRE DIAGRAM - REMOTE BOX 3 PHASE (CX-0078 AND CX-0076) (AFTER SERIAL #10495457).....	31
WIRING SCHEMATIC - MULTI REMOTE BOX - 1 PHASE (CX-0078) (AFTER SERIAL #10495457).....	32
WIRING DIAGRAM - MULTI BOX - 1 PHASE (CX-0078) (AFTER SERIAL #10495457).....	33
WIRING SCHEMATIC - MULTI REMOTE BOX, 3 PHASE (CX-0078 AND CX-0076) (AFTER SERIAL #10495457).....	34
WIRING DIAGRAM - MULTI REMOTE BOX, 3 PHASE (CX-0078 AND CX-0076) (AFTER SERIAL #10495457).....	35
WIRING SCHEMATIC - AUTO START/STOP AND REMOTE BOX, 1 PHASE (AFTER SERIAL #10495457).....	36
WIRING DIAGRAM - AUTO START/STOP AND REMOTE BOX, 1 PHASE (AFTER SERIAL #10495457).....	37
WIRING SCHEMATIC - AUTO START/STOP AND REMOTE BOX 3 PHASE (CX-0076) (AFTER SERIAL #10495457).....	38
WIRING DIAGRAM - AUTO START/STOP AND REMOTE BOX 3 PHASE (CX-0076) (AFTER SERIAL #10495457).....	39
WIRING SCHEMATIC - AUTO START/STOP AND MULTI REMOTE BOX, 1 PHASE (AFTER SERIAL #10495457).....	40
WIRING DIAGRAM - AUTO START/STOP AND MULTI REMOTE BOX, 1 PHASE (AFTER SERIAL #10495457).....	41
WIRING SCHEMATIC - AUTO START/STOP AND MULTI REMOTE BOX, 3 PHASE (CX-0069 AND CX-0076) (AFTER SERIAL #10495457).....	42
WIRING DIAGRAM - AUTO START/STOP AND MULTI REMOTE BOX, 3 PHASE (CX-0069 AND CX-0076) (AFTER SERIAL #10495457).....	43

SPECIFICATIONS

MODEL NUMBER	1003	2004	3004
Operating Pressure (PSI/Bar):	1000/68.9	2000/137.9	3000/207
High Pressure Nozzle:	5.0	5.5	4.0
Water Volume (GPM/lpm):	2.5/9.5	3.9/14.8	3.5/13.2
Motor:	Open drip proof, manual reset thermal overload protection, ground fault circuit interrupter (GFCI)	Totally enclosed fan cooled, manual reset thermal overload protection, ground fault circuit interrupter (GFCI)	Open drip proof, manual reset thermal overload protection,
Horsepower	2.0	6.0	8.0
Voltage	120	230/460	
RPM	1725		
Phase	Single	Three	
Amps	18.8	22.1/11.1	15/7.5 20/10
Pump:	Belt Driven, Oil Bath, Triplex Piston		
Oil Type	Pump Oil #AW-4085-0016		
Oil Capacity (oz./liters)	41/1.2		
Plungers	Ceramic		
Manifold	Forged Brass		
Valves	Stainless Steel		
Unloader	Pre-Set at the factory		
Thermal Relief Valve	Relieves heated water during unloader bypass stage		
Detergent Injector	Adjustable low pressure down stream from pump		
Unit Net Dimension (in/cm)	29.5Lx20.5Wx15H/75Lx52Wx38H		
Unit Shipping Dimension (in/cm)	48Lx30Wx34H/122Lx76Wx86H		

FRAME ASSEMBLY FOR 1003 (AFTER SERIAL #10165216)

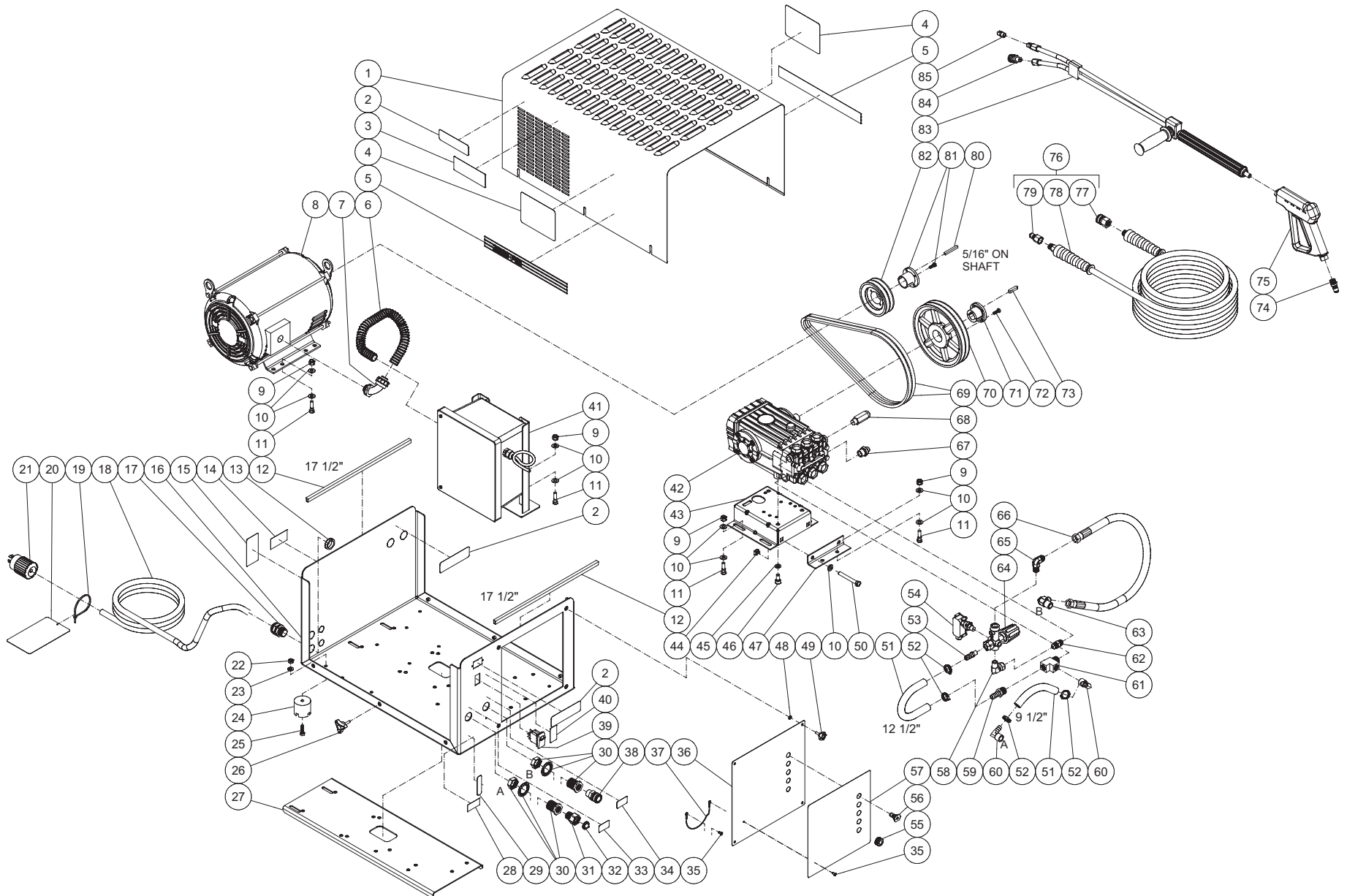


DC-1003-WSEIG 121317 ADR

FRAME ASSEMBLY								
ITEM	DESCRIPTION	PART #	QTY	ITEM	DESCRIPTION	PART #	QTY	
1	LOCKNUT	30-5158	8	42	QUICK CONNECT	17-0005	1	
2	WASHER	28-0122	12	43	GUN	16-0001	1	
3	ISOLATOR	14-0008	4	44	DUAL LANCE	16-0416	1	
4	BOLT	27-5024	4	45	NOZZLE 4060 1/4"	18-0110	1	
5	HOSE BARB	23-0418	2	46	QC SOCKET	17-0028	1	
6	HOSE CLAMP	42-0011	4	47	HOSE	851-0262	1	
7	HOSE *(TWO FEET REQUIRED)	15-0007	1	48	QC SOCKET	17-0004	1	
8	90° ELBOW FITTING	24-0074	1	49	HOSE	15-0146	1	
9	HIGH PRESSURE HOSE ASSEMBLY	15-0221	1	50	QUICK CONNECT	17-0006	1	
10	FRAME - CW STATIONARY - SS	21-0193	1	51	BUSHING	9-0037	1	
11	KNOB	7-0168	6	52	SHEAVE	10-0049	1	
12	DECAL - MADE IN USA	34-3553	1	53	PUMP KEY	43-0048	1	
13	DECAL - WARNING POTABLE WATER (E/S)	N/A	1	54	KNOB	62-0057	4	
14	ADAPTER	23-0365	2	55	NYLON RETAINING WASHER	28-1045	4	
15	RIVET	53-0009	2	56	TEE	23-0124	1	
16	DECAL-INLET (E/S)	N/A	1	57	BARB	23-0045	1	
17	SWIVEL	23-0095	1	58	DECAL - RISK OF INJURY	N/A	3	
18	DECAL - OUTLET	N/A	1	59	DECAL - ON/OFF	N/A	1	
19	FILTER	19-0001	1	60	SWITCH	32-0801	1	
20	LANYARD-12" LONG	33-0424	1	61	NIPPLE	24-0002	1	
21	QUICK CONNECT SOCKET	17-0029	1	62	ELBOW	24-0046	1	
22	SERVICE PANEL SS	21-0194	1	63	HOSE BARB	23-0120	1	
23	DECAL - SERVICE PANEL	N/A	1	64	BOLT	27-5066	4	
24	GROMMET	33-0002	5	65	EDGING *(THREE FEET REQUIRED)	33-0020	1	
25	NOZZLE	18-0406	1	66	UNLOADER	8-0361	1	
-	NOZZLE	18-0407	1	67	ELBOW	24-0092	1	
-	NOZZLE	18-0408	1	68	PRESSURE SWITCH	22-0171	1	
-	NOZZLE	18-0409	1	69	STRAIN RELIEF	32-0437	2	
26	BOLT	27-9563	9	70	KEY	43-0078	1	
27	WASHER	28-0123	20	71	MOTOR	2-0119	1	
28	NUT	30-5159	9	72	DECAL - STRIPE	N/A	2	
29	BOLT	27-8471	4	73	DECAL - LOGO	N/A	2	
30	LOCKWASHER	29-0055	4	74	DECAL-CAUT:HOT SUR/HOT DIS E/S	N/A	1	
31	BOLT	27-0576	2	75	HOOD - SS	21-0195	1	
32	TENSION BRACKET	20-0584A18	1	76	DECAL	N/A	1	
33	CLIP NUT	30-6025	2	77	DECAL- SILVER STICKER	N/A	1	
34	PUMP HAT	5-0153A18	1	78	ELECTRICAL LOCKNUT	32-0108	1	
35	PUMP	3-0203	1	79	BRACKET	13-0227A01	1	
36	RELIEF VALVE	22-0371	1	80	ELECTRIC BOX ASSEMBLY	N/A	1	
37	SAFETY VALVE	22-0376	1	81	ELECTRIC CORD	32-0215	1	
38	BELT	11-0006	1	82	CABLE TIE	33-0022	1	
39	SHEAVE	10-0066	1	83	TAG - WARNING RISK OF ELECTROCUTION	N/A	1	
40	BUSHING	9-0017	1	-	DECAL SET - STATIONARY	71-1020	1	
41	BOLT	27-0015	4					

*MUST ORDER IN ONE FOOT LENGTHS

FRAME ASSEMBLY FOR 2004 AND 3004 (AFTER SERIAL #10165216)

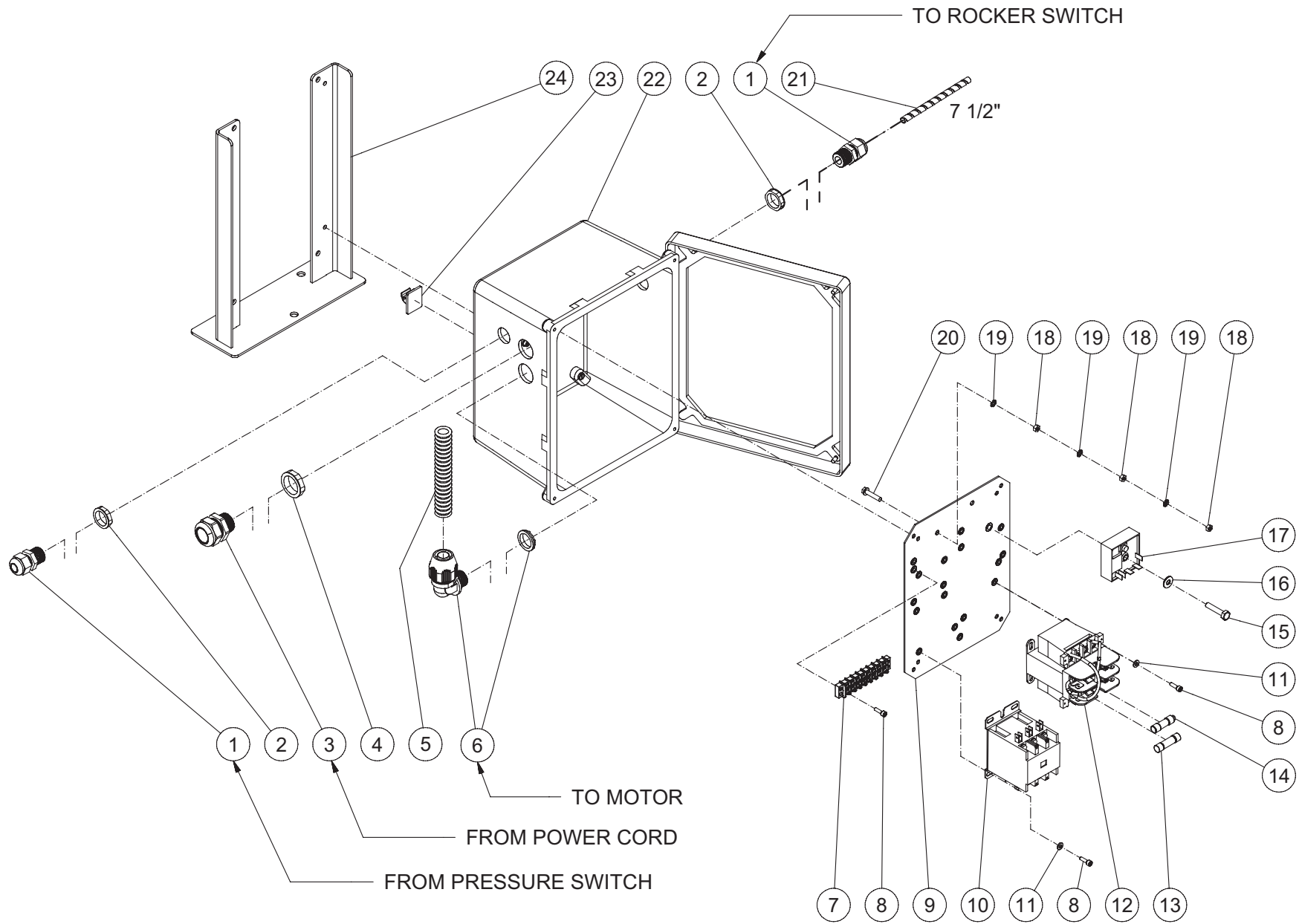


DC-2004_3004-WSE2G_3G 121317 ADR

FRAME ASSEMBLY							
ITEM	DESCRIPTION	PART #	QTY	ITEM	DESCRIPTION	PART #	QTY
1	HOOD	21-0195	1	45	LOCKWASHER	29-0055	4
2	DECAL - RISK OF INJURY	N/A	3	46	BOLT	27-8471	4
3	DECAL-CAUT: HOT SUR/HOT DIS E/S	N/A	1	47	TENSION BRACKET	20-0584A18	1
4	DECAL - LOGO	N/A	2	48	WASHER	28-1045	4
5	DECAL - 14" STRIPE	N/A	2	49	KNOB	62-0057	4
6	CONDUIT (3004)	32-0486	1	50	BOLT	27-0576	2
-	CONDUIT (2004)	32-0486	1	51	HOSE	15-0007	1
-	CONDUIT (2004)	32-0253	1	52	HOSE CLAMP	42-0011	4
7	CONDUIT ELBOW (3004)	32-0487	1	53	HOSE BARB	23-0120	1
-	CONDUIT ELBOW (2004)	32-0254	1	54	PRESSURE SWITCH	22-0171	1
8	MOTOR - 8HP (3004)	2-0110	1	55	GROMMET	33-0002	5
-	MOTOR 6HP 208-230/460V 3PH (2004)	2-0091	1	56	NOZZLE (3004)	18-0397	1
-	MOTOR - 6HP 230V 1PH (2004)	2-0141	1	-	NOZZLE (3004)	18-0399	1
9	NUT	30-5159	13	-	NOZZLE (3004)	18-0400	1
10	WASHER	28-0123	28	-	NOZZLE (3004)	18-0401	1
11	BOLT	27-9563	13	-	NOZZLE 00055 QC (2004)	18-0410	1
12	EDGING *(THREE FEET REQUIRED)	33-0020	1	-	NOZZLE 15055 QC (2004)	18-0411	1
13	ELECTRICAL LOCKNUT	32-0292	1	-	NOZZLE 25055 QC (2004)	18-0412	1
14	DECAL	N/A	1	-	NOZZLE 40055 QC (2004)	18-0413	1
15	DECAL- SILVER STICKER	N/A	1	57	DECAL - SERVICE PANEL	N/A	1
16	FRAME	21-0193	1	58	ELBOW	24-0046	1
17	CORD RELIEF	9-0046	1	59	BARB	23-0045	1
18	CORD *(SEVEN FEET REQUIRED) (3004)	32-0023	1	60	HOSE BARB	23-0418	2
-	CORD *(SEVEN FEET REQUIRED) (2004) (THREE PHASE)	32-0025	1	61	TEE	23-0124	1
-	CORD *(SEVEN FEET REQUIRED) (2004) (SINGLE PHASE)	32-0334	1	62	NIPPLE	24-0002	1
19	CABLE TIE	33-0022	1	63	90° ELBOW FITTING	24-0074	1
20	TAG - WARNING RISK OF ELECTROCUTION	N/A	1	64	UNLOADER	8-0361	1
21	PLUG	32-0037	1	65	ELBOW	24-0092	1
-	PLUG	32-0118	1	66	HOSE	15-0221	1
-	PLUG	32-0117	1	-	HOSE	15-0007	1
22	LOCKNUT	30-5158	4	67	RELIEF VALVE	22-0371	1
23	WASHER	28-0122	4	68	SAFETY VALVE	22-0376	1
24	ISOLATOR	14-0008	4	69	BELT (3004)	11-0030	2
25	BOLT	27-5024	4	-	BELT (2004)	11-0031	2
26	KNOB	7-0168	6	70	SHEAVE (3004)	10-0007	1
27	PLATE	21-0240	1	-	SHEAVE (2004)	10-0104	1
28	DECAL - MADE IN USA	34-3553	1	71	BUSHING	9-0017	1
29	DECAL - WARNING POTABLE WATER (E/S)	N/A	1	72	BOLT	27-0015	4
30	ADAPTER	23-0365	2	73	KEY	43-0048	1
31	SWIVEL	23-0095	1	74	QUICK CONNECT	17-0005	1
32	FILTER	19-0001	1	75	GUN	16-0001	1
33	DECAL - INLET (E/S)	N/A	1	76	HIGH PRESSURE HOSE ASSEMBLY (Inc 75-77)	851-0262	1
34	DECAL - OUTLET	N/A	1	77	QC SOCKET	17-0004	1
35	RIVET	53-0009	2	78	HOSE	15-0146	1
36	SERVICE PANEL	21-0194	1	79	QUICK CONNECT	17-0006	1
37	LANYARD	33-0424	1	80	KEY	43-0078	1
38	QUICK CONNECT SOCKET	17-0029	1	81	BUSHING (3004)	9-0008	1
39	SWITCH	32-0801	1	-	BUSHING (2004)	9-0010	1
40	DECAL - ON/OFF	N/A	1	82	SHEAVE (3004)	10-0030	1
41	ELECTRIC BOX ASSY (2004)	N/A	1	-	SHEAVE (2004)	10-0067	1
-	ELECTRIC BOX ASSY 8HP 3Ø 230-480V (3004)	N/A	1	83	DUAL LANCE	16-0416	1
-	ELECTRIC BOX ASSEMBLY 6 HP 1Ø (2004)	N/A	1	84	QC SOCKET	17-0028	1
42	PUMP	3-0202	1	85	NOZZLE	18-0110	1
43	PUMP HAT	5-0153A18	1	-	DECAL SET (2004)	71-1021	1
44	CLIP NUT	30-6025	2	-	DECAL SET (3004)	71-1022	1

*MUST ORDER IN ONE FOOT LENGTHS

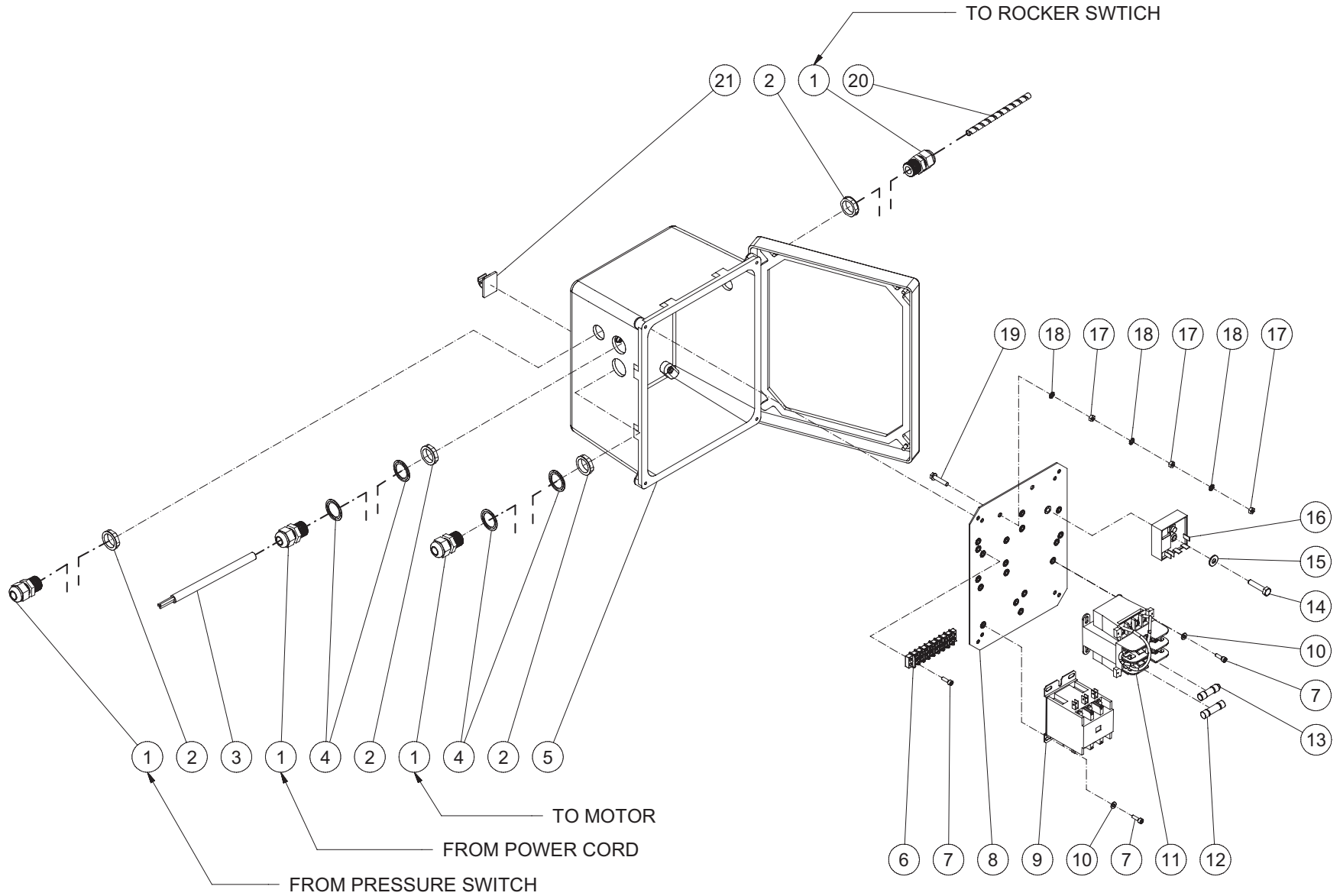
ELECTRIC BOX ASSEMBLY



SME_WSE 1PH 230V E-BOX ASSY 121317 ADR

SME_WSE 1PH 120V E-BOX ASSY 121317 ADR			
FRAME ASSEMBLY			
ITEM	TITLE	PART #	QTY
1	STRAIN RELIEF	32-0437	2
2	ELECTRICAL LOCKNUT	32-0108	2
3	CORD RELIEF	9-0046	1
4	ELECTRICAL LOCKNUT	32-0292	1
5	CONDUIT FLEX *(TWO FEET REQUIRED)	32-0253	1
6	CONDUIT ELBOW	32-0254	1
7	TERMINAL STRIP	32-0436	1
8	SCREW	27-8835	6
9	CONTROL PANEL	20-0723A06	1
10	CONTACTOR	32-0810	1
11	WASHER	28-0010	4
12	TRANSFORMER	32-0324	1
13	FUSE	32-1055	1
14	FUSE	32-0467	2
15	BOLT	27-0017	1
16	WASHER	28-0002	1
17	TIMER SWITCH	32-0800	1
18	NUT	30-6001	3
19	STAR WASHER	28-1009	3
20	BOLT	27-8807	1
21	WRAP *(ONE FOOT REQUIRED)	33-0114	1
22	ELECTRICAL BOX	32-0799	1
23	WIRE CLIP	33-0264	1
24	BRACKET	13-0227A01	1
*MUST ORDER IN ONE FOOT LENGTHS			

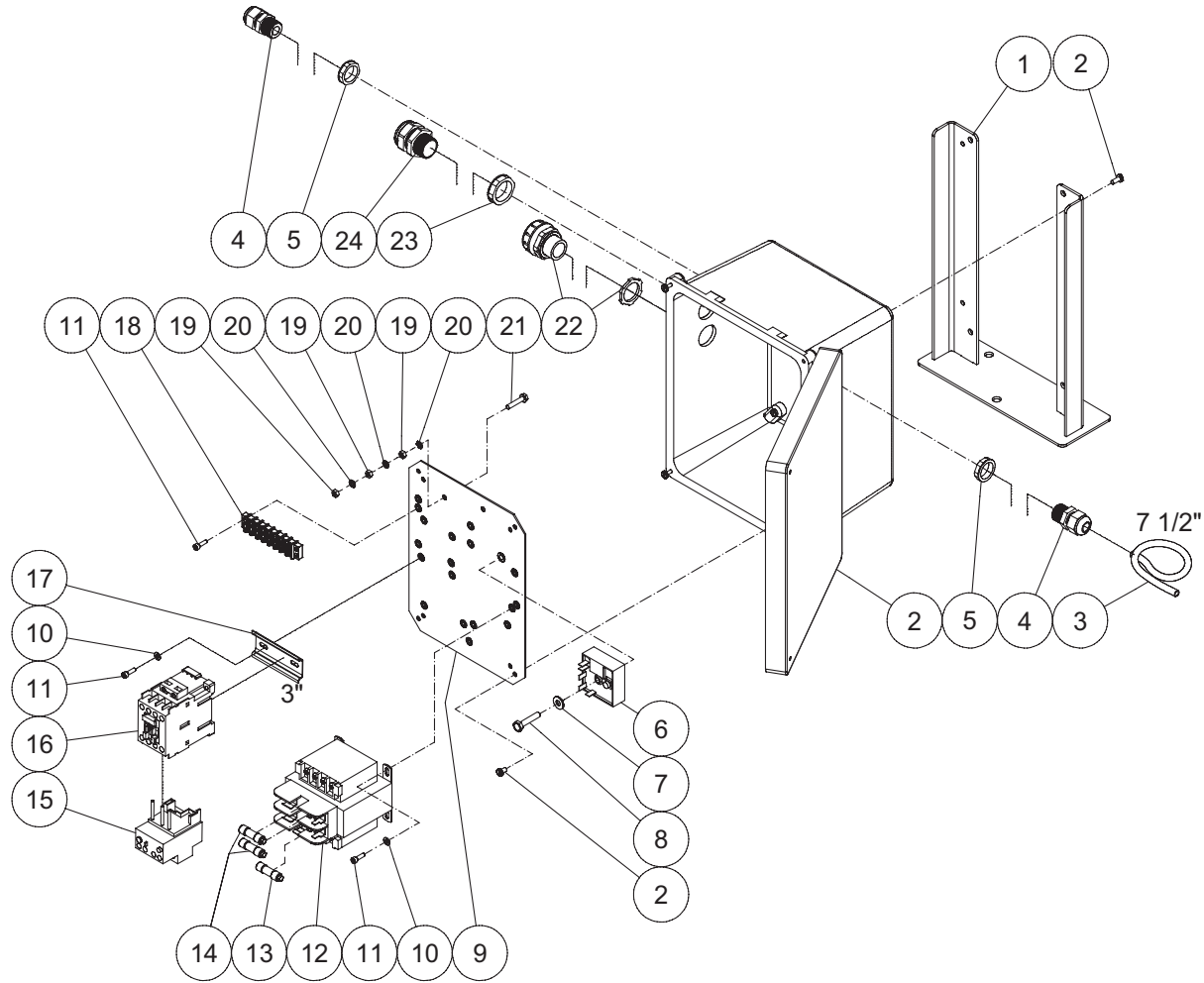
ELECTRIC BOX ASSEMBLY



SME_WSE 1PH 120V E-BOX ASSY 121317.ADR

SME_WSE 1PH 120V E-BOX ASSY 121317 ADR			
ELECTRIC BOX ASSEMBLY			
ITEM	TITLE	PART #	QTY
1	STRAIN RELIEF	32-0437	4
2	ELECTRICAL LOCKNUT	32-0108	4
3	CORD *(TWO FEET REQUIRED)	32-0440	1
4	WASHER	32-0814	4
5	ELECTRICAL BOX	32-0799	1
6	TERMINAL STRIP	32-0436	1
7	SCREW	27-8835	6
8	CONTROL PANEL	20-0723A06	1
9	CONTACTOR	32-0810	1
10	WASHER	28-0010	4
11	TRANSFORMER	32-0324	1
12	FUSE	32-1055	1
13	FUSE 0.5A	32-0467	2
14	BOLT	27-0017	1
15	WASHER	28-0002	1
16	TIMER SWITCH	32-0800	1
17	NUT	30-6001	3
18	STAR WASHER	28-1009	3
19	BOLT	27-8807	1
20	WRAP *(ONE FOOT REQUIRED)	33-0114	1
21	WIRE CLIP	33-0264	1
*MUST ORDER IN ONE FOOT LENGTHS			

ELECTRIC BOX ASSEMBLY

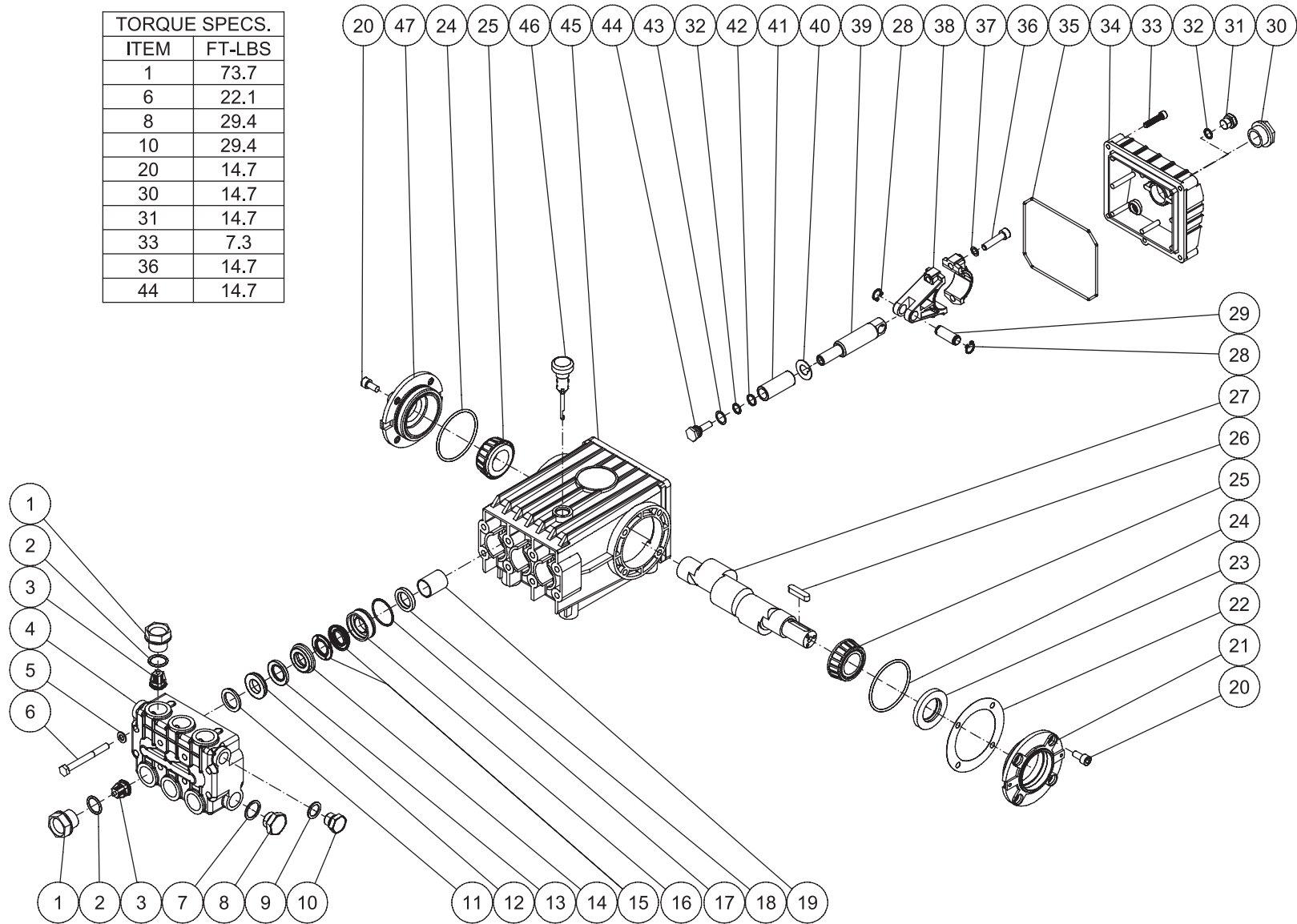


SME_WSE 3PH E-BOX ASSY 121317 ADR

SME_WSE 3PH E-BOX ASSY 121317 ADR			
ELECTRIC BOX ASSEMBLY			
ITEM	DESCRIPTION	PART #	QTY
1	BRACKET	13-0227A01	1
2	ELECTRICAL BOX	32-0799	1
3	WRAP *(ONE FOOT REQUIRED)	33-0114	1
4	STRAIN RELIEF	32-0437	2
5	ELECTRICAL LOCKNUT	32-0108	2
6	TIMER SWITCH	32-0800	1
7	WASHER	28-0002	1
8	BOLT	27-0017	1
9	CONTROL PANEL	20-0723A06	1
10	WASHER	28-0010	4
11	SCREW	27-8835	6
12	TRANSFORMER	32-0735	1
13	FUSE	32-0743	1
14	FUSE (230V)	32-0740	2
-	FUSE (480V)	32-0467	2
15	OVERLOAD RELAY (2004-SME3 / CX-0076/77) (230V)	32-0482	1
-	OVERLOAD RELAY (CX-0076) (480V)	32-0481	1
-	OVERLOAD RELAY (3004-SME3 / CX-0077) (230V)	32-1076	1
16	CONTACTOR (2004-SME3)	32-0329	1
-	CONTACTOR (3004-SMES / CX-0077) (230V)	32-0597	1
-	CONTACTOR (CX-0077) (480V)	32-0327	1
17	DIN RAIL *(ONE FOOT REQUIRED)	32-0316	1
18	TERMINAL STRIP	32-0436	1
19	NUT	30-6001	3
20	STAR WASHER	28-1009	3
21	BOLT	27-8807	1
22	CONDUIT STRAIGHT	32-0488	1
23	ELECTRICAL LOCKNUT	32-0292	1
24	CORD RELIEF	9-0046	1
*MUST ORDER IN ONE FOOT LENGTHS			

PUMP ASSEMBLY (3-0202 AND 3-0203)

TORQUE SPECS.	
ITEM	FT-LBS
1	73.7
6	22.1
8	29.4
10	29.4
20	14.7
30	14.7
31	14.7
33	7.3
36	14.7
44	14.7

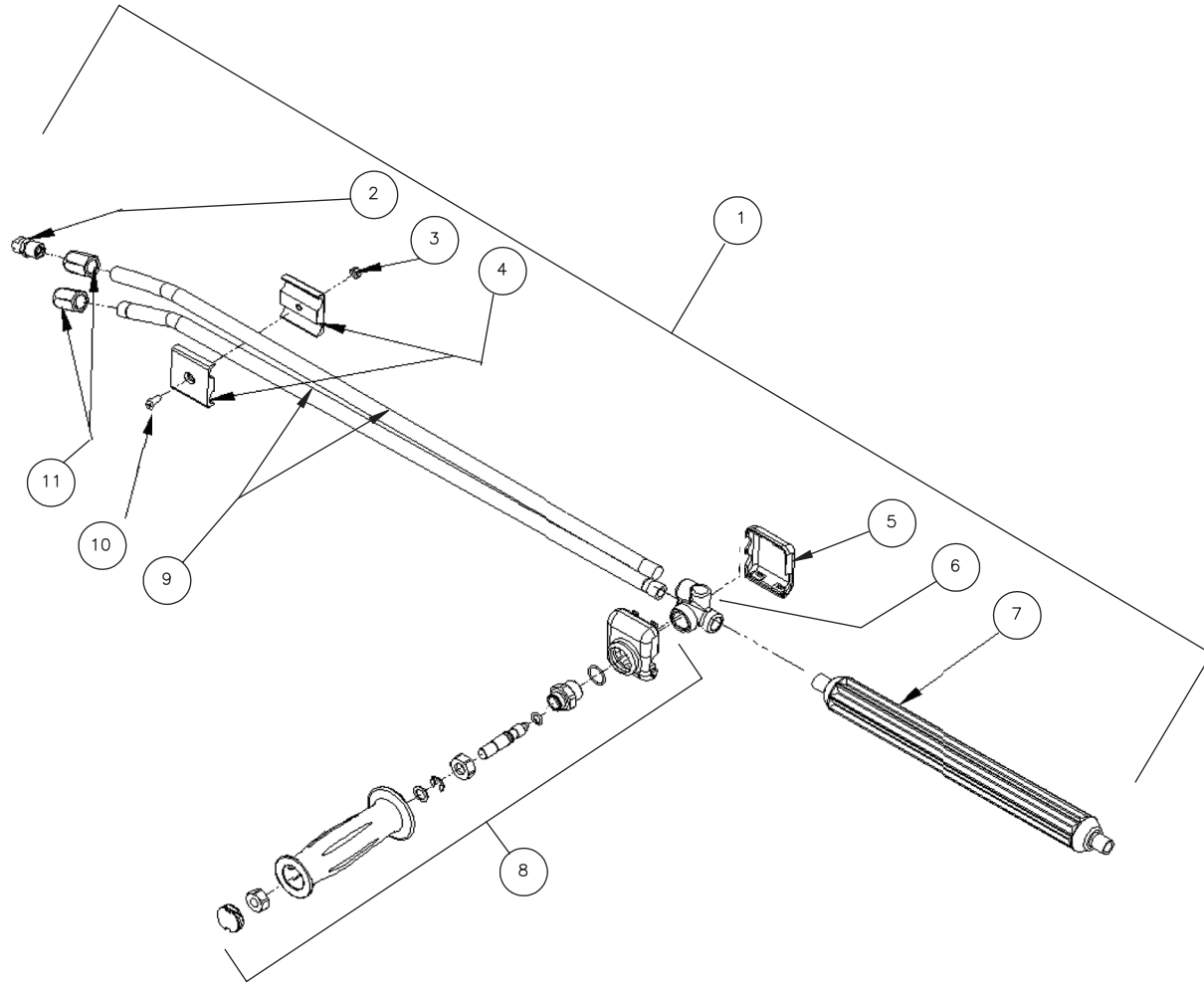


3-0202_3-0203 082713 JDK

PUMP ASSEMBLY							
ITEM	DESCRIPTION	PART #	QTY	ITEM	DESCRIPTION	PART #	QTY
1	VALVE CAP	46-0889	6	25	BEARING	48-0012	2
2	O-RING	25-0012	6	26	KEY	43-0048	1
3	VALVE (SEE KIT 70-0009)	SEE KIT	6	27	CRANKSHAFT	N/A	1
4	MANIFOLD	46-0890	1	28	RETAINING RING	46-0103	6
5	WASHER	28-1039	8	29	CONNECTING ROD PIN	43-0032	3
6	BOLT	27-8185	8	30	OIL LEVEL INDICATOR	46-0114	1
7	WASHER	28-1038	2	31	PLUG	39-0017	1
8	PLUG	39-0019	2	32	O-RING	25-0014	4
9	WASHER	28-1002	2	33	BOLT	27-8404	5
10	PLUG	39-0018	2	34	CRANKCASE OPEN COVER	46-0295	1
11	HEAD RING (SEE KIT 70-0030 AND 852-0122)	SEE KIT	3	35	O-RING	25-0339	1
12	V-PACKING SUPPORT (SEE KIT 70-0147 AND 852-0122)	SEE KIT	3	36	BOLT	27-8435	6
13	O-RING (SEE KIT 70-0147 AND 70-0148 AND 852-0122)	SEE KIT	3	37	LOCKWASHER	29-0154	6
14	HIGH PRESSURE INTERMEDIATE SEAL RETAINER (SEE KIT 70-0148)	SEE KIT	3	38	CONNECTING ROD	46-0051	3
15	PRESSURE SEAL (SEE KIT 70-0147 AND 852-0122)	SEE KIT	3	39	PISTON ROD	46-0056	3
16	LOW PRESSURE SEAL RETAINER	46-0057	3	40	SLINGER WASHER	46-0146	3
17	O-RING (SEE KIT 852-0122)	SEE KIT	3	41	PLUNGER	46-0052	3
18	OIL SEAL	26-0047	3	42	BACK-UP RING	46-0109	3
19	BUSHING	9-0029	3	43	WASHER	28-0400	3
20	BOLT	27-8431	8	44	NUT / PISTON	46-0069	3
21	CRANKCASE COVER	46-0296	1	45	CRANKCASE	46-0047	1
22	SHIM	46-0113	1	46	OIL DIP STICK	46-0144	1
23	OIL SEAL	26-0049	1	47	CRANKCASE COVER	46-0336	1
24	O-RING	25-0013	2				

REPLACEMENT KITS				
KIT#	DESCRIPTION	ITEMS	# OF ASSEMBLIES	# OF CYLINDERS
70-0009	VALVES	3	6	3
70-0030	HEAD RING	11	3	3
70-0147	V-PACKING	12, 13, 15	3	3
70-0148	INTERMEDIATE RETAINER	13, 14	3	3
852-0122	V-PACKING ASSY	11-13, 15, 17	3	3

DUAL LANCE ASSEMBLY (16-0416)

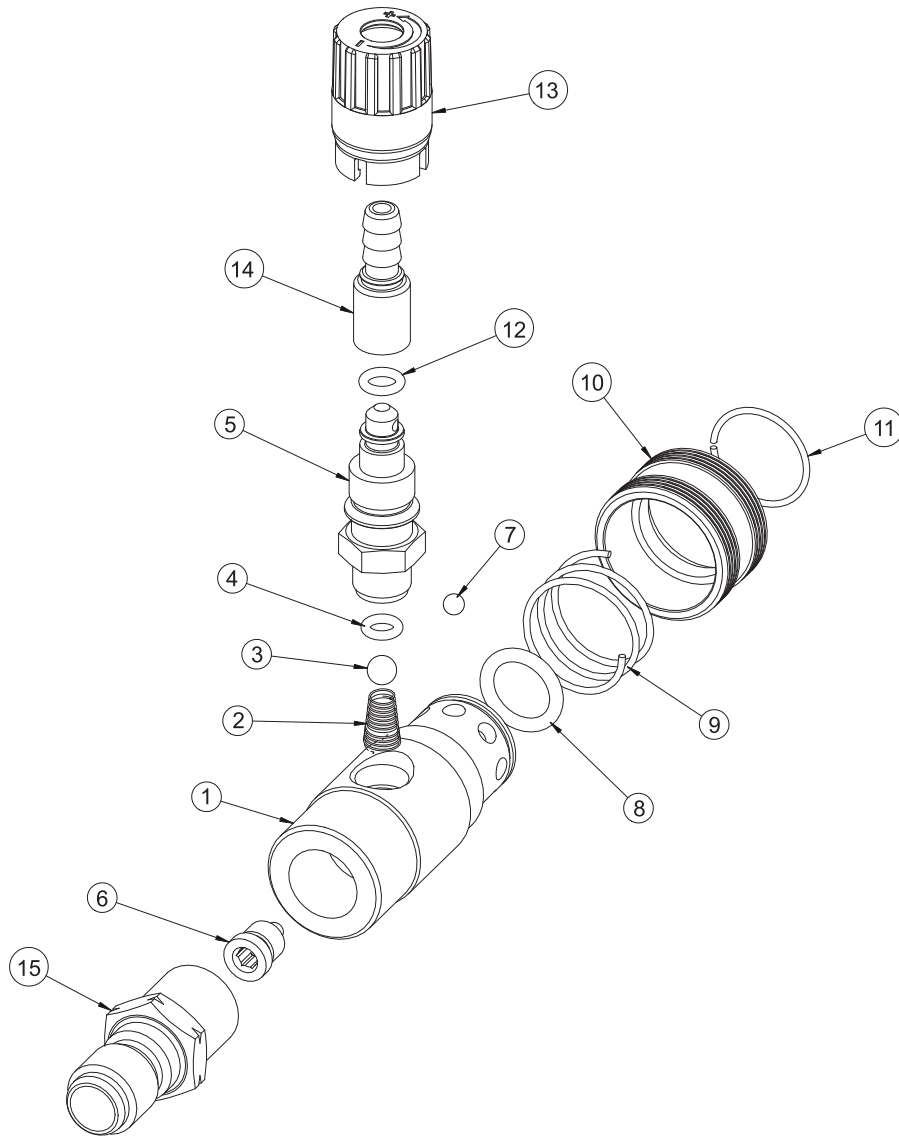


16-0416_16-0417-102405-RZ

DUAL LANCE ASSEMBLY (16-0416)			
REF. #	DESCRIPTION	PART #	QTY.
1	Dual Lance Assembly - 36" (Inc. 2-11)	16-0416	1
2	Detergent Nozzle	18-0110	1
3	Nut	30-6001	1
4	Clamp	16-0420	2
5	Lower Valve Cover (See 16-0416)	N/A Sep.	1
6	Housing (See 16-0416)	N/A Sep.	1
7	Lance	16-0419	1
8	Handle Repair Kit	70-0419	1
9	Lance (See 16-0416)	N/A Sep.	2
10	Screw	27-8196	1
11	Nozzle Adapter	24-0280	2

DETERGENT INJECTOR (AW-8400-0021)

AW-8400 ASSEMBLY

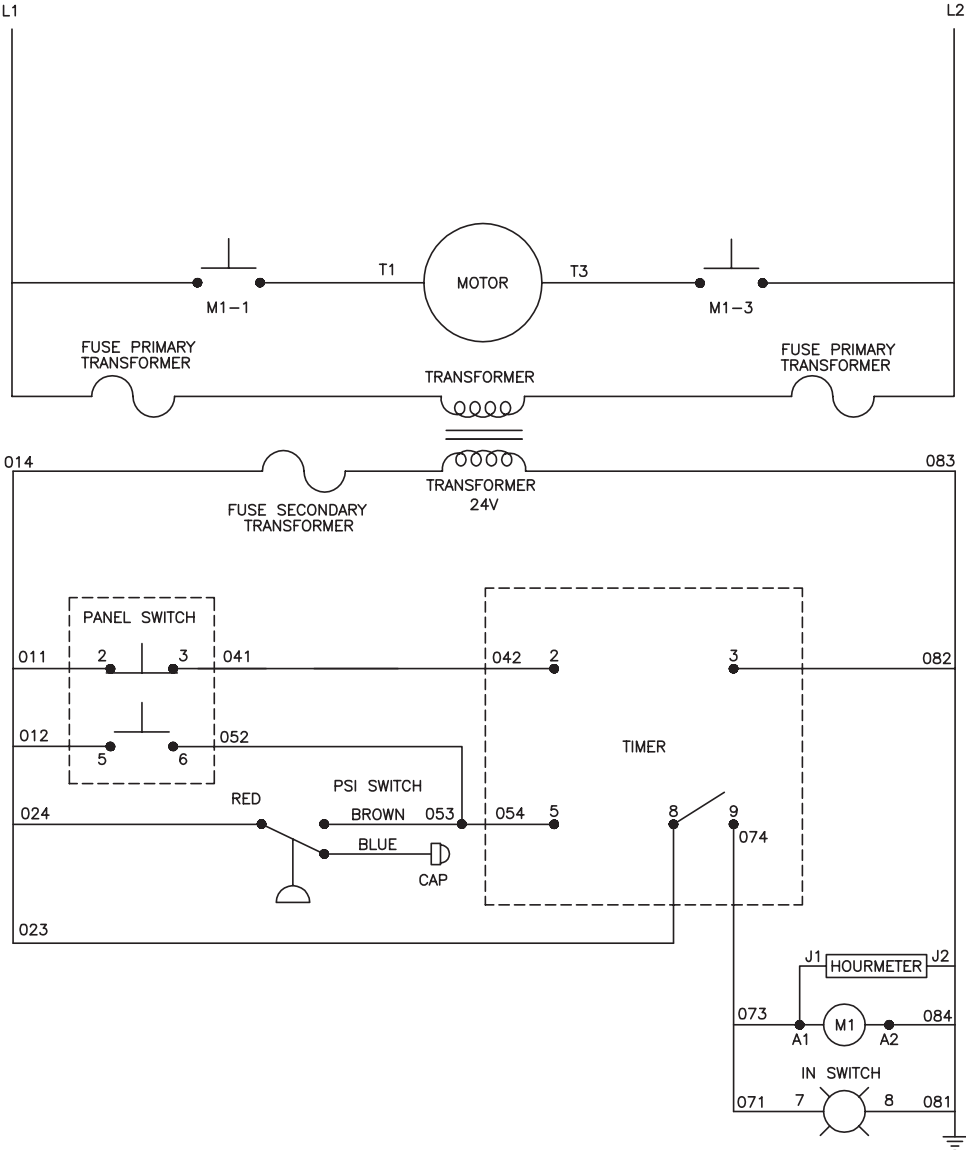


DETERGENT INJECTOR REPAIR KIT (70-0395)			
REF. #	DESCRIPTION	PART #	QTY.
1	Injector Housing	N/A	1
2	Spring (See 70-0395)	N/A Sep.	1
3	Injector Ball (See 70-0395)	N/A Sep.	1
4	O-ring (See 70-0395)	N/A Sep.	1
5	Hose Barb	N/A	1
6	Injector Nozzle	N/A	1
7	Ball	N/A	8
8	O-ring (See 70-0395)	N/A Sep.	1
9	Spring	N/A	1
10	Collar	N/A	1
11	Retaining Ring	N/A	1
12	O-ring (See 70-0395)	N/A Sep.	1
13	Adjustable Hose Barb Knob	N/A	1
14	Adjustable Hose Barb	N/A	1
15	Nipple	N/A	1
	Injector Repair Kit (Inc. 2, 3, 4, 8, 12)	70-0395	

AW-8400 ASSEMBLY-DCE

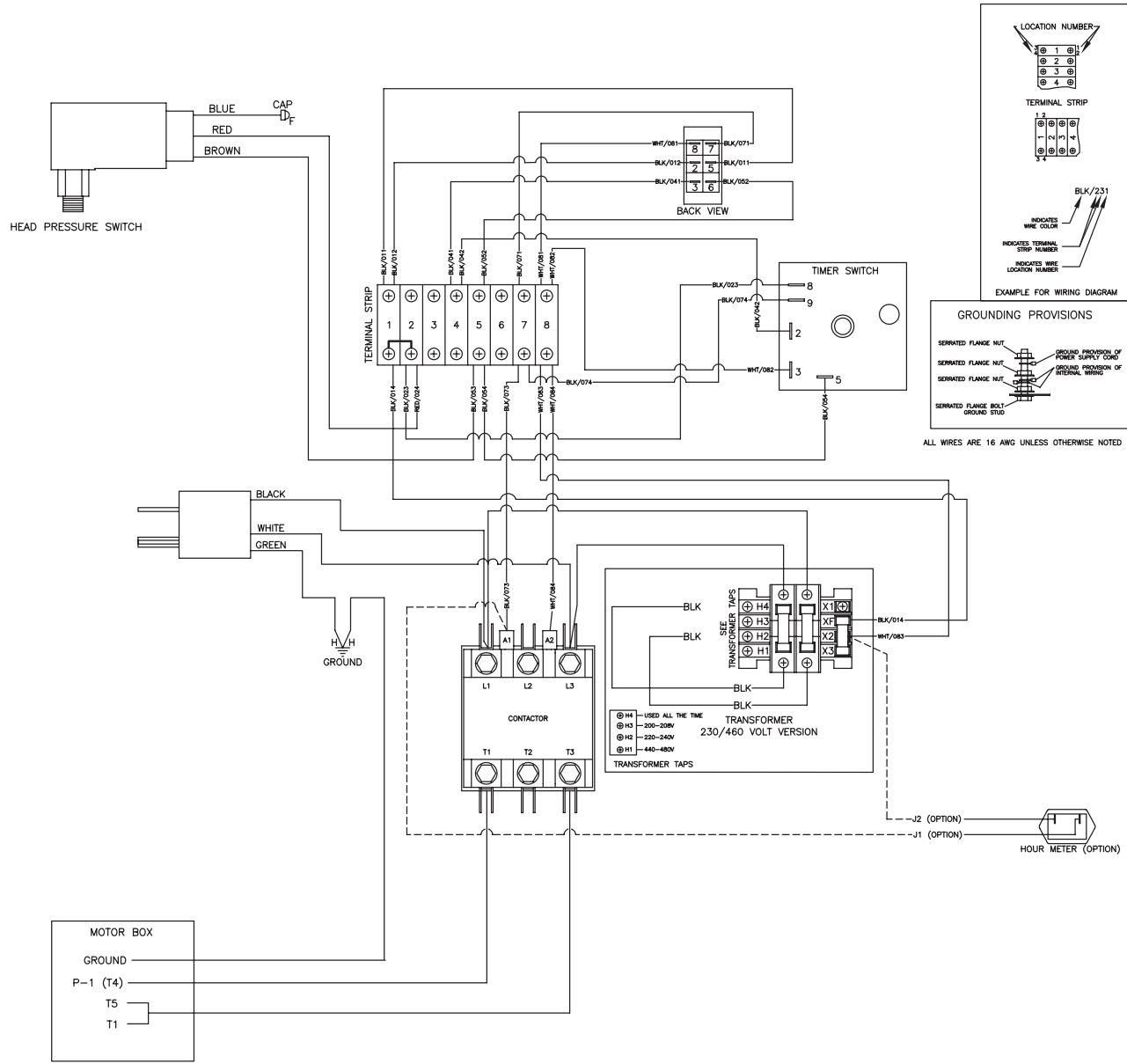
NOTES

1003_2004 115V-230V WIRING SCHEMATIC (AFTER SERIAL #10495457)



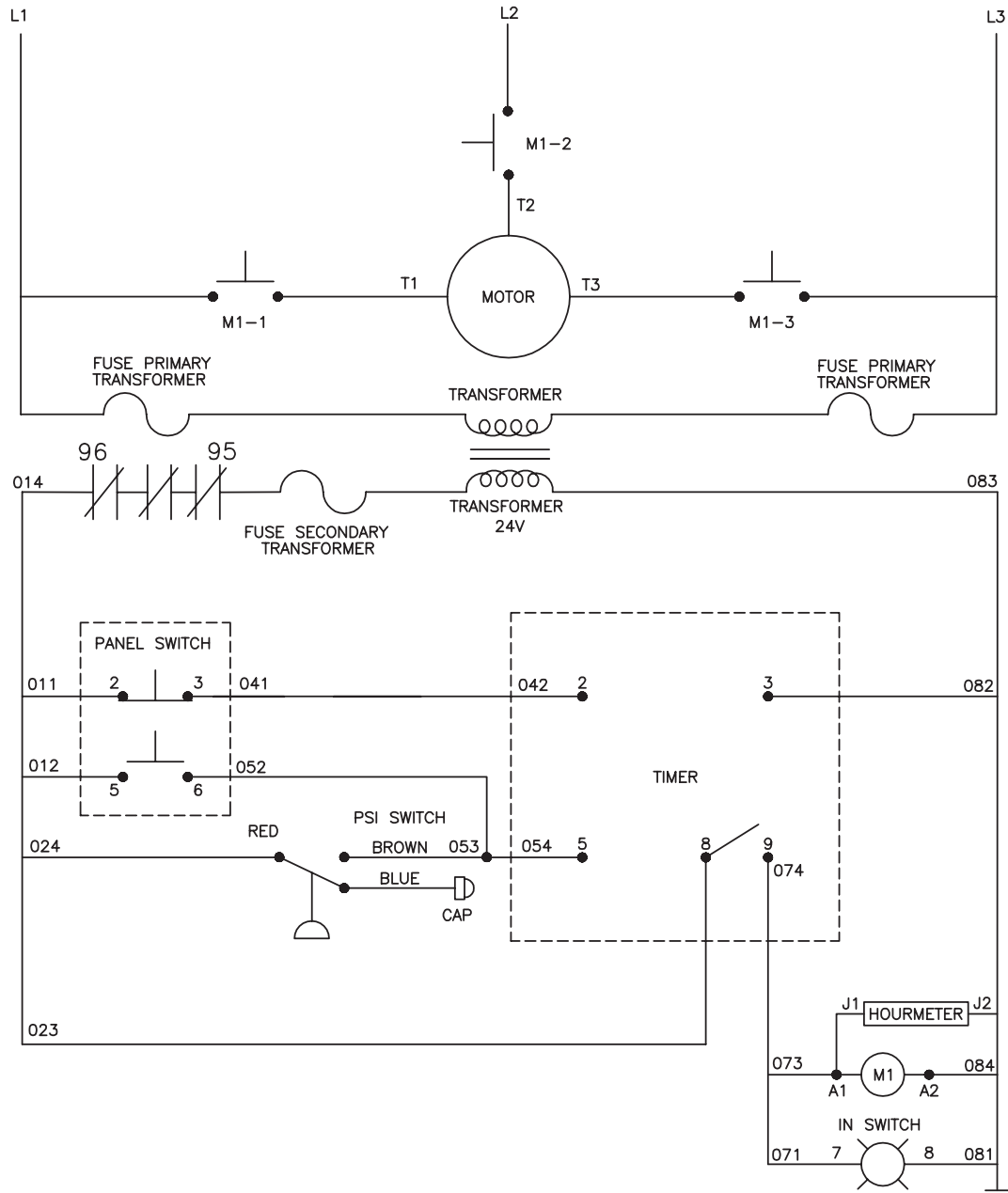
CW-1003-2004-SME1 115V-230V WIRE SHCEMATIC 110510

1003_2004 115V-230V WIRING DIAGRAM (AFTER SERIAL #10495457)



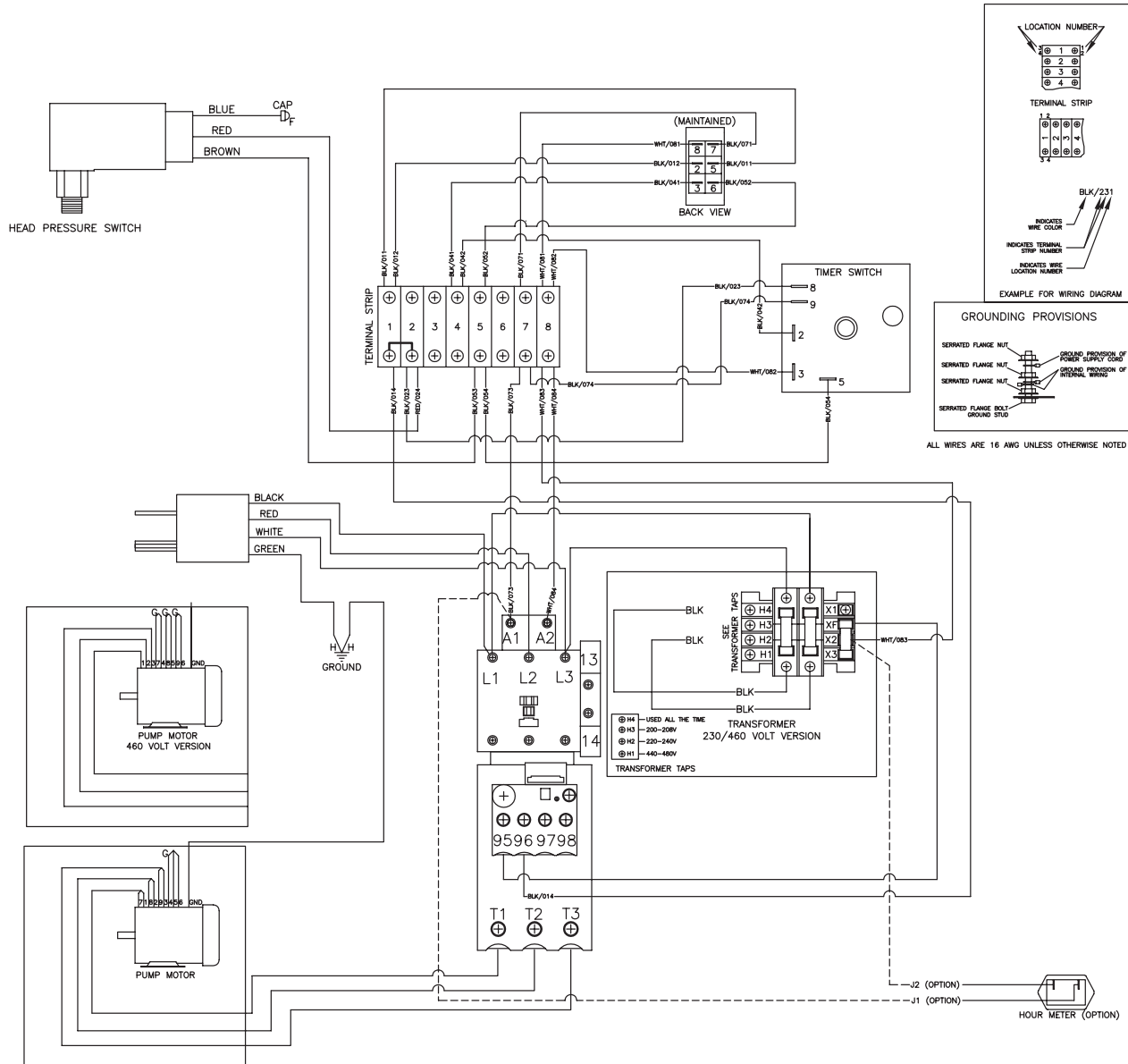
CW-1003-2004-SME1 115V-230V WIRE DIAGRAM 110510

2004 WIRING SCHEMATIC (AFTER SERIAL #10495457)

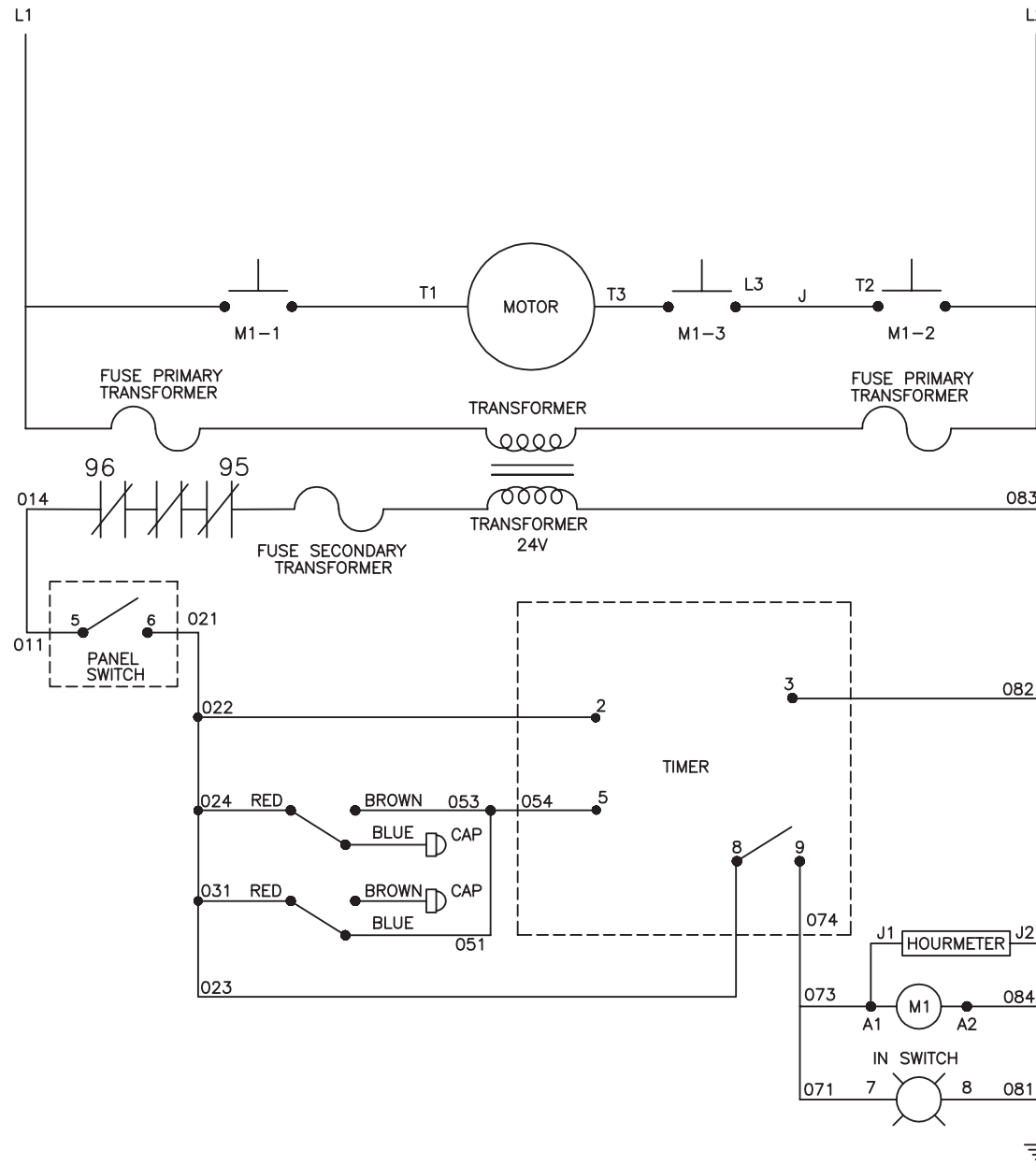


CW-2004-SME3 WIRE SCHEMATIC 110510

2004 WIRING DIAGRAM (AFTER SERIAL #10495457)

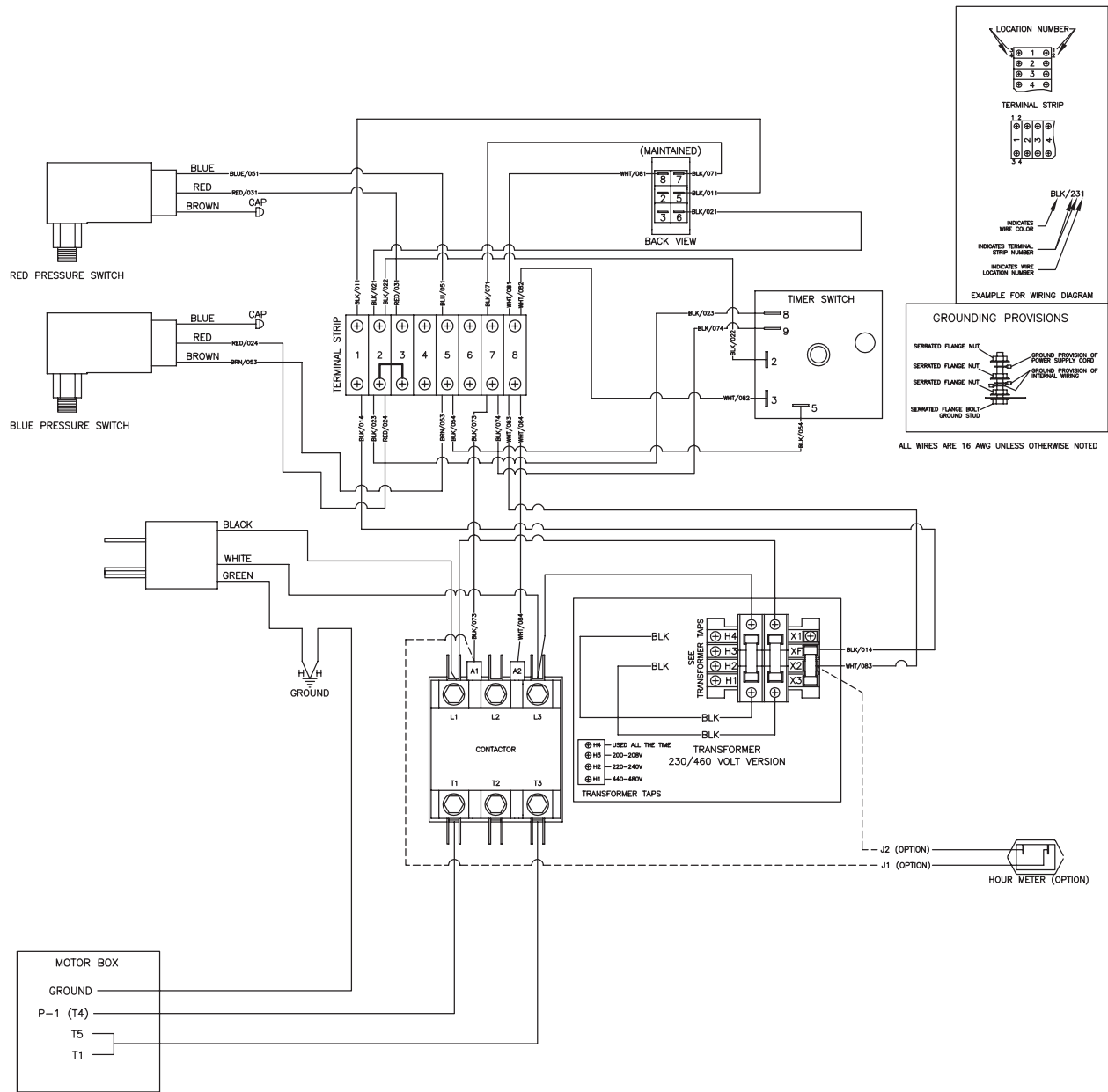


WIRING SCHEMATIC - AUTO START/STOP, 1 PHASE (CX-0069) (AFTER SERIAL #10495457)



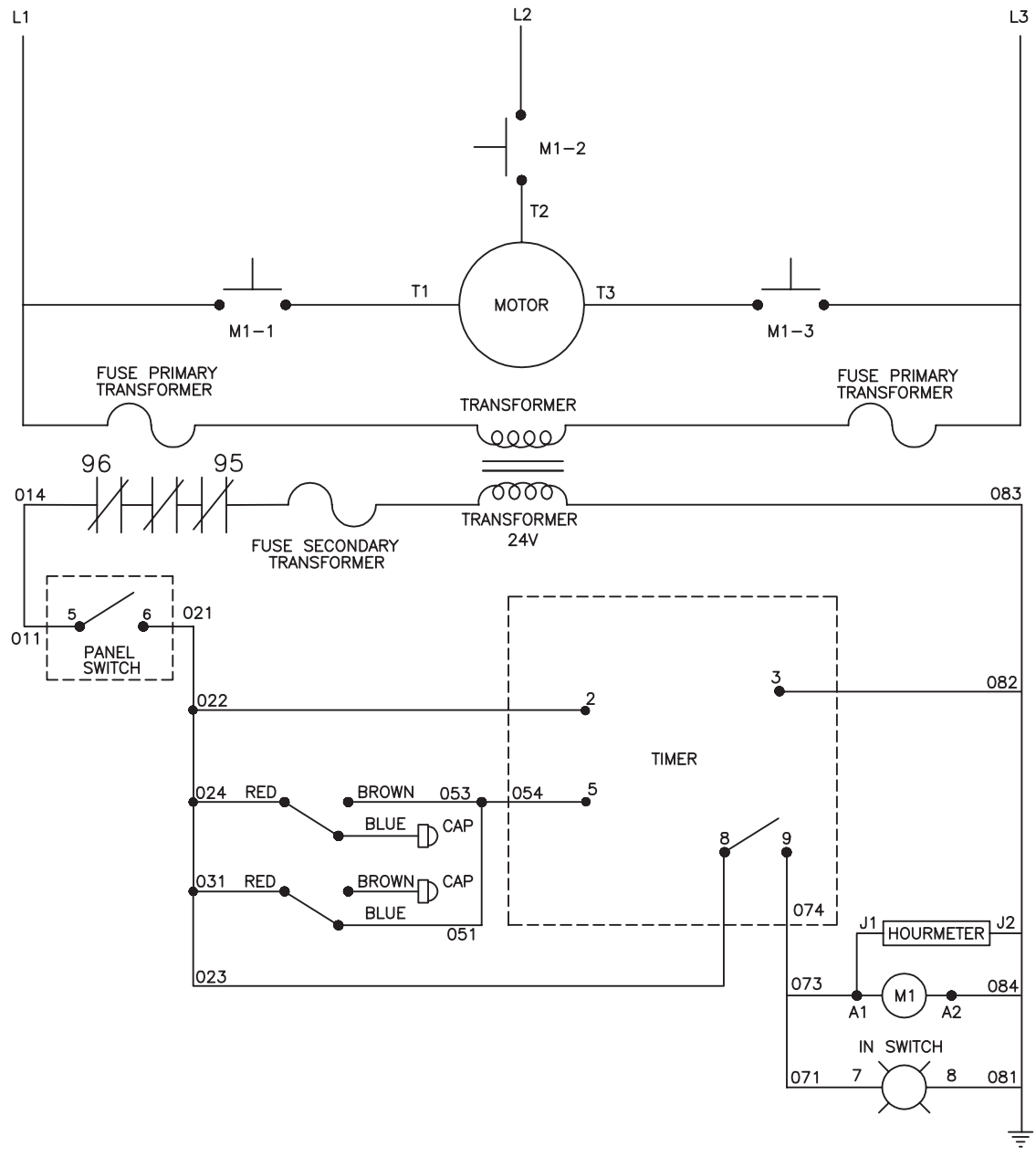
WIRE SCHEMATIC - AUTO SS 1 PHASE (CX-0069) 110510

WIRING DIAGRAM - AUTO START/STOP, 1 PHASE (CX-0069) (AFTER SERIAL #10495457)



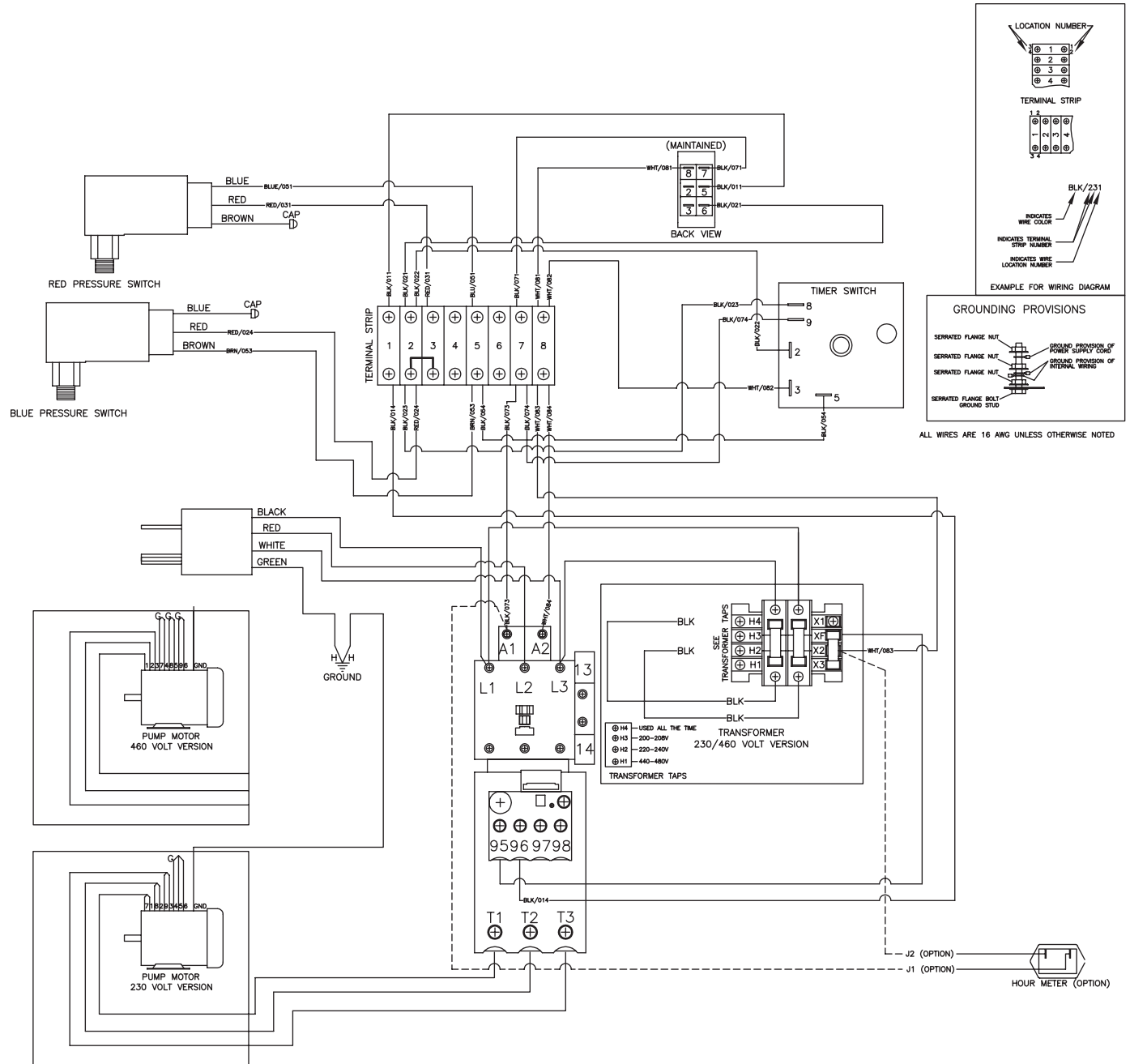
WIRE DIAGRAM - AUTO SS 1 PHASE (CX-0069) 110510

WIRING SCHEMATIC - AUTO START/STOP, 3 PHASE (CX-0069 AND CX-0076) (AFTER SERIAL #10495457)

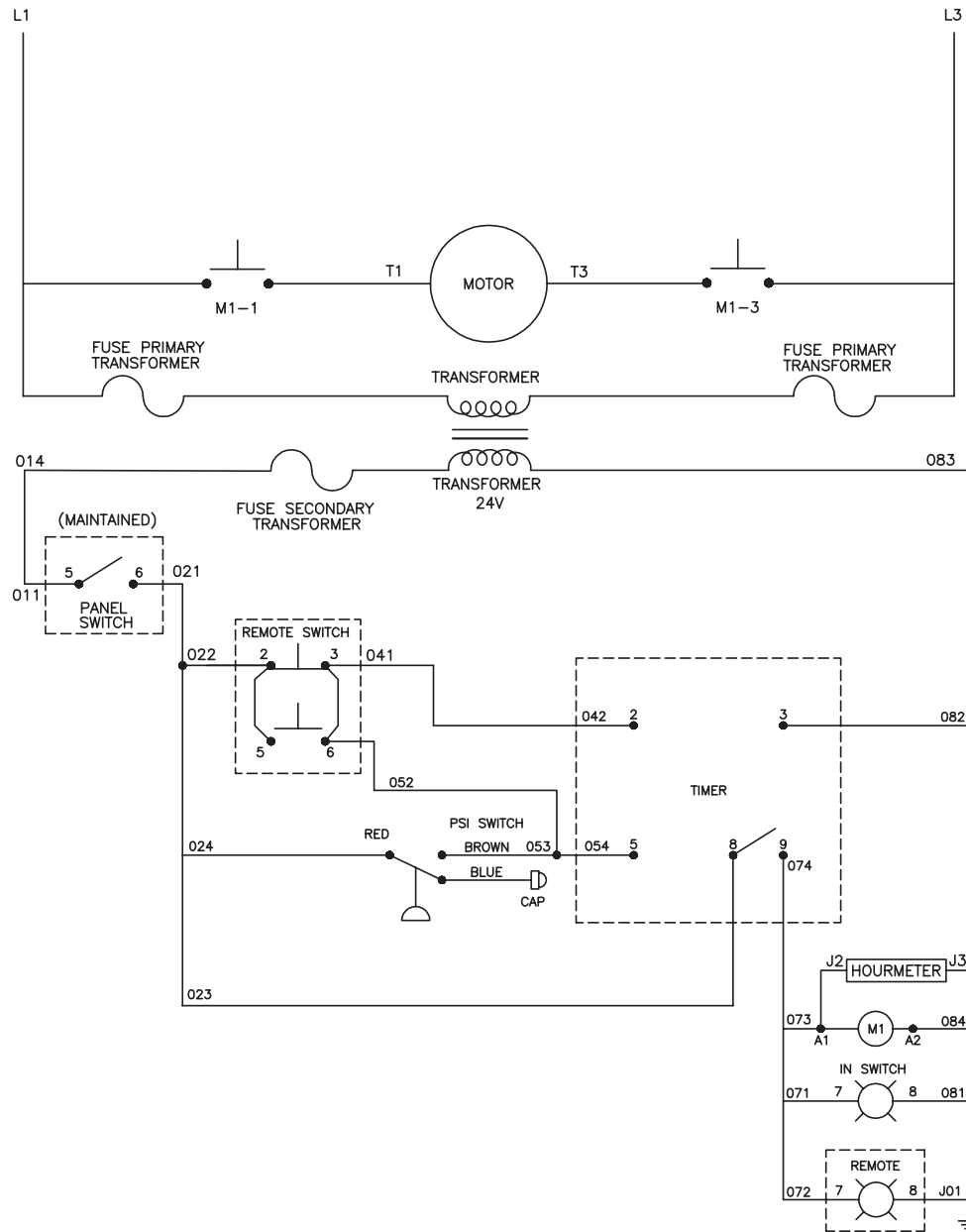


WIRE SCHEMATIC - AUTO SS 3 PHASE (CX-0069_CX-0076) 110510

WIRING DIAGRAM - AUTO START/STOP, 3 PHASE (CX-0069 AND CX-0076) (AFTER SERIAL #10495457)

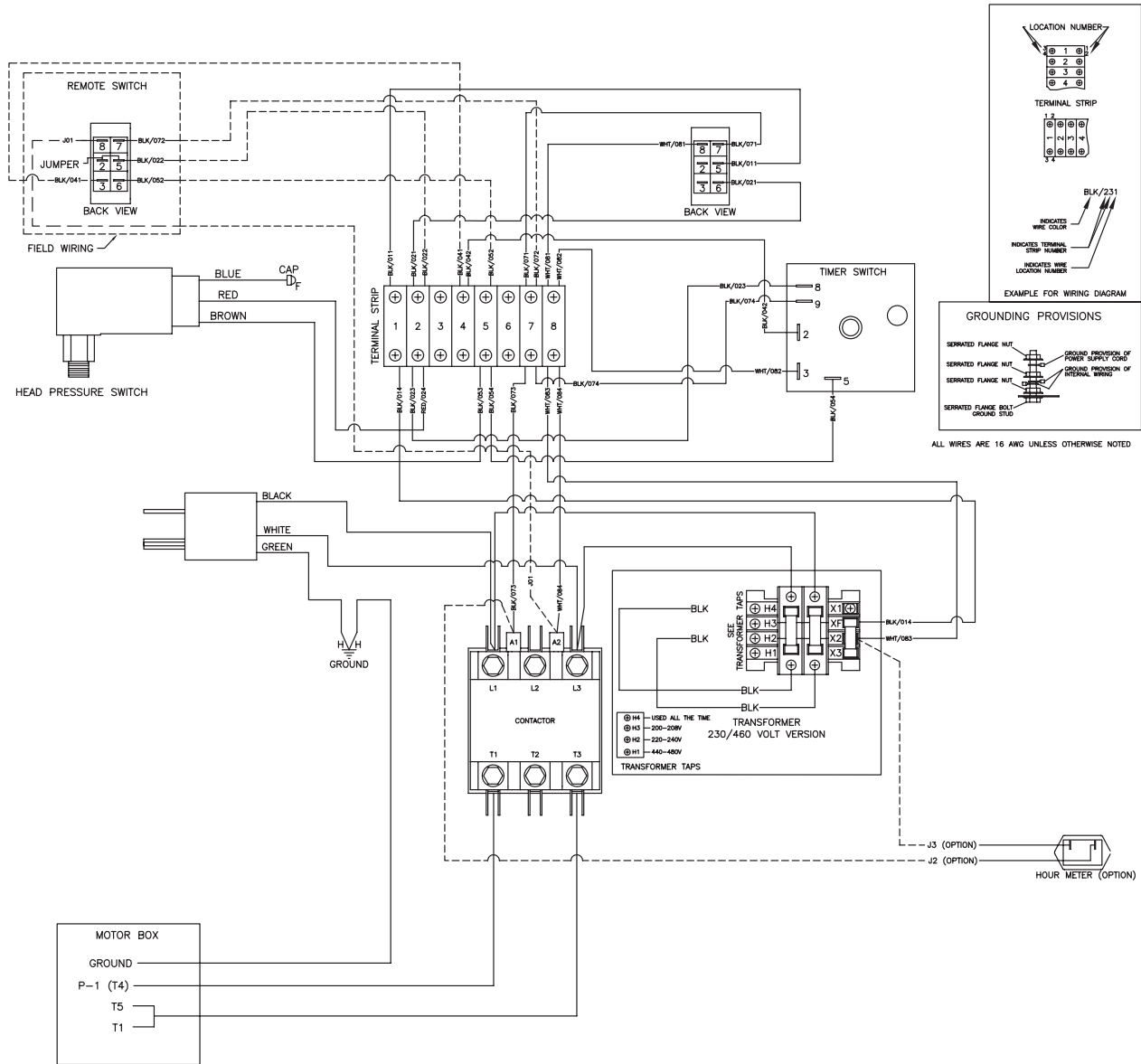


WIRING SCHEMATIC - REMOTE BOX, 1 PHASE (CX-0078) (AFTER SERIAL #10495457)



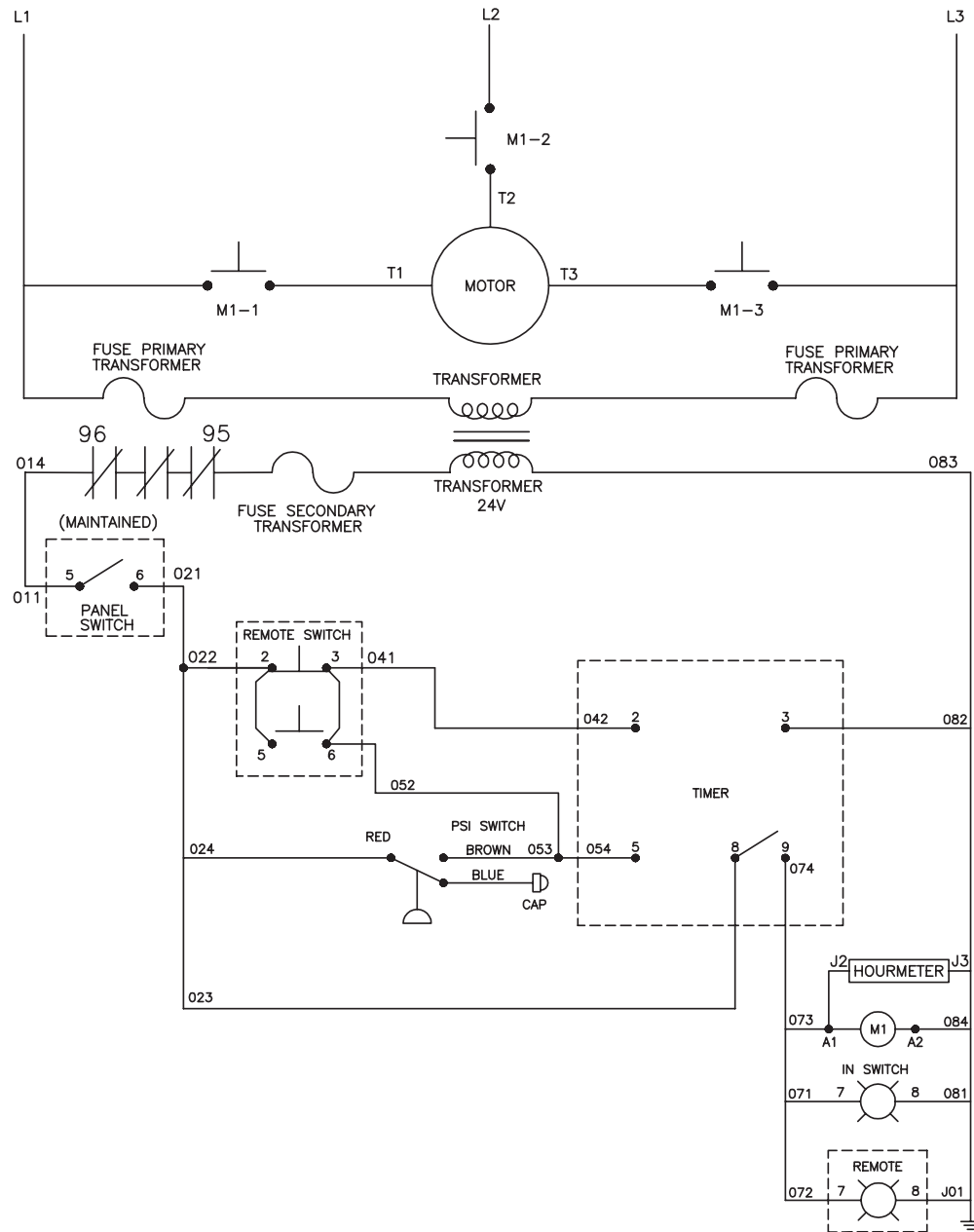
WIRE SCHEMATIC - RB 1 PHASE (CX-0078)_091813

WIRING DIAGRAM - REMOTE BOX, 1 PHASE (CX-0078) (AFTER SERIAL #10495457)



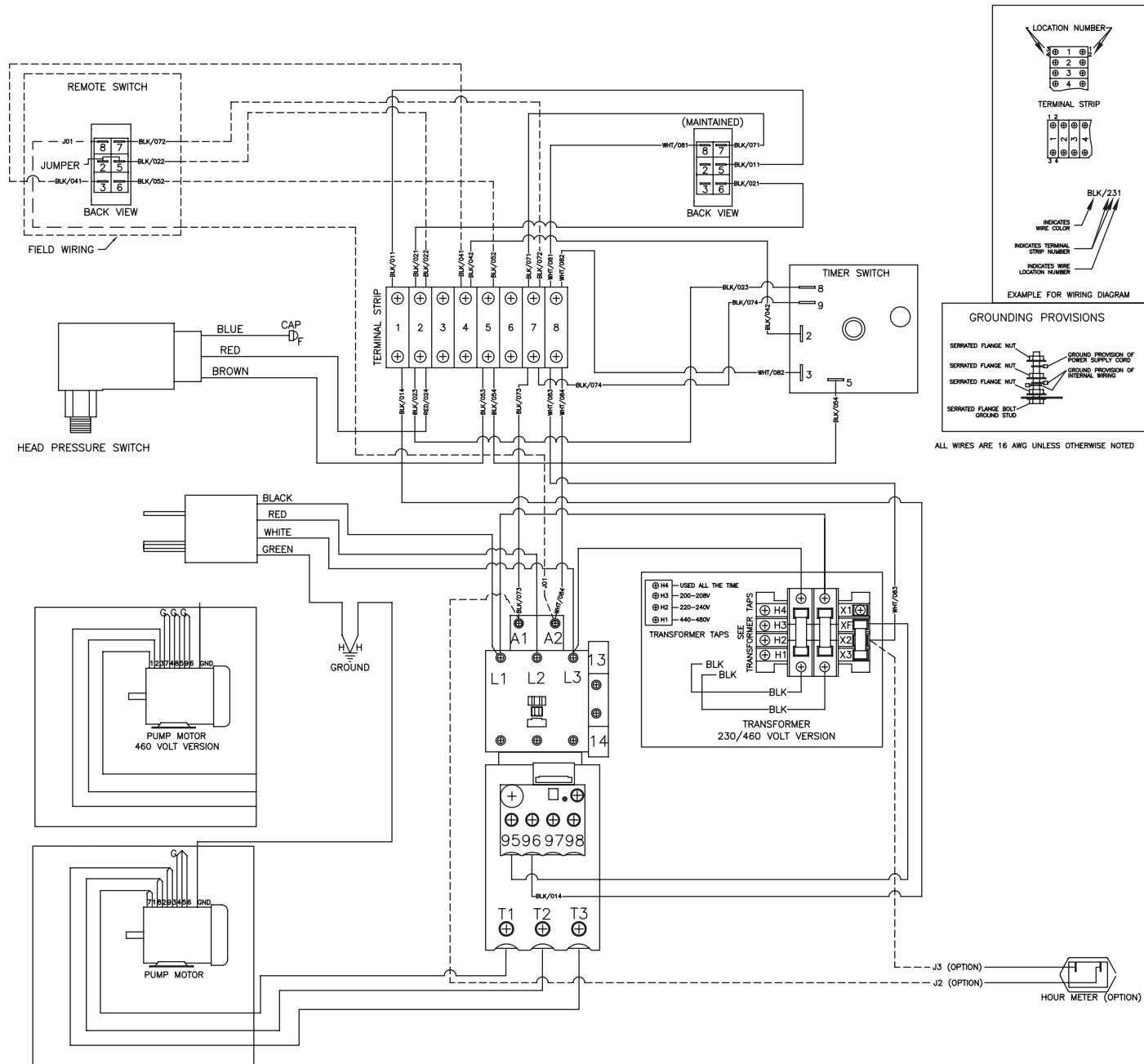
WIRE DIAGRAM - RB 1 PHASE (CX-0078)_091813

WIRE SCHEMATIC - REMOTE BOX 3 PHASE (CX-0078 AND CX-0076) (AFTER SERIAL #10495457)



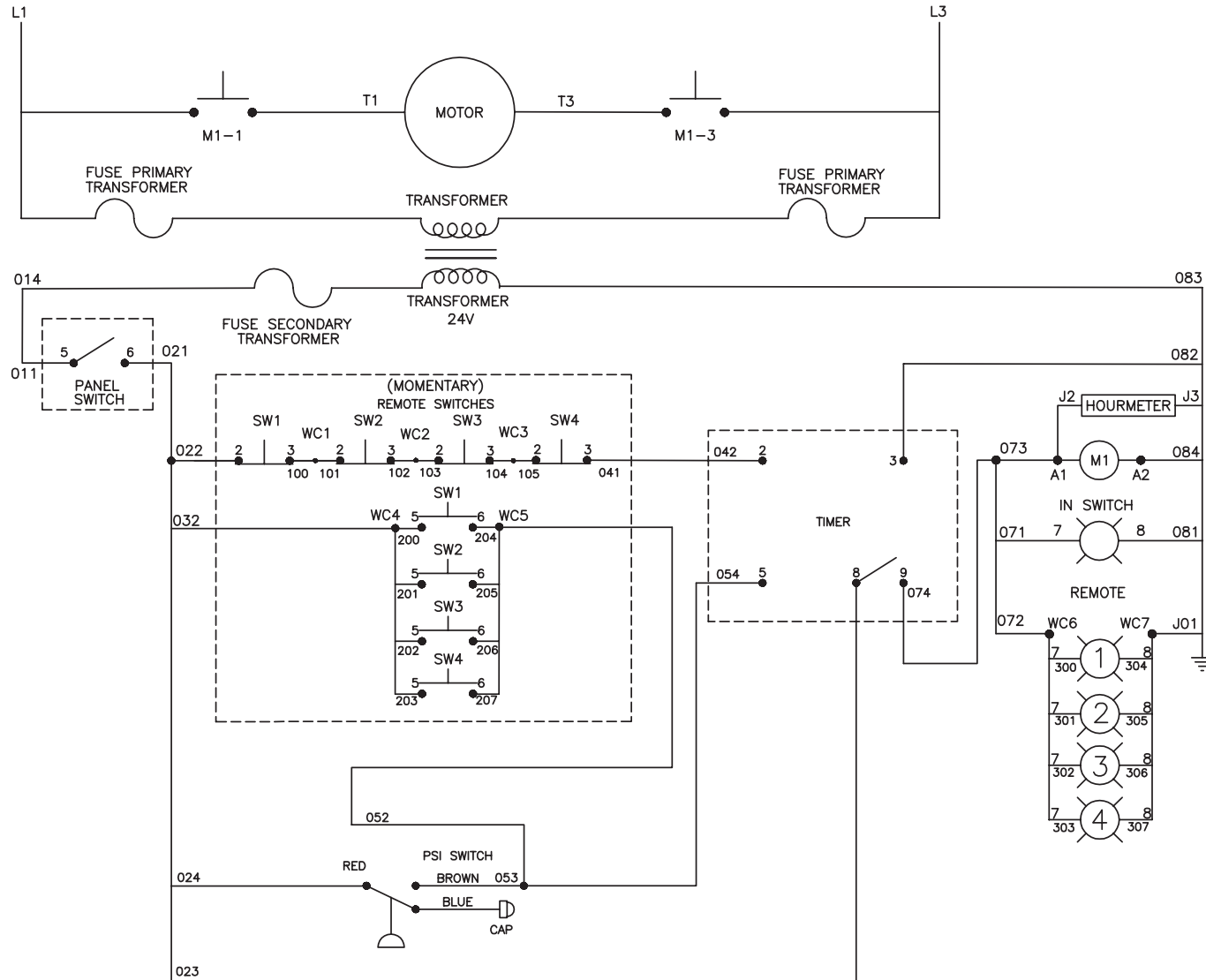
WIRE SCHEMATIC - RB 3 PHASE (CX-0078_CX-0076) 091813

WIRE DIAGRAM - REMOTE BOX 3 PHASE (CX-0078 AND CX-0076) (AFTER SERIAL #10495457)



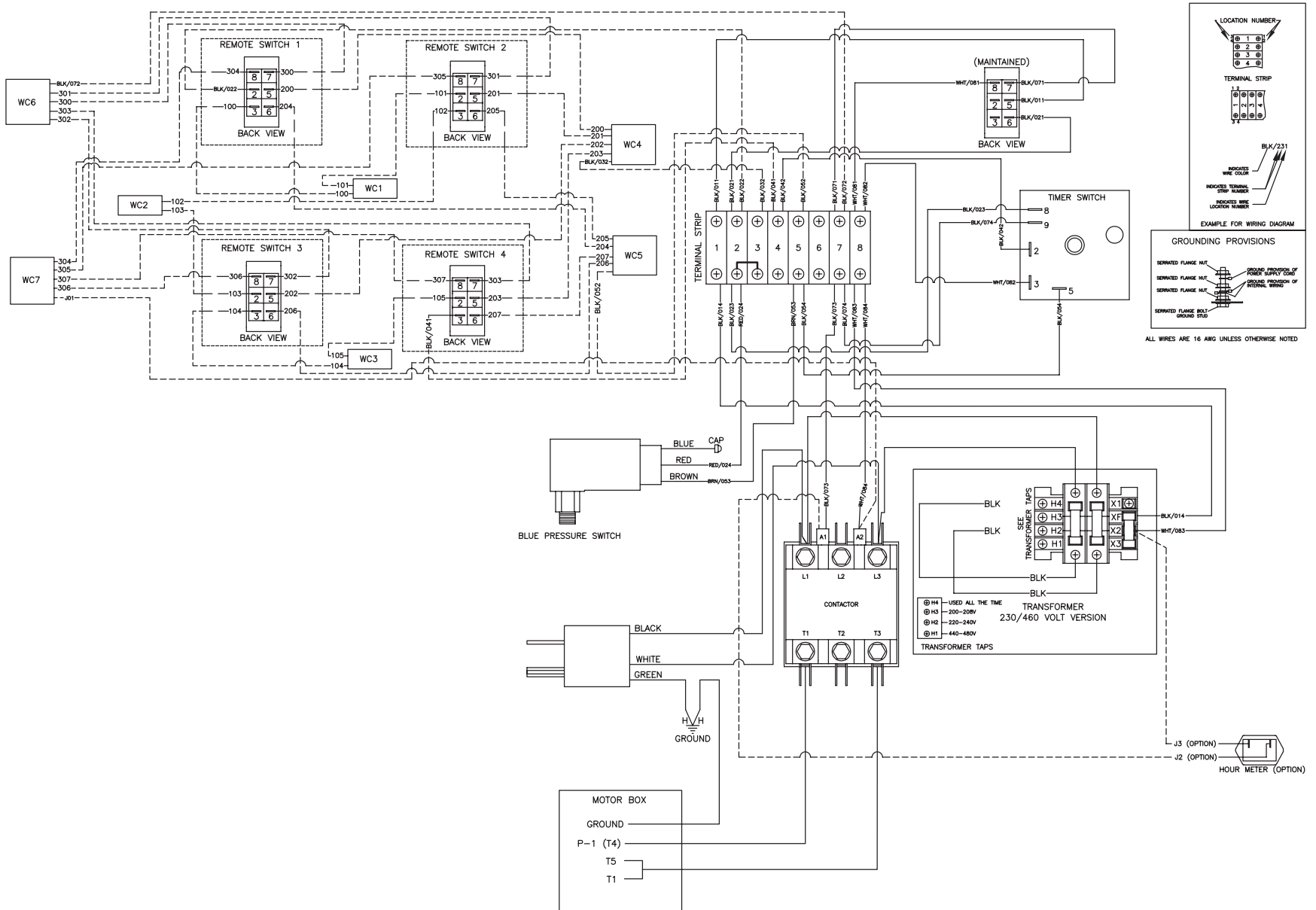
WIRE DIAGRAM - RB 3 PHASE (CX-0078_CX-0076) 091813

WIRING SCHEMATIC - MULTI REMOTE BOX - 1 PHASE (CX-0078) (AFTER SERIAL #10495457)



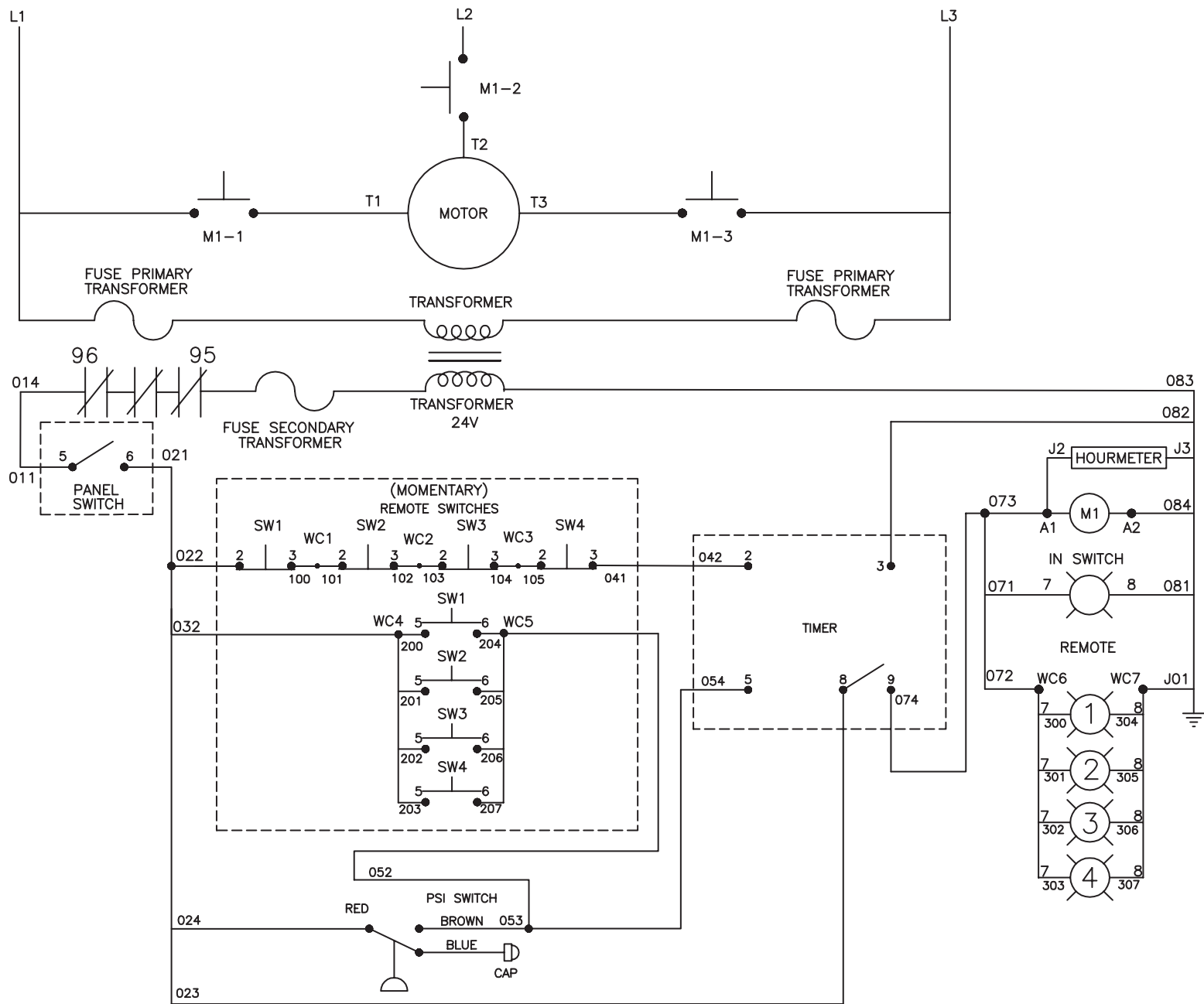
WIRE SCHEMATIC - RB MULTI 1 PHASE (CX-0078) 091813

WIRING DIAGRAM - MULTI BOX - 1 PHASE (CX-0078) (AFTER SERIAL #10495457)



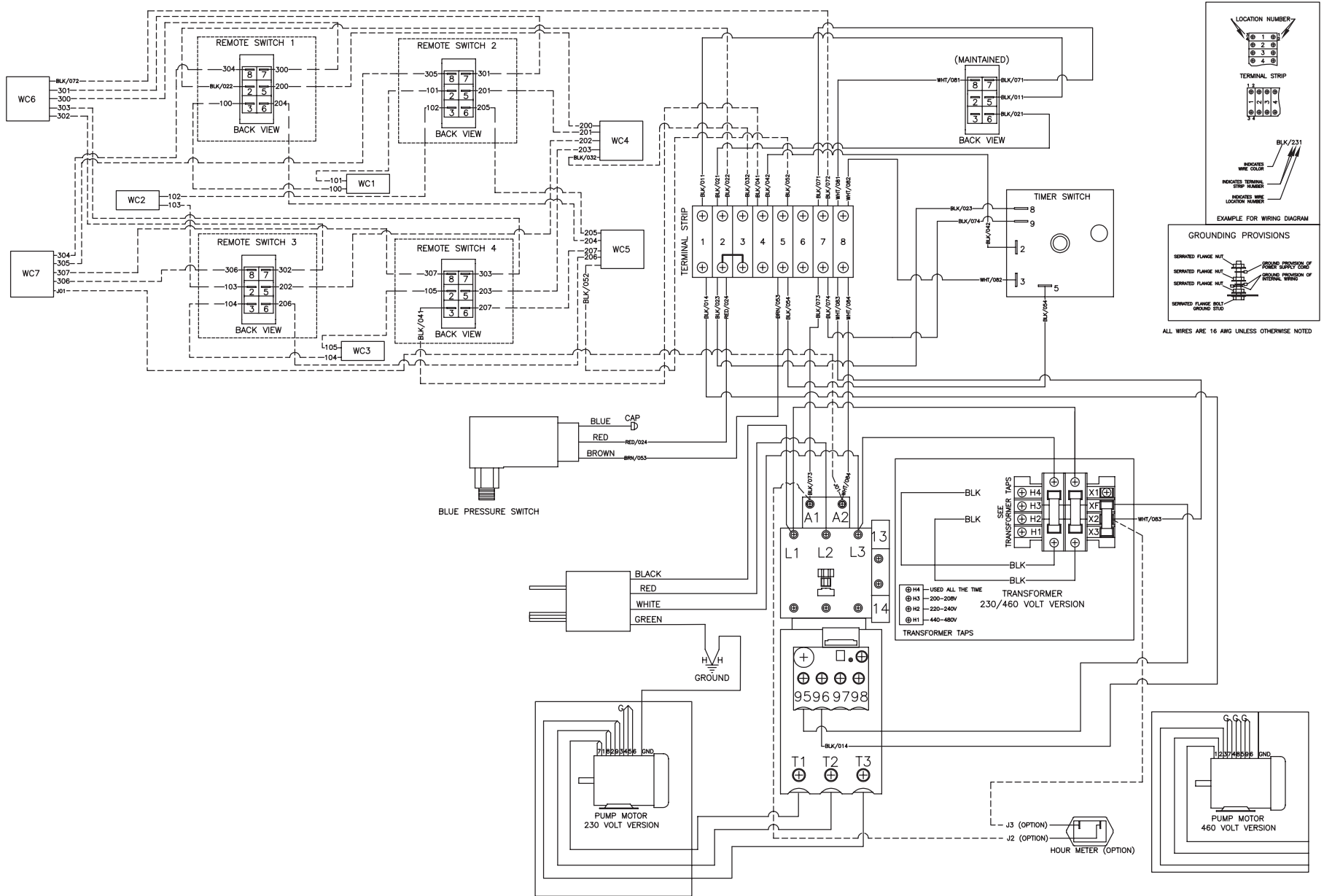
WIRE DIAGRAM - RB MULTI 1 PHASE (CX-0078) 091813

WIRING SCHEMATIC - MULTI REMOTE BOX, 3 PHASE (CX-0078 AND CX-0076) (AFTER SERIAL #10495457)



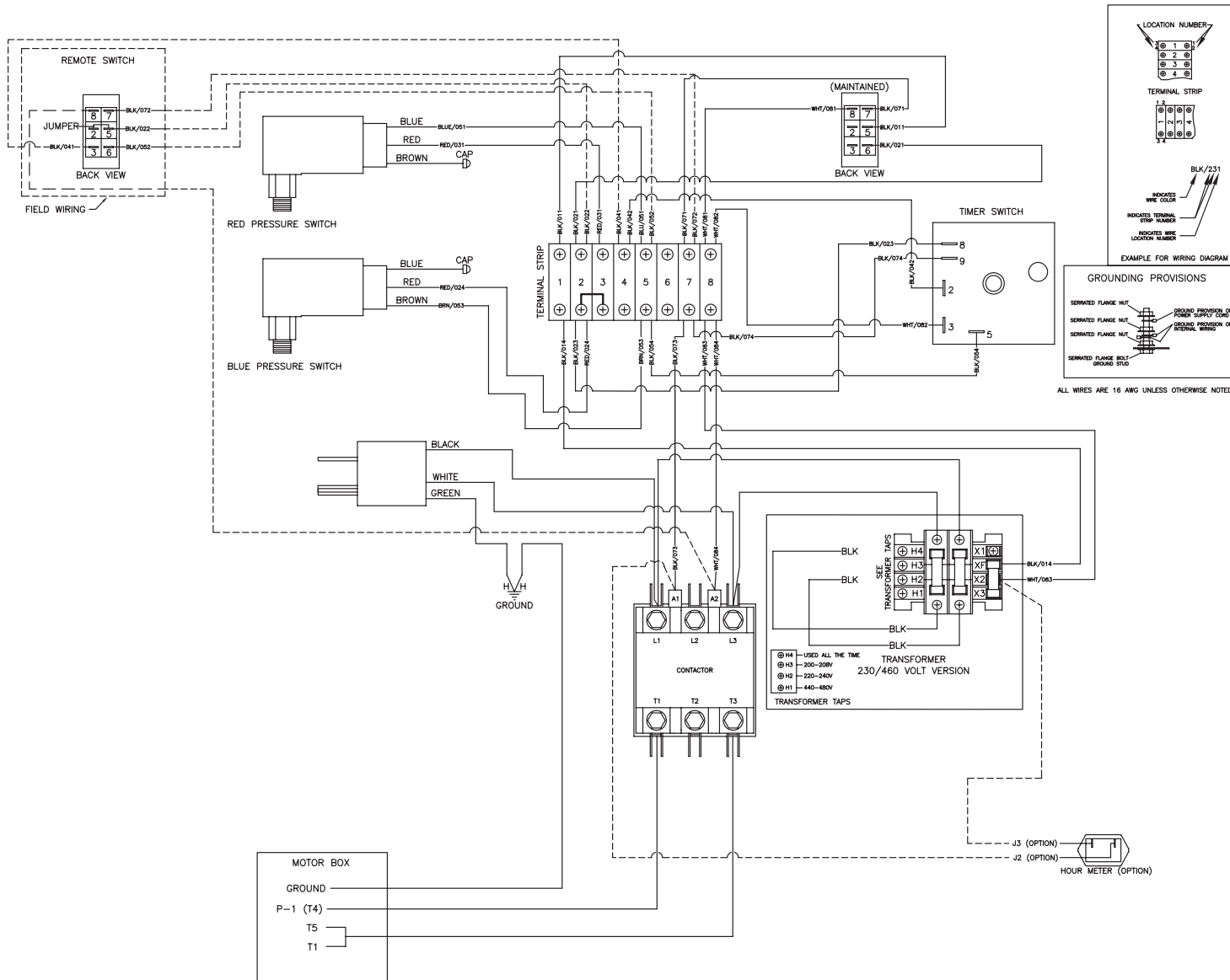
WIRE SCHEMATIC - RB MULTI 3 PHASE (CX-0078_CX-0076) 091813

WIRING DIAGRAM - MULTI REMOTE BOX, 3 PHASE (CX-0078 AND CX-0076) (AFTER SERIAL #10495457)



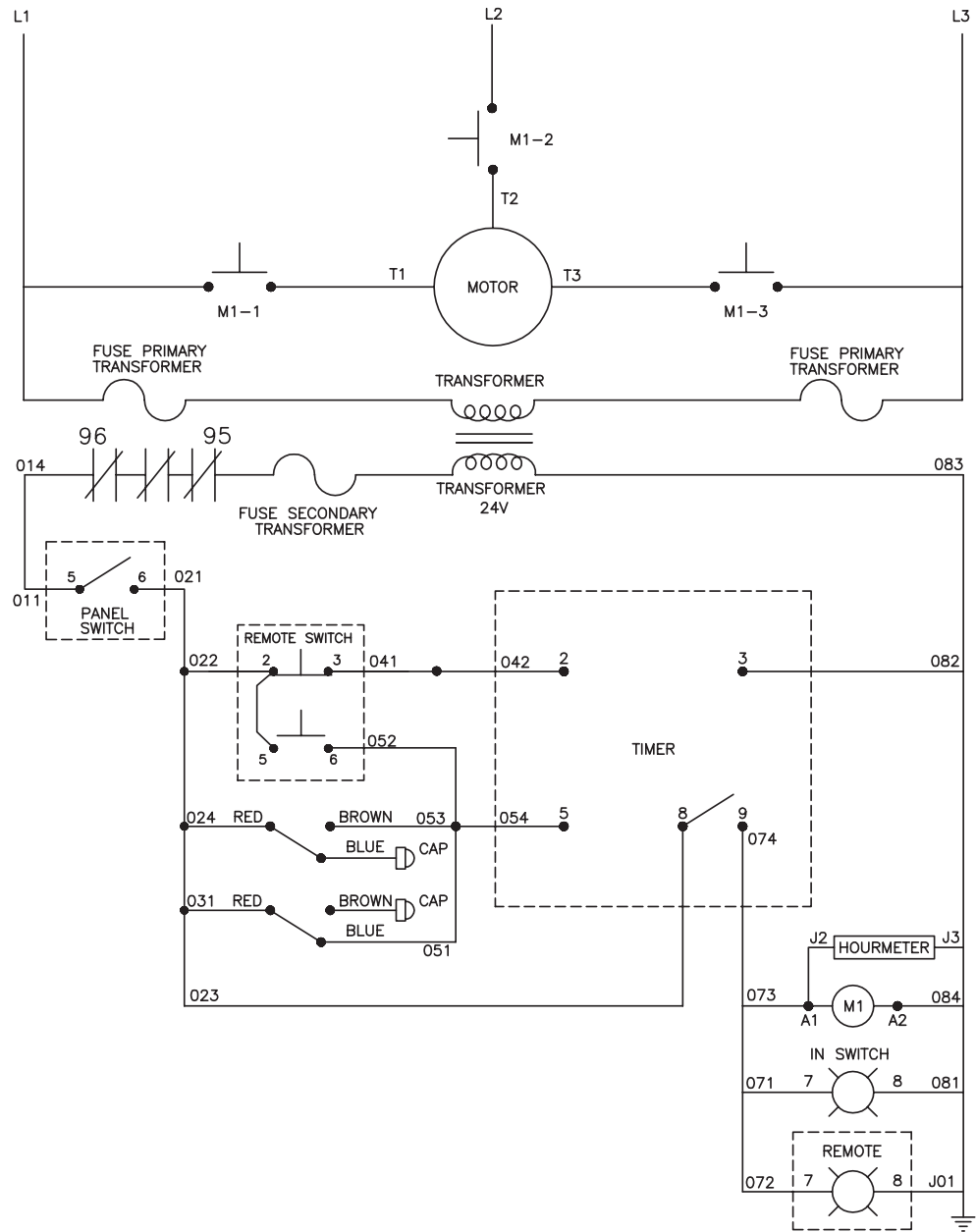
WIRE DIAGRAM - RB 3 PHASE (CX-0078_CX-0076) 091813

WIRING DIAGRAM - AUTO START/STOP AND REMOTE BOX, 1 PHASE (AFTER SERIAL #10495457)



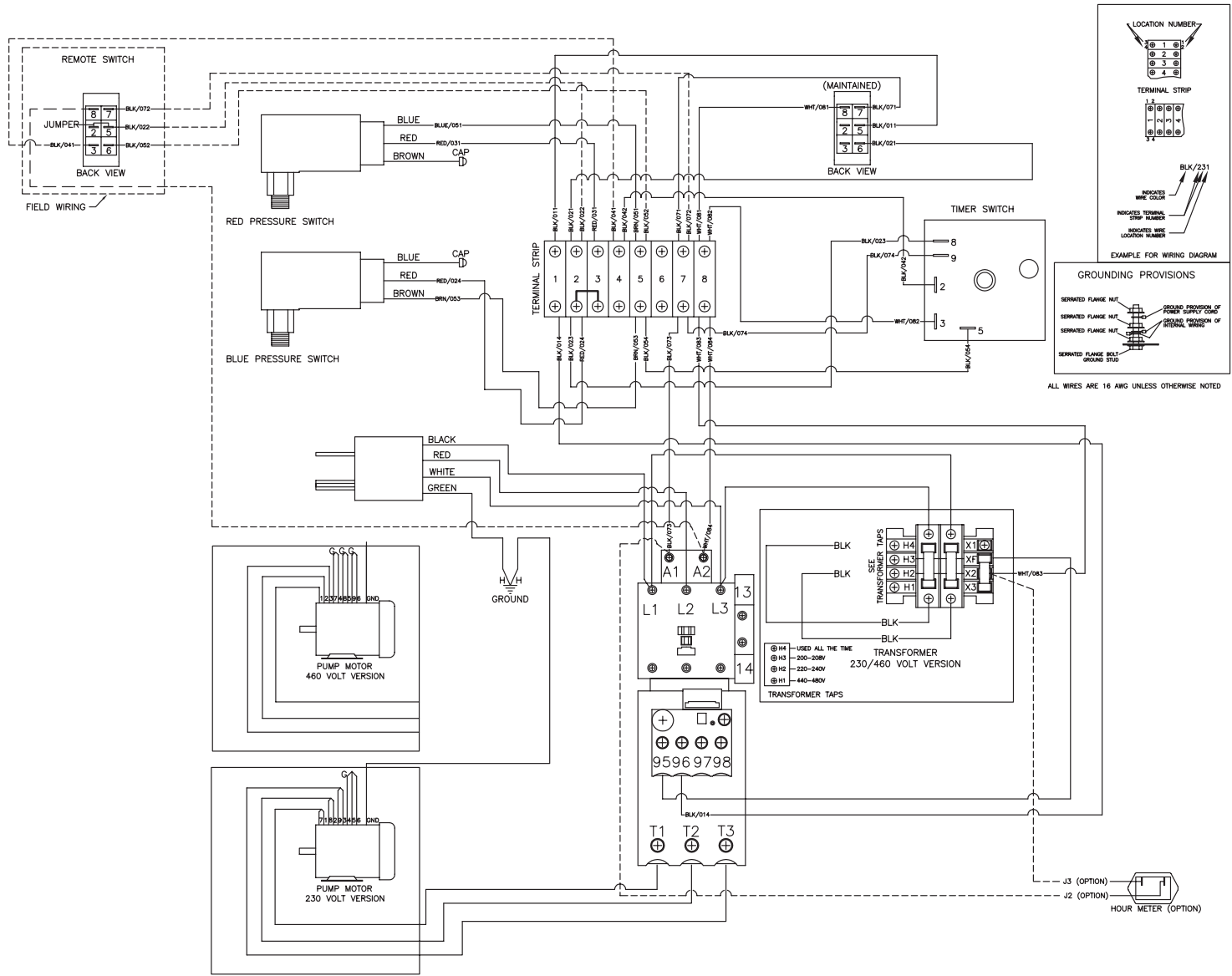
WIRE DIAGRAM - TD, AUTO SS, RB 1 PHASE 091813

WIRING SCHEMATIC - AUTO START/STOP AND REMOTE BOX 3 PHASE (CX-0076) (AFTER SERIAL #10495457)



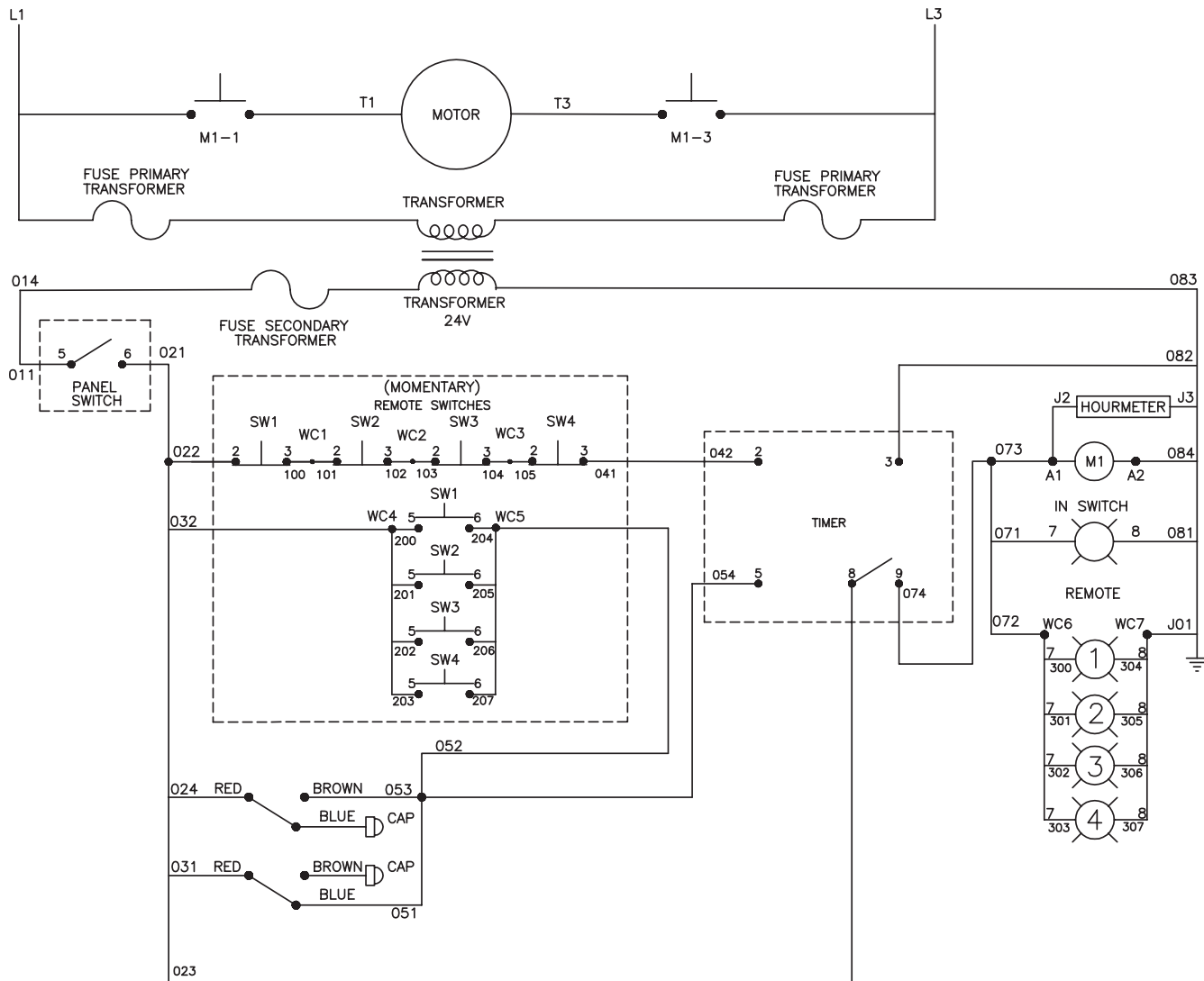
WIRE SCHEMATIC - TD, AUTO SS, RB 3 PHASE_CX-0076 091813

WIRING DIAGRAM - AUTO START/STOP AND REMOTE BOX 3 PHASE (CX-0076) (AFTER SERIAL #10495457)



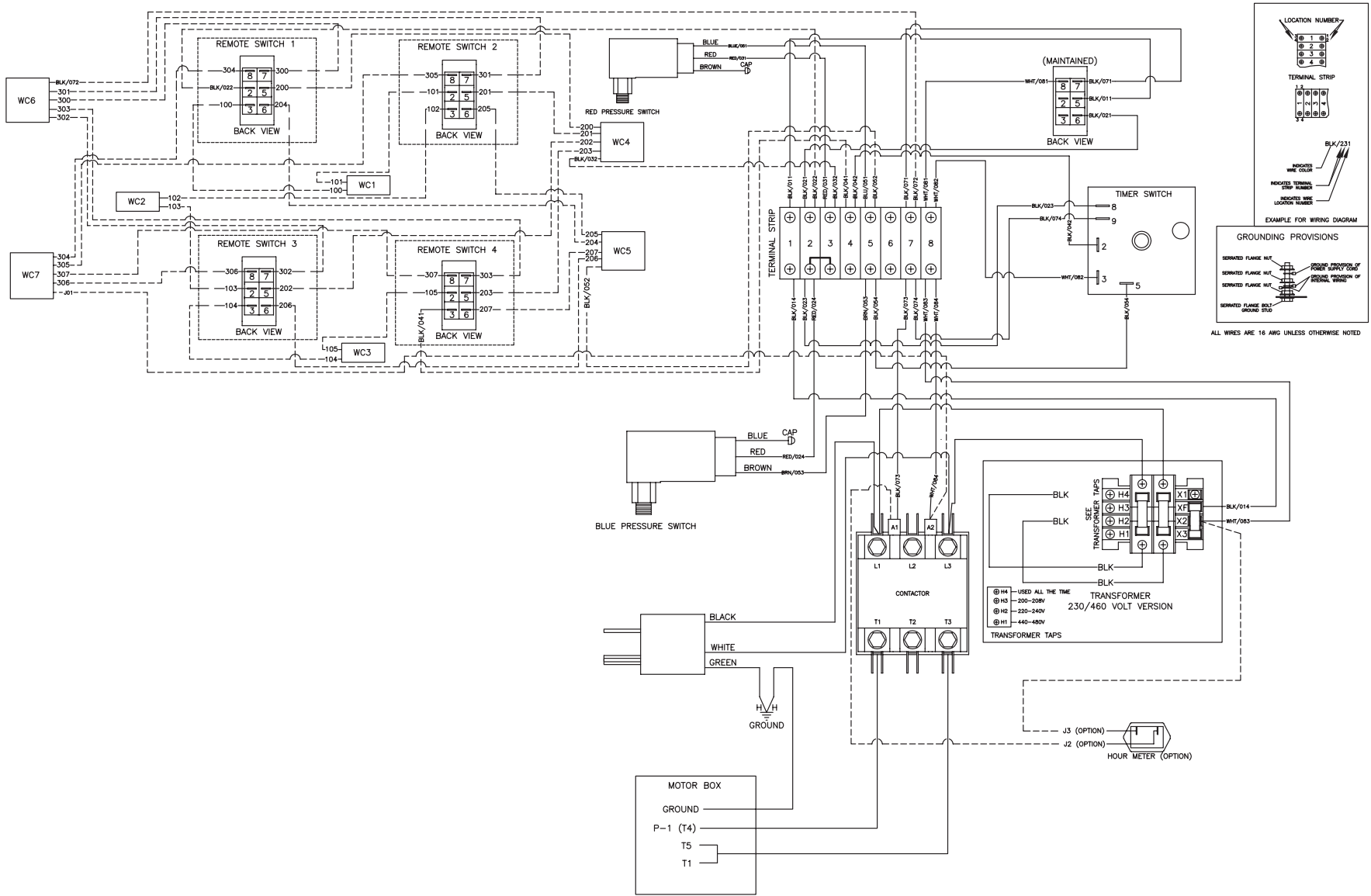
WIRE DIAGRAM - TD, AUTO SS, RB 3 PHASE_CX-0076 091813

WIRING SCHEMATIC - AUTO START/STOP AND MULTI REMOTE BOX, 1 PHASE (AFTER SERIAL #10495457)



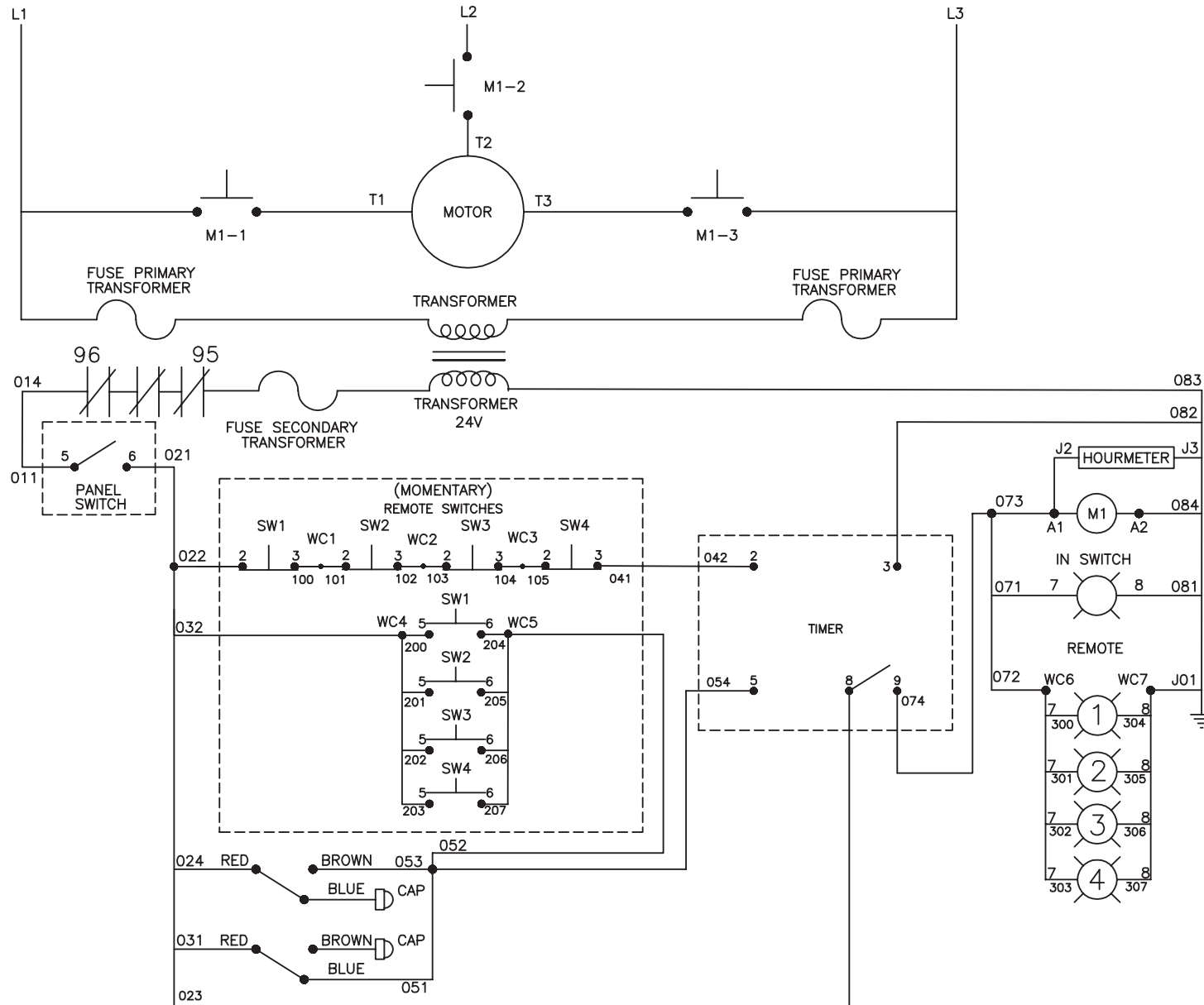
WIRE SCHEMATIC - RB MULTI, AUTO SS 1 PHASE (CX-0069_CX-0078) 091813

WIRING DIAGRAM - AUTO START/STOP AND MULTI REMOTE BOX, 1 PHASE (AFTER SERIAL #10495457)



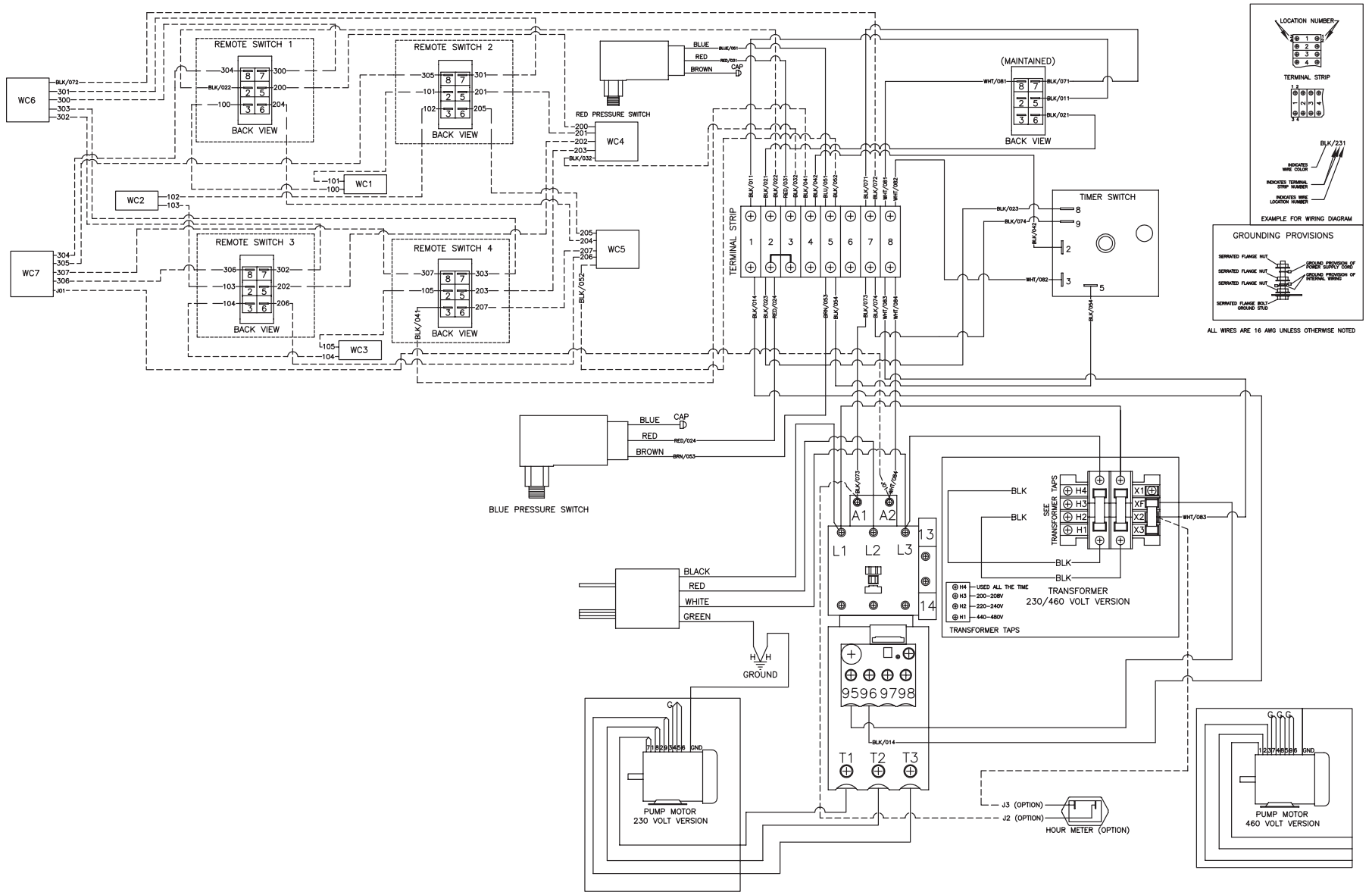
WIRE DIAGRAM - RB MULTI, AUTO SS 1 PHASE (CX-0069_CX-0078) 091813

WIRING SCHEMATIC - AUTO START/STOP AND MULTI REMOTE BOX, 3 PHASE (CX-0069 AND CX-0076) (AFTER SERIAL #10495457)



WIRE SCHEMATIC - RB MULTI, AUTO SS 3 PHASE (CX-0069, CX-0076) 091713

WIRING DIAGRAM - AUTO START/STOP AND MULTI REMOTE BOX, 3 PHASE (CX-0069 AND CX-0076) (AFTER SERIAL #10495457)



WIRE DIAGRAM - RB MULTI, AUTO SS 3 PHASE (CX-0069_CX-0076) 091713

