

PARTS LIST FOR
3003 SERIES
PORTABLE/ALUMINUM
GASOLINE DRIVEN/DIRECT DRIVE
COLD WATER PRESSURE WASHER

Engine Oil Grade:	SAE10W-30
Engine Oil Capacity:	37 oz.
Pump Oil Grade:	Pump Oil #AW-4085-0016
Pump Oil Capacity:	14 oz.
Nozzle Size:	3.5

This Parts Listing has been compiled for your benefit. You can be assured your new Cold Water Pressure Washer was constructed and designed with quality and performance in mind using over 25 years experience in the pressure washer business. Each component has been rigorously tested to insure the highest level of acceptance.

The contents of this Parts Listing are based on the latest product information available at the time of publication. The manufacturer reserves the right to make changes in price, color, materials, equipment, specifications or models at any time without notice.

WARNING

THIS IS A PROFESSIONAL HIGH PRESSURE, COLD WATER PRESSURE WASHER. CAUTION SHOULD BE OBSERVED WHEN USING OR REPAIRING THIS UNIT! READ AND FOLLOW THE SAFETY WARNINGS LISTED BELOW BEFORE ATTEMPTING ANY REPAIRS ON THIS PRESSURE WASHER!

SAFETY WARNINGS

1. NEVER alter or modify the equipment. Be sure any accessory items and system components being used will withstand the pressure developed. Use only genuine manufactured parts for repair of your pressure washer. Failure to do so can cause hazardous operating conditions and will VOID warranty.
2. NEVER make adjustments on machinery while the unit is connected to the engine without first removing the ignition cable from the spark plug. Turning over the machinery by hand during adjustment or cleaning might start the engine and machinery with it, causing serious injury to the operator.
3. Know how to stop and bleed pressures quickly. Be thoroughly familiar with controls.
4. Before servicing the unit, turn unit off, relieve the water pressure and allow the unit to cool down. Do not make repairs while the unit is running. Service in a clean, dry, flat area. Block the wheels to prevent the unit from moving. Be especially careful to properly dispose of any flammable materials.
5. After testing the machine, DO NOT leave the pressurized unit unattended. Shut off the unit and release trapped pressure before leaving.

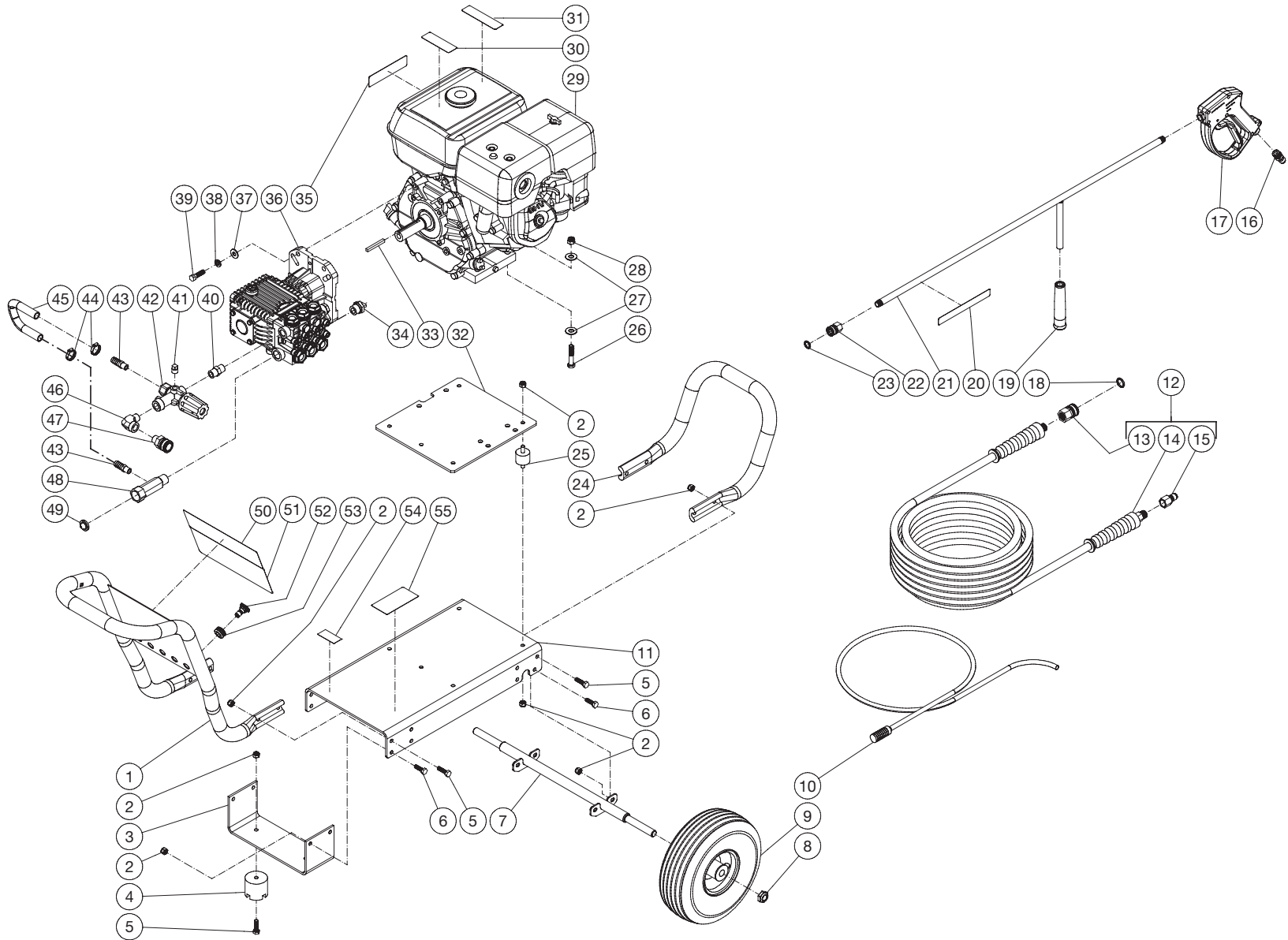
Table of Contents

SPECIFICATIONS	3
FRAME ASSEMBLY	4
PUMP ASSEMBLY (3-0389)	6
PUMP ASSEMBLY (3-0431)	8
UNLOADER ASSEMBLY (8-0361)	10

SPECIFICATIONS

Operating Pressure (PSI/Bar):	3000/206.8	
High Pressure Nozzle:	3.5	
Water Volume (GPM/lpm):	3.0/11	
Engine:	Honda	
Model	GX270	
Engine Type	4 Stroke, Overhead Valve, Single Cylinder	
Oil Type	SAE 10W-30	
Oil Capacity (oz./liters)	37/1.1	
Low Oil Protection	Oil Alert™	
Fuel Type	Unleaded Gasoline 86 Octane Minimum	
Fuel Capacity (gallon/ liters)	1.6/6.0	
Starting	Recoil	
Maximum No Load RPM	3600 (+/- 100) RPM	
Pump:	Direct Driven, Oil Bath, Triplex Piston	
Model	General	A/R
Oil Type	Pump Oil #AW-4085-0016	
Oil Capacity (oz./liters)	14/4	
Plungers	Ceramic	
Manifold	Forged Brass	
Valves	Stainless Steel	
Unloader	Adjustable	
Thermal Relief Valve	Relieves heated water during unloader bypass stage	
Unit Net Weight (lbs/Kg)	111 / 50.35	99 / 44.91
Unit Shipping Weight (lbs/Kg)	160.28 / 72.70	148.28 / 67.26
Unit Net Dimension (in/cm)	42.5Lx23.5Wx25H/108Lx60Wx63.5H	
Unit Shipping Dimension (in/cm)	39.5Hx25Wx31.5H/100.5Lx63.5Wx80H	

FRAME ASSEMBLY



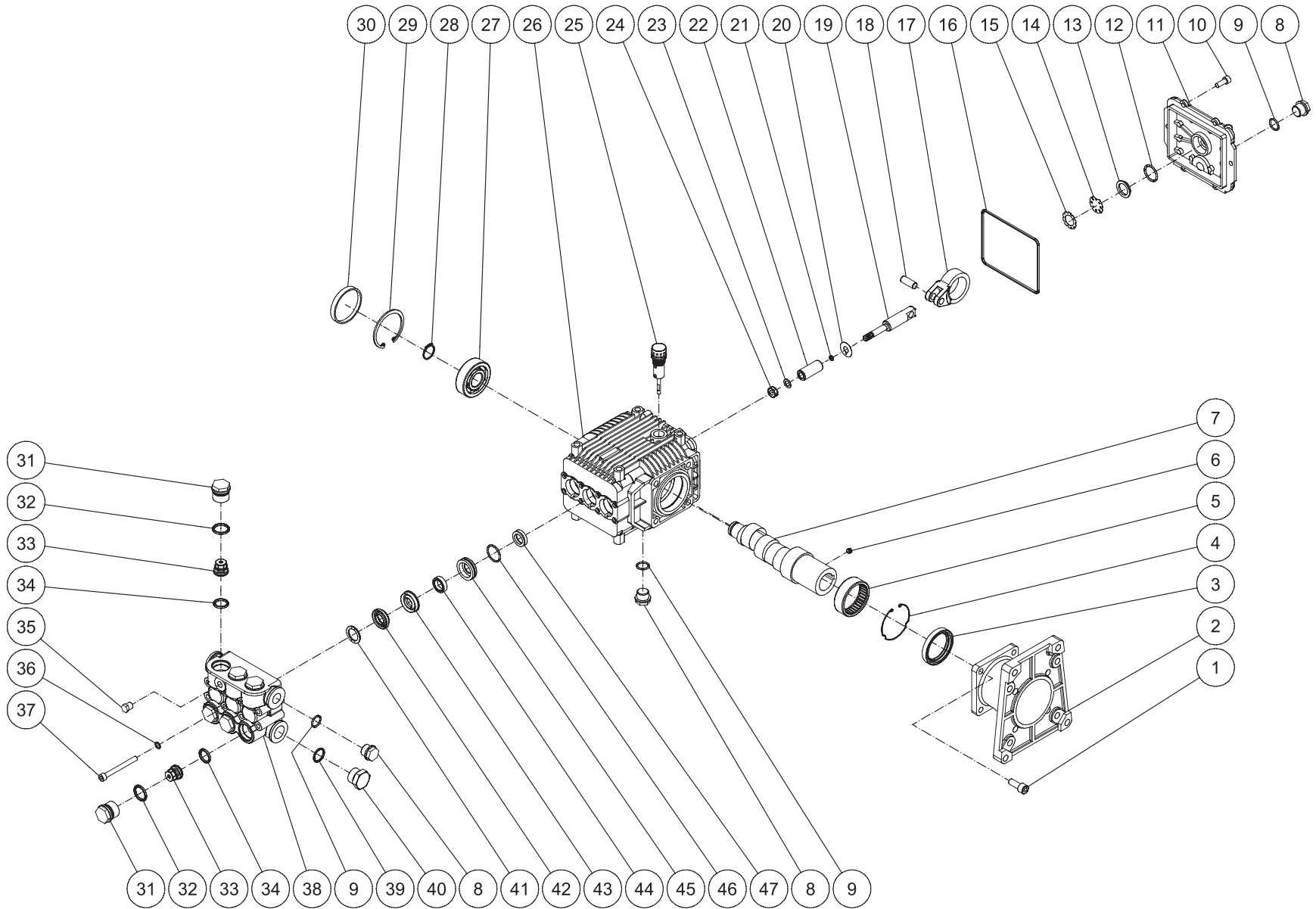
DC-3003-A0H6G_A 061217 JJR

FRAME ASSEMBLY

ITEM	TITLE	PART #	QTY	ITEM	TITLE	PART #	QTY
1	HANDLE	7-0182	1	31	DECAL - RISK OF BURNS (SEE 71-0065)	N/A	1
2	LOCKNUT	30-0157	26	32	ISOLATION PLATE	56-0053	1
3	BRACKET	56-0054	1	33	KEY	43-0078	1
4	ISOLATOR	14-0008	2	34	RELIEF VALVE	22-0005	1
5	BOLT	27-0068	10	35	DECAL-3000 PSI (SEE 71-0065)	34-2899	1
6	BOLT	27-0067	8	36	PUMP (GENERAL)	3-0431	1
7	AXLE	13-0230A53	1	-	PUMP (A/R)	3-0389	1
8	LOCKNUT	30-0117	2	37	WASHER	28-0022	4
9	WHEEL	14-0130	2	38	LOCKWASHER	29-0008	4
10	DETERGENT HOSE	19-0233	1	39	BOLT	27-0118	4
11	BASEPLATE	5-0207	1	40	NIPPLE	24-0010	1
12	PRESSURE HOSE ASSEMBLY	851-0338	1	41	PLUG	23-0238	1
13	QC SOCKET	17-0004	1	42	UNLOADER	8-0361	1
14	HOSE	15-0209	1	43	HOSE BARB	23-0120	2
15	QUICK CONNECT	17-0006	1	44	HOSE CLAMP	42-0011	2
16	QUICK CONNECT	17-0005	1	45	HOSE *(TWO FEET REQUIRED)	15-0007	1
17	GUN	16-0483	1	46	ELBOW	24-0105	1
18	O-RING	25-0123	1	47	QUICK CONNECT SOCKET	17-0007	1
19	GRIP	7-0002	1	48	INLET FITTING	23-0516	1
20	DECAL - RISK OF INJECTION (SEE 71-0065)	N/A	1	49	FILTER	19-0001	1
21	WAND (INCLUDES GRIP & QUICK CONNECT)	16-0418	1	50	DECAL	N/A	1
22	QUICK CONNECT	17-0001	1	51	DECAL - WARNING/CAUTION/OPERATION (SEE 71-0065)	N/A	1
23	O-RING	25-0122	1	52	NOZZLE	18-0392	1
24	HANDLE	7-0183	1	-	NOZZLE	18-0393	1
25	ISOLATOR	14-0097	4	-	NOZZLE	18-0395	1
26	BOLT	27-0121	4	-	NOZZLE	18-0396	1
27	WASHER	28-0023	8	53	GROMMET	33-0001	5
28	LOCKNUT	30-0159	4	54	DECAL - MADE IN USA	34-3553	1
29	ENGINE - HONDA	1-0162	1	55	DECAL- SILVER STICKER	N/A	1
30	DECAL - RISK OF FIRE (SEE 71-0065)	N/A	1	-	DECAL SET	71-0065	1

*MUST ORDER IN ONE FOOT LENGTHS

PUMP ASSEMBLY (3-0389)



3-0389 030713 JDK

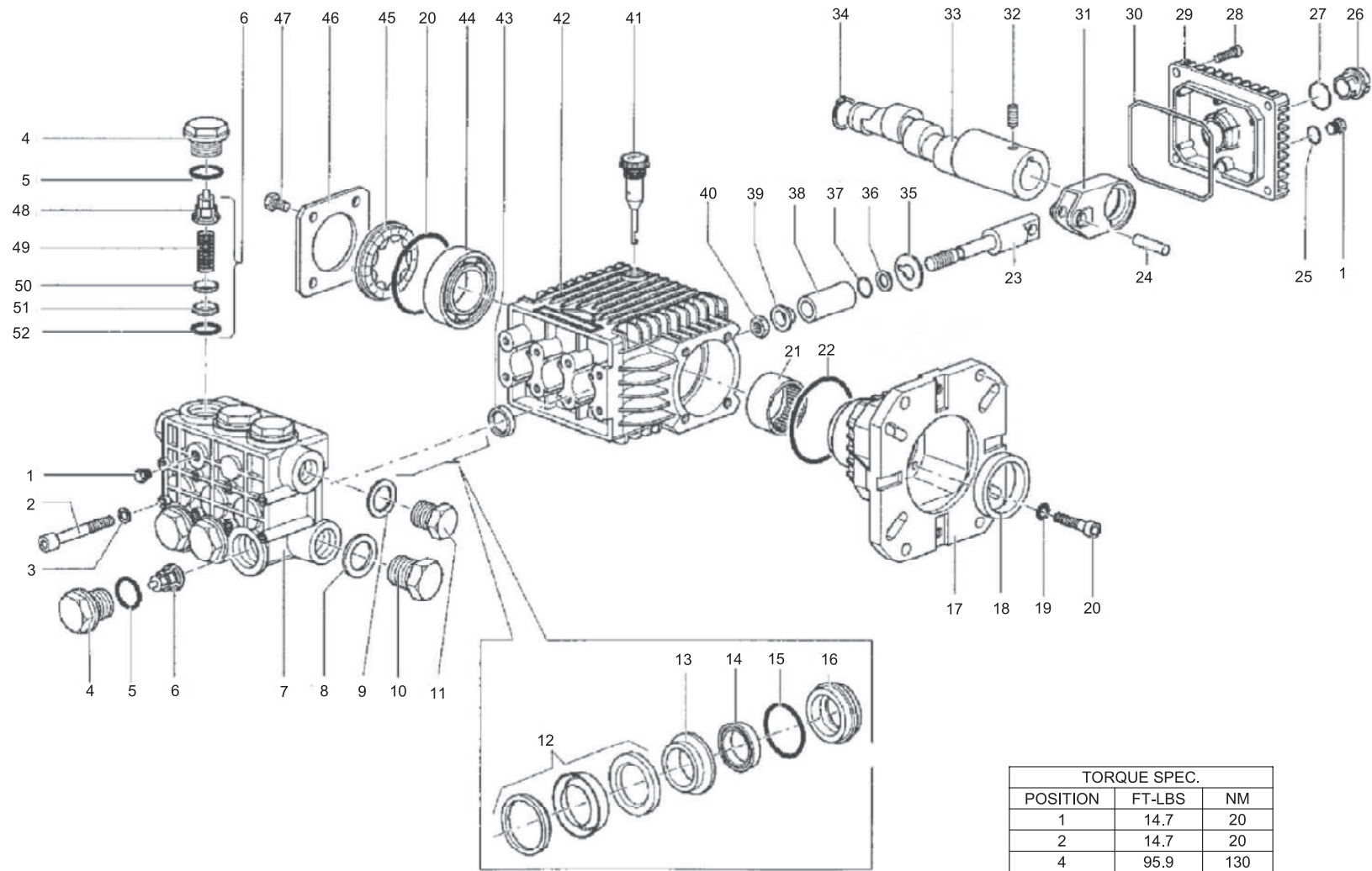
PUMP ASSEMBLY

ITEM	DESCRIPTION	PART #	QTY	ITEM	DESCRIPTION	PART #	QTY
1	SCREW	27-8432	4	25	OIL DIPSTICK	39-0090	1
2	PUMP FLANGE	46-0714	1	26	CRANKCASE	46-0724	1
3	OIL SEAL	26-0192	1	27	BALL BEARING	48-0063	1
4	RETAINING RING	46-0667	1	28	SNAP RING	46-0732	1
5	NEEDLE BEARING	48-0059	1	29	SNAP RING	46-0676	1
6	SET SCREW	27-8886	1	30	BEARING CAP	46-0725	1
7	CRANKSHAFT	46-0717	1	31	VALVE CAP	39-0087	6
8	PLUG	39-0086	3	32	O-RING	25-0160	6
9	O-RING	25-0325	3	33	SINGLE VALVE ASSEMBLY - BLACK (SEE KIT 70-0161)	70-0161	6
10	BOLT	27-8888	6	34	O-RING (SEE KIT 70-0161)	25-0386	6
11	CRANKCASE COVER	46-0719	1	35	PLUG	39-0097	1
12	O-RING	25-0370	1	36	LOCKWASHER	29-0153	8
13	OIL SIGHT GLASS	46-0670	1	37	BOLT	27-8875	8
14	OIL REFLECTOR	46-0824	1	38	MANIFOLD	46-0730	1
15	SPRING RETAINER	46-0671	1	39	O-RING	25-0372	1
16	O-RING	25-0398	1	40	PLUG	39-0088	1
17	CONNECTING ROD	46-0720	3	41	SUPPORT RING - 15mm (SEE KIT 70-0182)	70-0182	3
18	PISTON PIN	46-0721	3	42	V PACKING (SEE KIT 70-0181)	46-0729	3
19	PLUNGER ROD	46-0722	3	43	PACKING RETAINER	46-0728	3
20	SLINGER WASHER	28-1027	3	44	LP SEAL (SEE KIT 70-0181)	46-0727	3
21	O-RING	25-0371	3	45	LP RETAINER	46-0726	3
22	CERAMIC PISTON	46-0723	3	46	O-RING (SEE KIT 70-0181)	25-0149	3
23	WASHER	26-0187	3	47	OIL SEAL	26-0193	3
24	NUT	30-6016	3				

REPLACEMENT KITS

KIT #	DESCRIPTION	ITEMS	# OF ASSEMBLIES	# OF CYLINDERS
-	KIT - OIL SEALS	3, 16, 30, 47	1, 1, 1, 3	3
-	KIT - PISTONS	20-24	3	3
70-0181	KIT - HIGH PRESSURE SEALS	42, 44, 46	3	3
70-0182	KIT - SUPPORT RINGS	41	3	3
70-0161	KIT - VALVES	33, 34	6	3

PUMP ASSEMBLY (3-0431)



TORQUE SPEC.		
POSITION	FT-LBS	NM
1	14.7	20
2	14.7	20
4	95.9	130
10	29.4	40
11	29.4	40
20	7.3	10
30	7.3	10
42	11.0	15
49	7.3	10

3-0431 012516

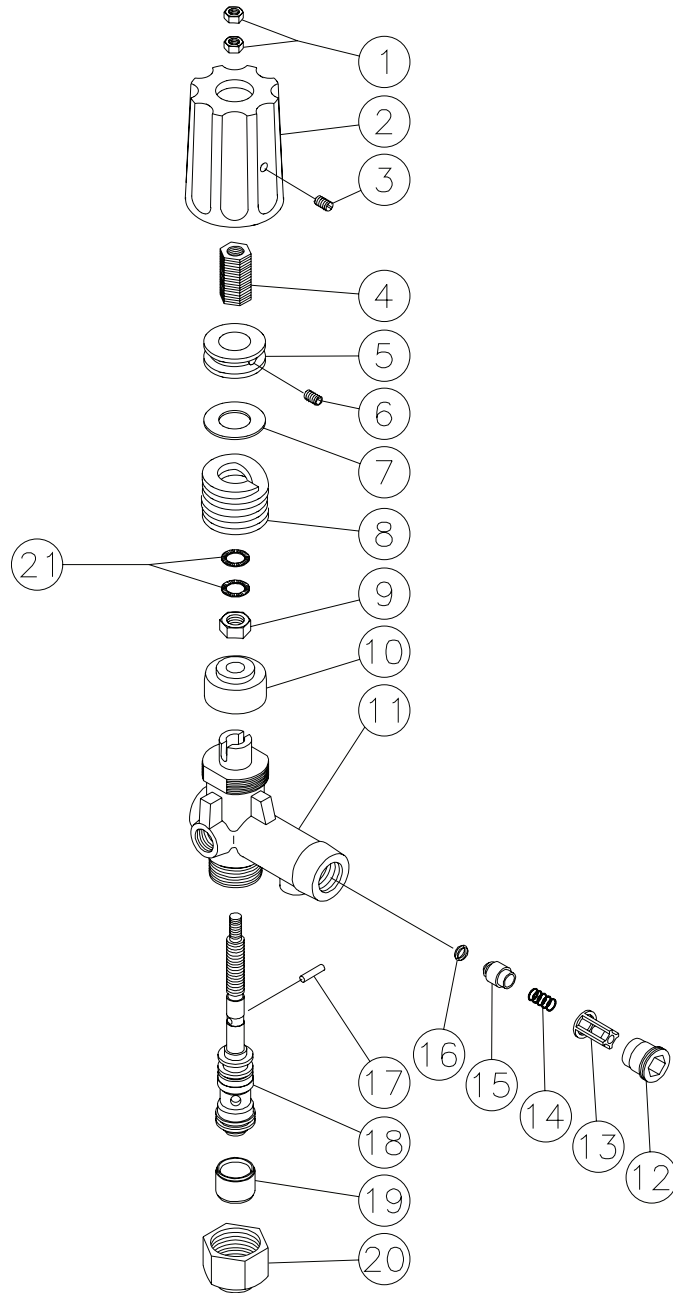
PUMP ASSEMBLY

ITEM	DESCRIPTION	PART #	QTY	ITEM	DESCRIPTION	PART #	QTY
1	PLUG/HEX	39-0017	2	27	O-RING	25-0059	1
2	BOLT	27-9576	8	28	BOLT	27-8401	4
3	LOCKWASHER	29-1014	8	29	CRANKCASE COVER	46-1164	1
4	VALVE PLUG (SEE KIT 70-0668)	39-0071	6	30	O-RING	25-0317	1
5	O-RING (SEE KIT 70-0668)	25-0012	6	31	CONNECTING ROD	46-1160	3
6	VALVE ASSEMBLY (SEE KIT 70-0028)	SEE KIT	6	32	SCREW	27-8886	1
7	MANIFOLD	N/A	1	33	CRANKSHAFT	46-1161	1
8	WASHER	28-1038	1	34	SNAP RING	46-0104	1
9	WASHER	28-1002	1	35	SLINGER WASHER	28-1049	3
10	PLUG	39-0019	1	36	ANTI-EXTRUSION RING	25-0143	3
11	PLUG	39-0018	1	37	O-RING	N/A	3
12	PACKING ASSY (SEE KIT 70-0669 OR 70-0415)	SEE KIT	3	38	PISTON	46-0228	3
13	INTERNAL RING (SEE KIT 70-0415)	SEE KIT	3	39	WASHER GASKET	46-1231	3
14	LOW PRESSURE SEAL (SEE KIT 70-0669 OR 70-0415)	SEE KIT	3	40	NUT	46-0168	3
15	O-RING (SEE KIT 70-0415)	SEE KIT	3	41	DIPSTICK	46-0143	1
16	SEAL RETAINER (SEE KIT 70-0415)	SEE KIT	3	42	CRANKCASE	46-1166	1
17	FLANGE	38-0038	1	43	OIL SEAL (SEE KIT 70-0414)	SEE KIT	3
18	OIL SEAL	26-0181	1	44	BEARING BALL	48-0011	1
19	WASHER	28-0200	4	45	OIL LEVEL INDICATOR SPACER	46-0574	1
20	BOLT	27-8404	2	46	RETAINER OIL LEVEL SPACER	46-0084	2
21	NEEDLE BEARING	48-0040	1	47	BOLT	27-8000	8
22	O-RING	25-0060	1	48	VALVE CAGE	N/A	6
23	PLUNGER GUIDE	46-1165	3	49	SPRING	N/A	6
24	PIN	46-1162	3	50	VALVE PLATE	N/A	6
25	O-RING	25-0210	1	51	VALVE SEAT	N/A	6
26	SIGHT GLASS	46-1163	1	52	O-RING	25-0053	6

REPLACEMENT KITS

KIT #	DESCRIPTION	ITEMS	# OF ASSEMBLIES	# OF CYLINDERS
70-0028	KIT - VALVE	6	6	3
70-0668	KIT- VALVE PLUG	4,5	6	3
70-0414	KIT - OIL SEAL	43	3	3
70-0669	KIT - PACKING SEALS	12,14	3	3
70-0415	KIT - PACKING W/BRASS	12,13,14,15,16	1	1

UNLOADER ASSEMBLY (8-0361)



UNLOADER (850-0252)			
REF. #	DESCRIPTION	PART #	QTY.
1	Hex Nut	8-0362	2
2	Cover	7-0098	1
3	Set Screw	27-4280	1
4	Adjusting Insert- Brass	8-0363	1
5	Adjustment Nut	8-0364	1
6	Set Screw	8-0365	1
7	Glide Ring	8-0366	1
8	Spring	49-0104	1
9	Hex Nut	8-0367	1
10	Bushing	8-0368	1
11	Unloader Body	8-0369	1
12	Retainer	8-0269	1
13	Valve Housing	8-0104	1
14	Spring	49-0023	1
15	Valve	8-0105	1
16	O-ring	25-0036	1
17	Cylinder Pin	8-0372	1
18	Piston Repair Kit	70-0243	1
19	Spacer	8-0371	1
20	Stop Nut	8-0157	1
21	Washer	29-0154	2
	Check Valve Repair Kit (Includes 13-16)	70-0244	
	Unloader Complete	850-0252	

