



WATER TRAILER
MWT-0510-2MHD
OPERATOR'S MANUAL



CAUTION

**RISK OF INJURY! READ ENTIRE MANUAL BEFORE OPERATING!
THIS MANUAL IS AN IMPORTANT PART OF THE WATER TRAILER
AND MUST REMAIN WITH THIS UNIT!**

Table of Contents

INTRODUCTION	3
WARNING	4
PREPARATION	5
BEFORE TOWING WATER TRAILER	5
SAFETY PRECAUTIONS DURING USE.....	5
OPERATING INSTRUCTIONS	6
WATER FLOW	6
FILLING THE TANK	7
AFTER USE	7
OPERATING INSTRUCTIONS FOR THE HARD SUCTION OPTION	8
OPTION - HARD SUCTION.....	8
WATER FLOW:	8
FILLING THE TANK:.....	10
AFTER USE:.....	10

⚠ WARNING

Warning: This product contains lead, a chemical known to the State of California to cause birth defects or other reproductive harm.

Wash your hands after handling this product.

⚠ WARNING

This product contains one or more chemicals known to the State of California to cause cancer and birth defects or other reproductive harm.

⚠ WARNING

The engine exhaust from this product contains chemicals known to the State of California to cause cancer, birth defects or other reproductive harm.

INTRODUCTION

Congratulations on the purchase of your new Mi-T-M® Water Trailer! You can be assured your Mi-T-M® Water Trailer was constructed with the highest level of precision and accuracy. Each component has been rigorously tested by technicians to ensure the quality, endurance and performance of this Water Trailer.

The contents of this manual are based on the latest product information available at the time of publication. The Manufacturer reserves the right to make changes in price, color, materials equipment, specifications or models at any time without notice.



IMPORTANT!

A "DANGER, WARNING or CAUTION" safety warning will be used to designate and emphasize Safety Warnings that must be followed when operating this Water Trailer. Accompanying the safety warnings are "Signal Words" which designate the degree or level of hazard seriousness. The "Signal Words" used in this manual are as follows:

DANGER: INDICATES AN IMMINENTLY HAZARDOUS SITUATION WHICH, IF NOT AVOIDED, WILL RESULT IN DEATH OR SERIOUS INJURY.

WARNING: INDICATES A POTENTIALLY HAZARDOUS SITUATION WHICH, IF NOT AVOIDED, COULD RESULT IN DEATH OR SERIOUS INJURY.

CAUTION: INDICATES A POTENTIALLY HAZARDOUS SITUATION WHICH, IF NOT AVOIDED MAY RESULT IN MINOR OR MODERATE INJURY OR DAMAGE TO THE WATER TRAILER.

The symbols set below are "Safety Alert Symbols". These symbols are used to call attention to items or procedures that could be dangerous to you or other persons using this equipment.



ALWAYS PROVIDE A COPY OF THIS MANUAL TO ANYONE USING THIS EQUIPMENT. READ ALL INSTRUCTIONS IN THIS MANUAL AND ANY INSTRUCTIONS SUPPLIED BY MANUFACTURERS OF SUPPORTING EQUIPMENT BEFORE OPERATING THIS WATER TRAILER AND ESPECIALLY POINT OUT THE "SAFETY WARNINGS" TO PREVENT THE POSSIBILITY OF PERSONAL INJURY TO THE OPERATOR.

Once the unit has been delivered, immediately write in the serial number of your unit in the space provided below.

SERIAL NUMBER _____

Inspect for signs of obvious or concealed freight damage. If damage does exist, file a claim with the transportation company immediately. Be sure that all damaged parts are replaced and that the mechanical and electrical problems are corrected prior to operation of the unit. If you require service, contact Mi-T-M® Customer Service.

Mi-T-M® Corporation, 8650 Enterprise Drive, Peosta, IA 52068
563-556-7484 / 800-553-9053 / Fax 563-556-1235
Monday - Friday 8:00 a.m. - 5:00 p.m. CST

Please have the following information available for all service calls:

1. Model Number
2. Serial Number
3. Date and Place of Purchase



**THE FOLLOWING PAGES CONTAIN OPERATING
INSTRUCTIONS.**

**DO NOT ATTEMPT TO TOW YOUR WATER TRAILER
UNTIL YOU HAVE READ AND UNDERSTOOD ALL SAFETY
PRECAUTIONS AND INSTRUCTIONS LISTED IN THIS MANUAL.**

INCORRECT OPERATION CAN CAUSE SERIOUS INJURY!!

**DO NOT ALTER OR MODIFY THIS EQUIPMENT
IN ANY MANNER!**

PREPARATION

BEFORE TOWING WATER TRAILER

 **WARNING: DO NOT OPERATE TRAILER UNTIL THIS MANUAL HAS BEEN READ AND UNDERSTOOD.**

1. Thoroughly read and understand all instructions before operating this trailer.
2. Make sure that the trailer is properly attached to the tow vehicle, including lights, safety chains, hitch and breakaway brake cable.

 **WARNING: RISK OF SERIOUS INJURY! ALWAYS ATTACH THE SAFETY CHAINS AND BREAKAWAY CABLE TO THE TOW VEHICLE.**

3. Check lug bolts for tightness and tires for wear.
4. Adjust hitch height as needed to assure that trailer is level when fully loaded.

 **WARNING: RISK OF DAMAGE AND INJURY! ALWAYS ASSURE THAT THE HITCH IS ATTACHED TO THE PROPER SIZE BALL.**

 **CAUTION: ALWAYS WEAR PROTECTIVE CLOTHING AND GLOVES WHEN WORKING WITH CHEMICALS.**

5. Wear safety goggles, chemical resistant apron and rubber gloves when handling chemicals.
6. Read and understand the chemical manufacturer's safety guidelines on handling, mixing and application.

SAFETY PRECAUTIONS DURING USE

- When possible, avoid operating the tow vehicle near ditches, embankments and holes.
- Reduce speed when turning, crossing slopes and on rough, slick or muddy surfaces.
- Do not permit others to ride.
- Operate tow vehicle smoothly - no jerky turns, starts or stops.
- Hitch only to the hitch points recommended by the tow vehicle manufacturer.
- When tow vehicle is idle, engage brakes and park lock securely.
- Tighten lug bolts before transporting the first time and maintain proper torque.
- Check lights and wiring daily. Service and replace to maintain proper operation.

 **WARNING: RISK OF FALLING COULD CAUSE SERIOUS INJURY OR DEATH! DO NOT ALLOW ANYONE TO RIDE ON TRAILER DURING OPERATION.**

1. Reduce speed when crossing uneven or rough terrain .
2. Always turn off tow vehicle engine before making adjustments or repairs to an attached trailer.

OPERATING INSTRUCTIONS

WATER FLOW

The Mi-T-M Water Trailer features an easy to use discharge manifold that allows the operator three methods of controlling water flow. Water can be discharged through the spray nozzle valve (A), fire hose valve (B), or garden hose valve (C). (figure 1)

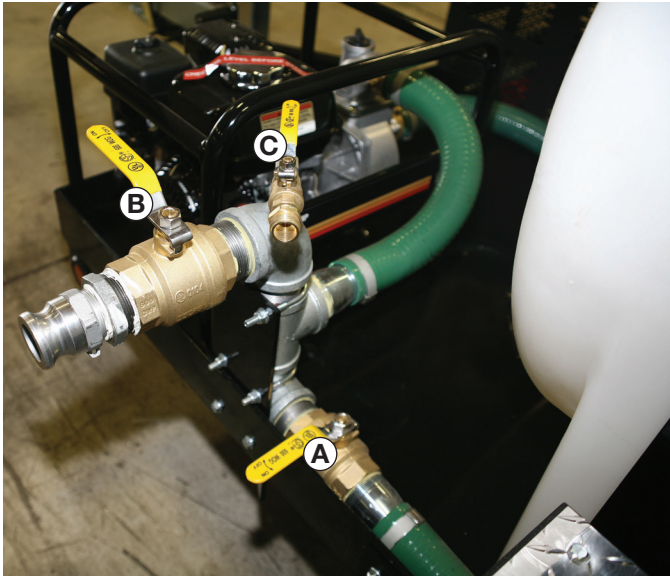


Figure 1

Turning the corresponding valve to the open or closed position will allow the flow of water through each specific valve. If the spray nozzle bar on the back of the trailer is to be used, open spray nozzle valve (A) and close valves (B) and (C).

Follow the same procedure for using the other valves.

When ready to spray, start the engine on the water pump. If this is the first time using the pump, it may be necessary to pour water in the top of the pump to prime it. Once the pump has water in it, it is self-priming. Refer to the pump manual for additional instructions.

When using the fire hose valve, (figure 2) quick couple the fire hose (E) (figure 3) to the valve, open the fire hose valve (B) while closing the other two valves (A) and (C). The red spray nozzle (F) (figure 4) can be threaded to the end of the fire hose and adjusts from wide spray to straight stream by turning the body of the nozzle.

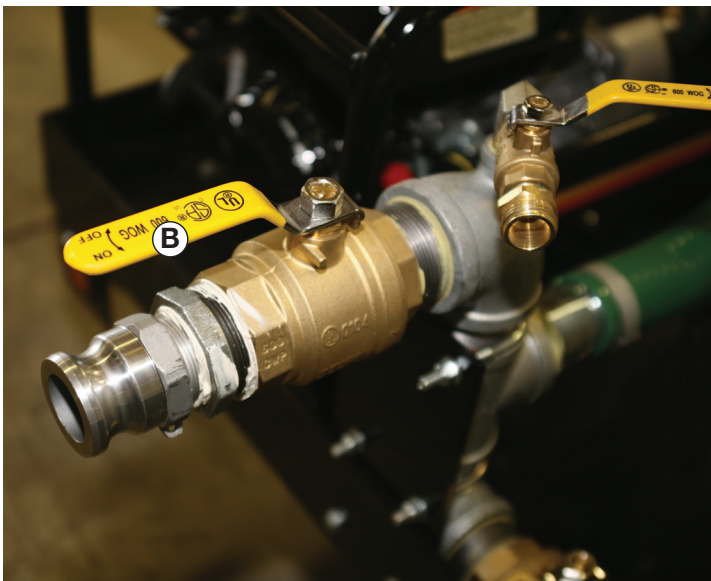


Figure 2

⚠ WARNING: DO NOT DIRECT THE SPRAY FROM THE FIRE HOSE OR PRESSURE HOSE AT ELECTRICAL CONNECTIONS, BOXES OR LINES.

ELECTRICAL SHOCK COULD CAUSE SERIOUS BODILY INJURY OR DEATH.



Figure 3

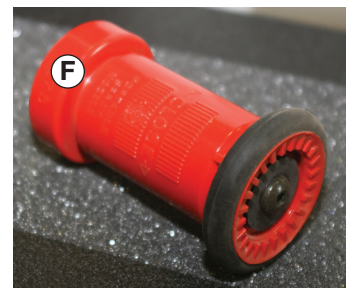


Figure 4

OPERATING INSTRUCTIONS

FILLING THE TANK

To fill the tank through the anti-siphon fill (G) (figure 5), remove the tank lid (figure 6), couple the fill hose (D) (figure 3) to the anti-siphon coupler and the other end of the hose to a fire hydrant. Open the water source and begin filling.



Figure 5



Figure 6

A fire hydrant wrench is provided (H). (Figure 7)



Figure 7

AFTER USE

1. Inspect trailer for wear or damage.
2. Ensure that all fasteners and fittings are tight.
3. Flush tank and pump with fresh water if chemicals are used. Dispose of flush water using appropriate means.

OPERATING INSTRUCTIONS FOR THE HARD SUCTION OPTION

OPTION - HARD SUCTION

WATER FLOW:

The Hard Suction Option for the Mi-T-M Water Trailer features an easy to use discharge Manifold that allows for four methods of controlling water flow (figure 8), and an easy to use inlet manifold allowing for two methods of supplying water (figure 9). Water can be discharged through the spray nozzle bar valve (M), fire hose valve (K), garden hose valve (N), or the tank valve (L). Water can be supplied by the tank valve (J) or from an external body of water using valve (I).

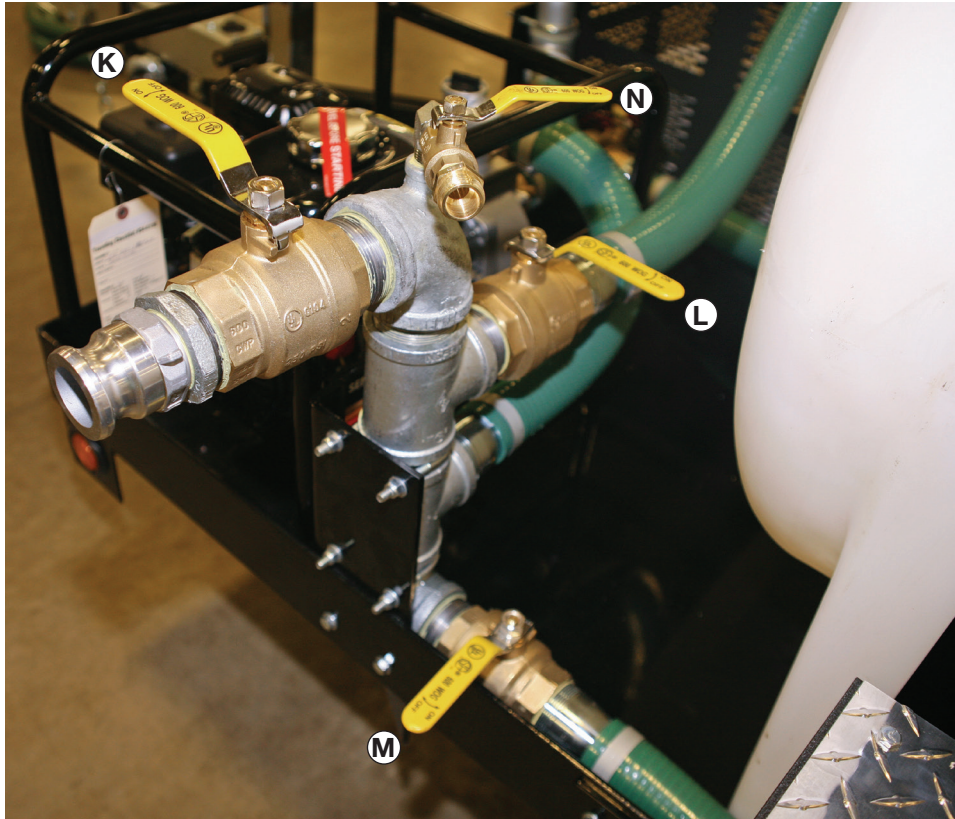


Figure 8

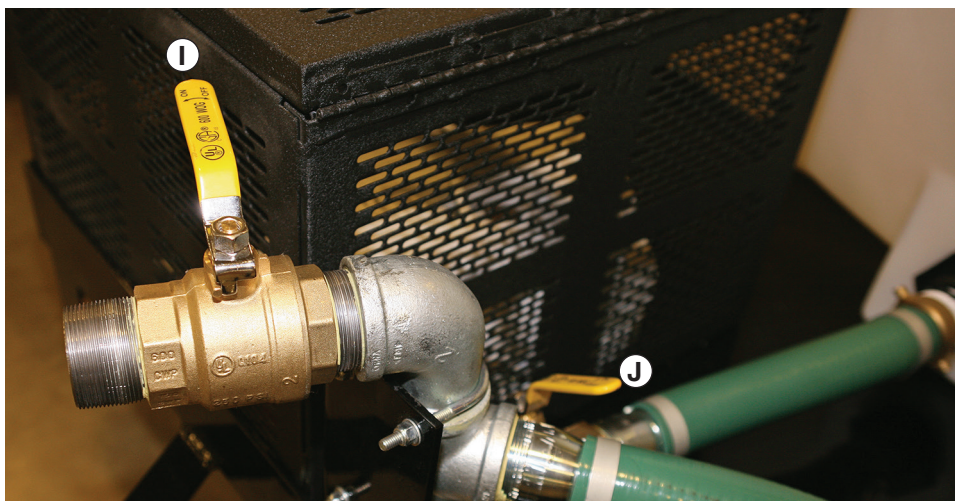


Figure 9

OPERATING INSTRUCTIONS FOR THE HARD SUCTION OPTION

Refer to the pump manual for instructions on pump operation.

Turning the corresponding valve to the open or closed position will allow the flow of water through each valve.

When using the Spray Bar, open valve (M) with valves (K), (L) and (N) closed (figure 10).

To use the fire hose, quick couple the fire hose (E) (figure 3) to valve (K), open valve (K) with valves (L), (M) and (N) closed (figure 11).

To use a garden hose, attach the hose to valve (N), open valve (N) with valves (K), (L) and (M) closed (figure 12).

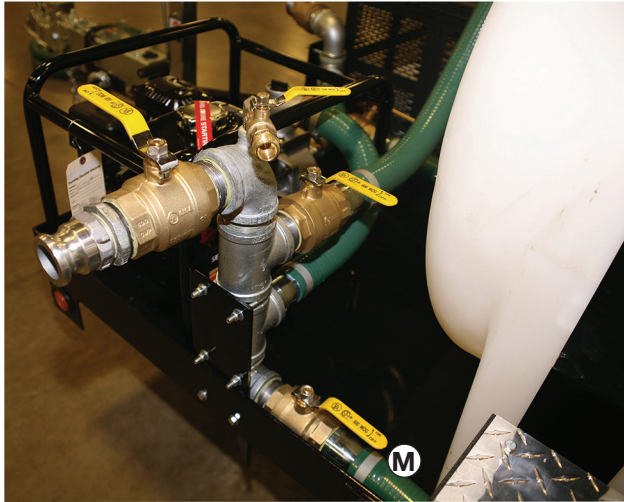


Figure 10

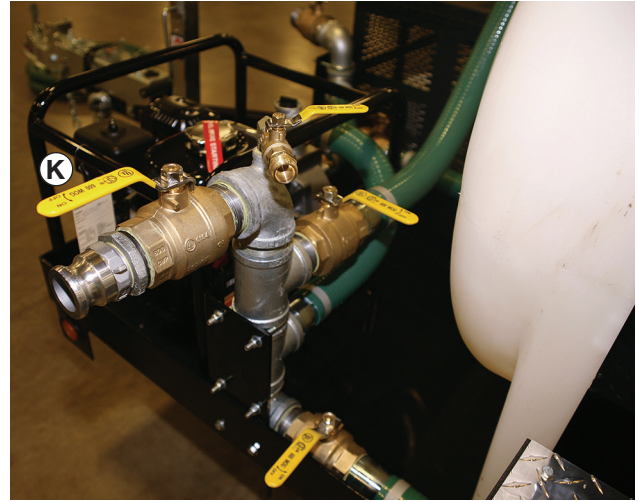


Figure 11

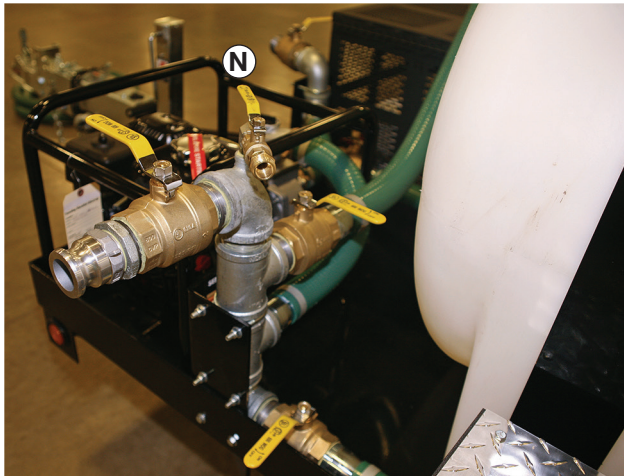


Figure 12

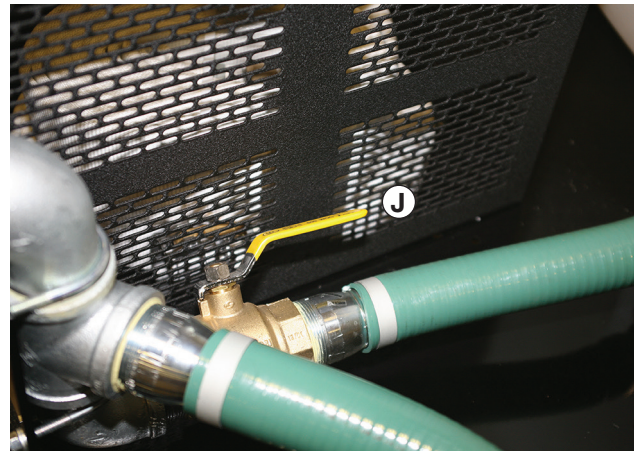


Figure 13

When using water from the tank, open valve (J) with valve (I) closed (figure 13).

When suctioning water from an external body of water, attach strainer (P) to the hard suction hose (O) (figure 14), attach hose (O) to valve (I), put the strainer (P) into the body of water and open valve (I) with valve (J) closed (figure 15).

OPERATING INSTRUCTIONS FOR THE HARD SUCTION OPTION



Figure 14



Figure 15

FILLING THE TANK:

To fill the tank through the anti-siphon (G) (figure 5), follow the instructions above in the trailer manual.

To fill the tank using an external body of water, attach the strainer (P) to the hard suction hose (O) (figure 14), attach hose (O) to valve (I), put the strainer (P) into the body of water, open valve (I) with valve (J) closed (figure 15) and open valve (L) with valves (K), (M) and (N) closed (figure 16).

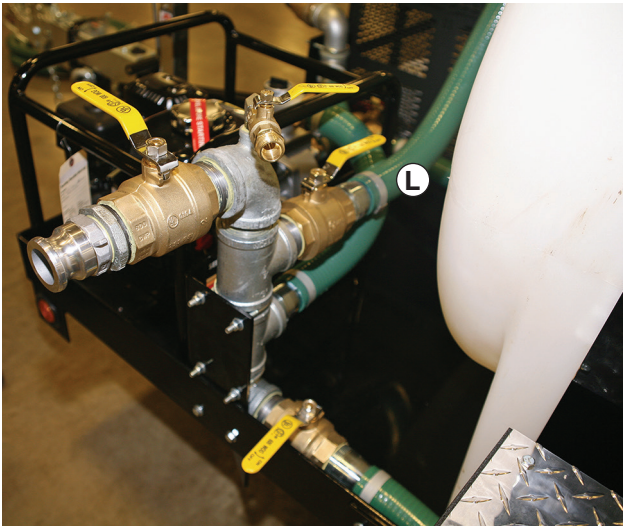


Figure 16

AFTER USE:

Follow instructions above in the trailer manual.



MANUFACTURERS WARRANTY INFORMATION

WATER TRAILER OWNER WARRANTY POLICY

EFFECTIVE DATE: MAY 1, 2010

LIMITED WARRANTY

The Mi-T-M Corporation will repair or replace any part or parts of the water trailer manufactured by Mi-T-M Corporation that are found to be defective in material or workmanship or both, under normal use and maintenance, free of charge for the period specified below. Transportation charges on parts submitted for repair or replacement under this warranty must be borne by the purchaser. For warranty service, locate your nearest Authorized Service Dealer or call 1-800-553-9053 to contact Mi-T-M direct.

For products not manufactured by the Warranter, the Warranter warrants these products to the extent of the warranties of their respective manufacturers.

There is no other expressed warranty, including implied warranties, warranties without limitation, merchantability, performance, or fitness for a particular purpose. Liability for incidental or consequential damages are excluded to the extent exclusion is permitted by law.

Some states or countries do not allow limitations on how long an implied warranty lasts and some states or countries do not allow the exclusion or limitation of incidental or consequential damages, so the above limitation and exclusion may not apply to you. This warranty gives you specific legal rights and you may also have other rights which vary from state to state and country to country.

WARRANTY PERIOD

PRODUCT

WATER TRAILER: 1 YEAR

The warranty period begins on the date of purchase by the first retail consumer or commercial end user and continues for the period stated above in the "Warranty Period".

No warranty registration is necessary to obtain warranty on the Mi-T-M water trailer. Save your proof of purchase receipt. If you do not provide proof of the initial purchase date at the time warranty service is requested, the manufacturing date of the product will be used to determine the warranty period.

EXCLUSIONS

1. This warranty does not cover parts damaged due to normal wear, misapplication or misuse.
2. Failure to follow recommended operating and maintenance procedures will void warranty.
3. The use of other than Genuine Repair Parts will void warranty. Parts returned, prepaid to our factory or to an Authorized Service Center will be inspected and replaced free of charge if found to be defective and subject to warranty.
4. There are no warranties which extend beyond the description of the face hereof. Under no circumstances shall the manufacturer bear any responsibility for the loss of use of the unit, loss of time or rental, inconvenience, commercial loss or consequential damages.

If you have any questions regarding your warranty rights and responsibilities you should contact:

Mi-T-M Corporation
8650 Enterprise Drive
Peosta, IA 52068
1-800-553-9053
www.mitm.com

Manufactured by Mi-T-M
8650 Enterprise Drive, Peosta IA 52068
563-556-7484/ Fax 563-556-1235